

Chapter 7.0

APPENDICES

Appendix 7.1: Figures

Appendix 7.2: Field Survey Sheets

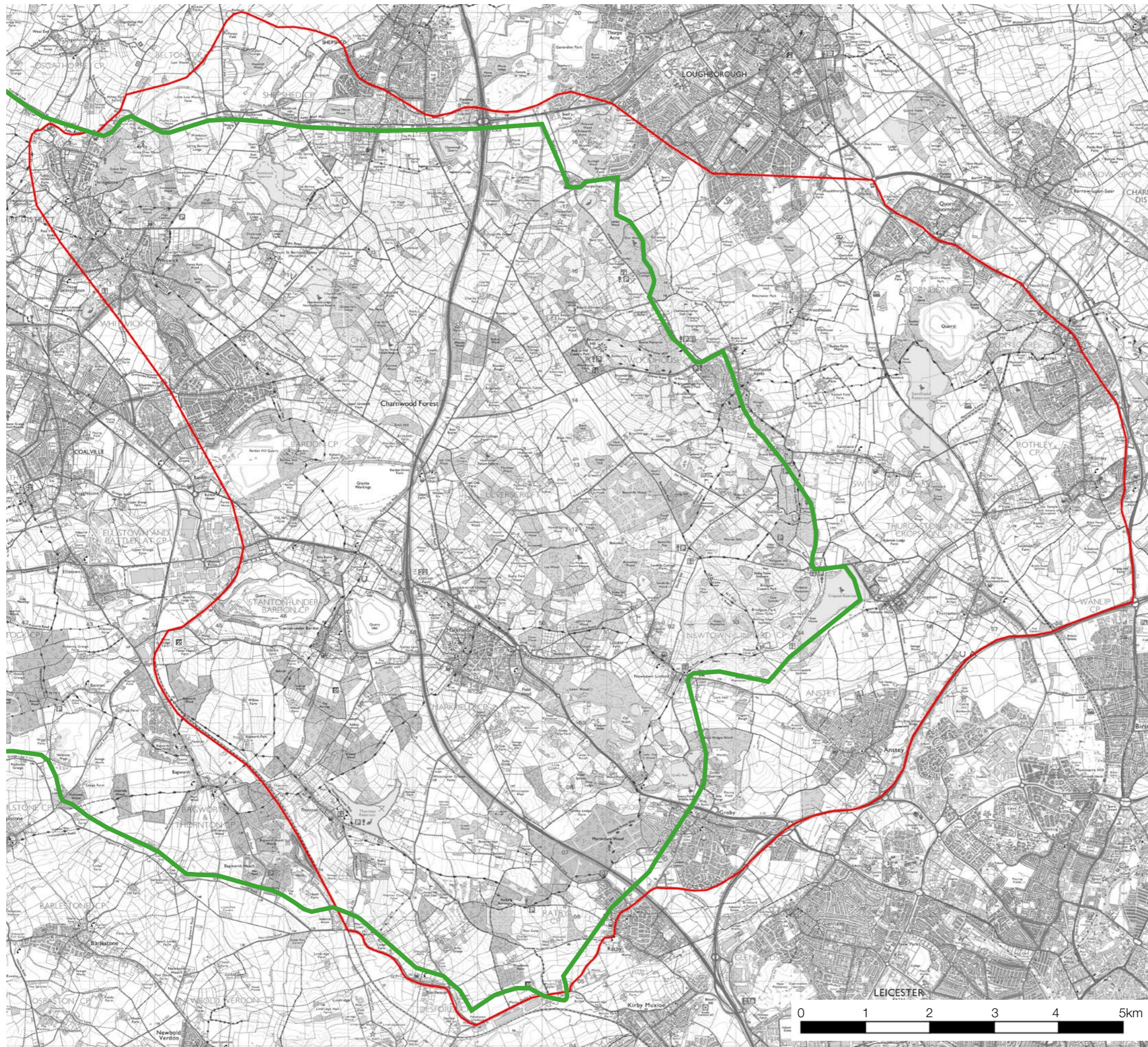
Appendix 7.3: Consultation Feedback



Appendix 7.1

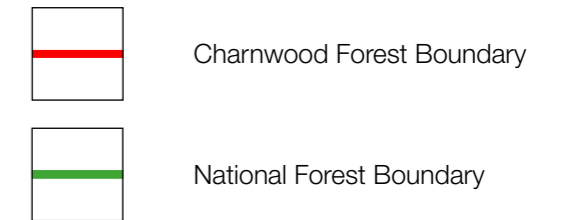
FIGURES





This drawing is the property of FPCR Environment and Design Ltd and is issued on the condition it is not reproduced, retained or disclosed to any unauthorised person, either wholly or in part without written consent of FPCR Environment and Design Ltd.

All mapping and data provided by The National Forest Company.



client
Charnwood Forest Regional Park Partnership

project
Charnwood Forest
Landscape Character Assessment

drawing title
CHARNWOOD FOREST BOUNDARY

scale
NTS @ A3

drawn
DB/MST

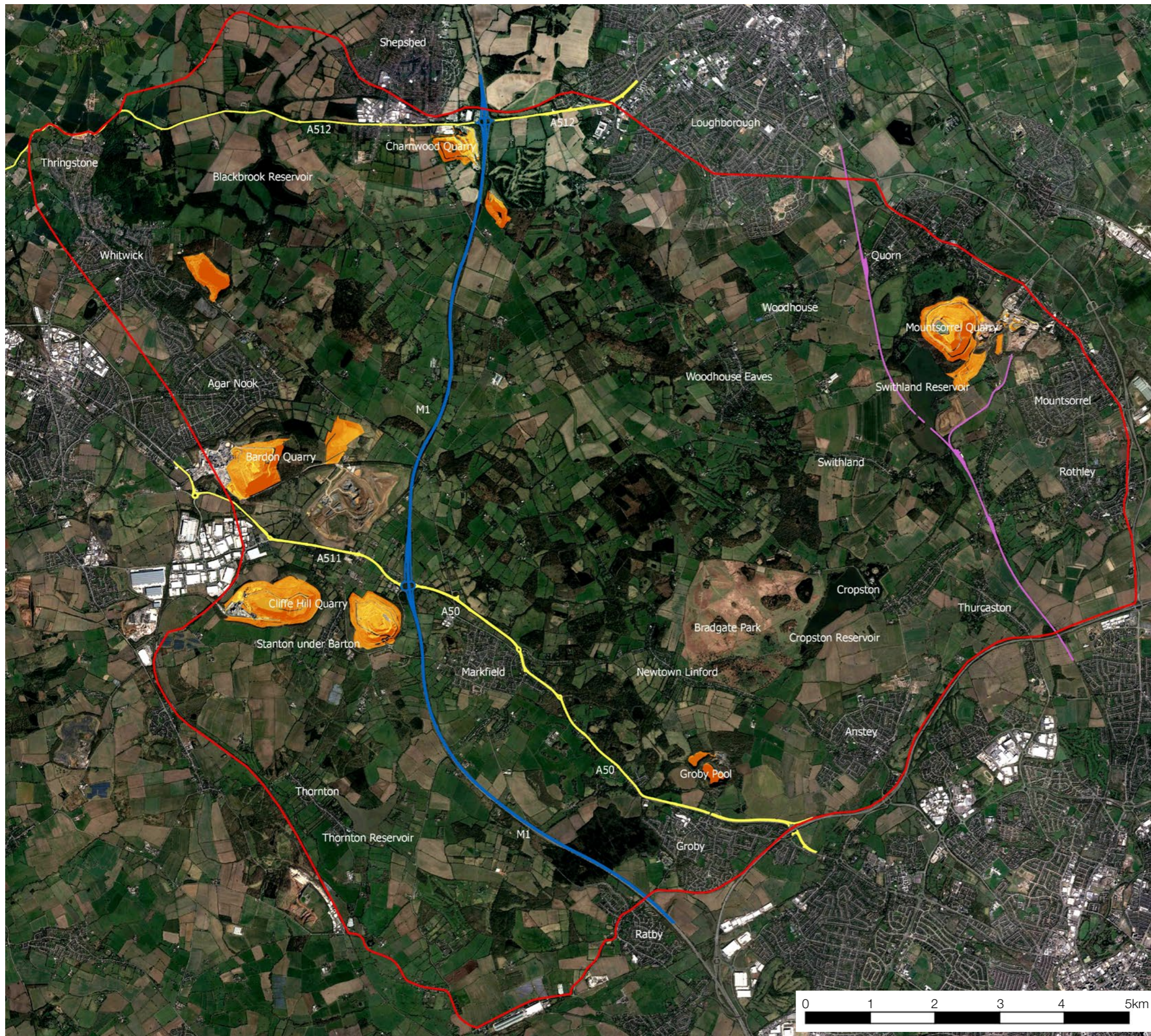
issue date
June 2019



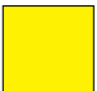

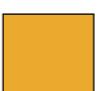
rev
-

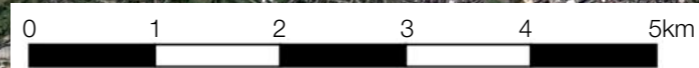
Figure 1

This drawing is the property of FPCR Environment and Design Ltd and is issued on the condition it is not reproduced, retained or disclosed to any unauthorised person, either wholly or in part without written consent of FPCR Environment and Design Ltd.

All mapping and data provided by The National Forest Company.



-  Charnwood Forest Boundary
-  M1
-  Main Road
-  Great Central Railway
-  Quarry



client
Charnwood Forest Regional Park Partnership

project
Charnwood Forest
Landscape Character Assessment

drawing title
AERIAL PHOTOGRAPH

scale
NTS @ A3

drawn
DB/MST

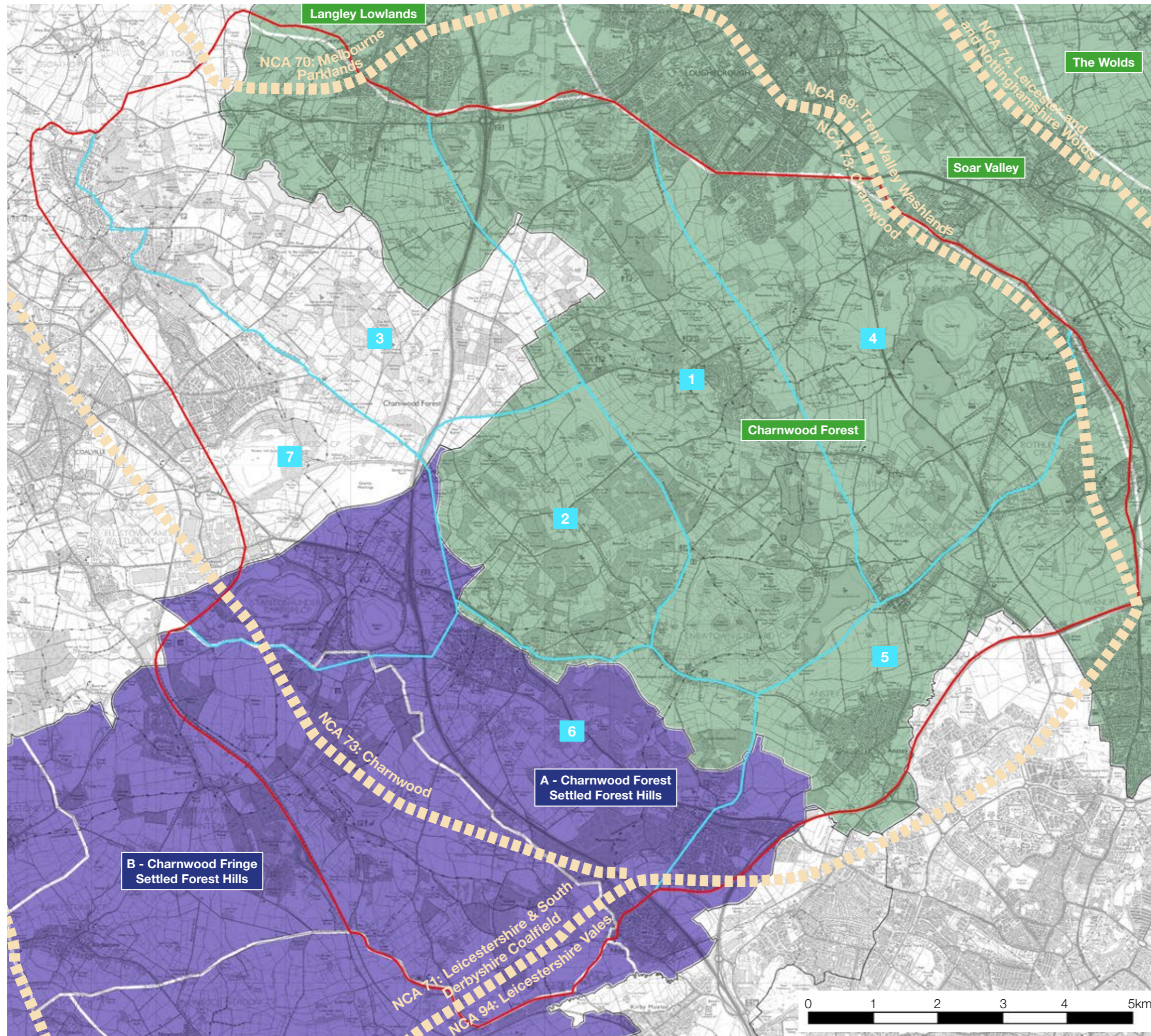
issue date
June 2019




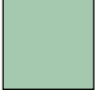
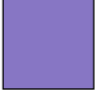

rev
-

Figure 2

This drawing is the property of FPCR Environment and Design Ltd and is issued on the condition it is not reproduced, retained or disclosed to any unauthorised person, either wholly or in part without written consent of FPCR Environment and Design Ltd.

All mapping and data provided by The National Forest Company.



-  Charnwood Forest Boundary
-  National Character Area (NCA)
-  District Boundary
-  Great Central Railway Charnwood Borough Council Landscape Character Areas
-  Hinckley and Bosworth Landscape Character Areas
-  2008 Charnwood Forest Character Areas
 - 1 - Bradgate and Beacon
 - 2 - Ulverscroft
 - 3 - Charley
 - 4 - Swithland
 - 5 - Rothley Brook
 - 6 - Thornton and Markfield
 - 7 - Bardon

client
Charnwood Forest Regional Park Partnership

project
Charnwood Forest
Landscape Character Assessment

drawing title
EXISTING LANDSCAPE CHARACTER AREAS

scale
NTS @ A3

drawn
DB/MST

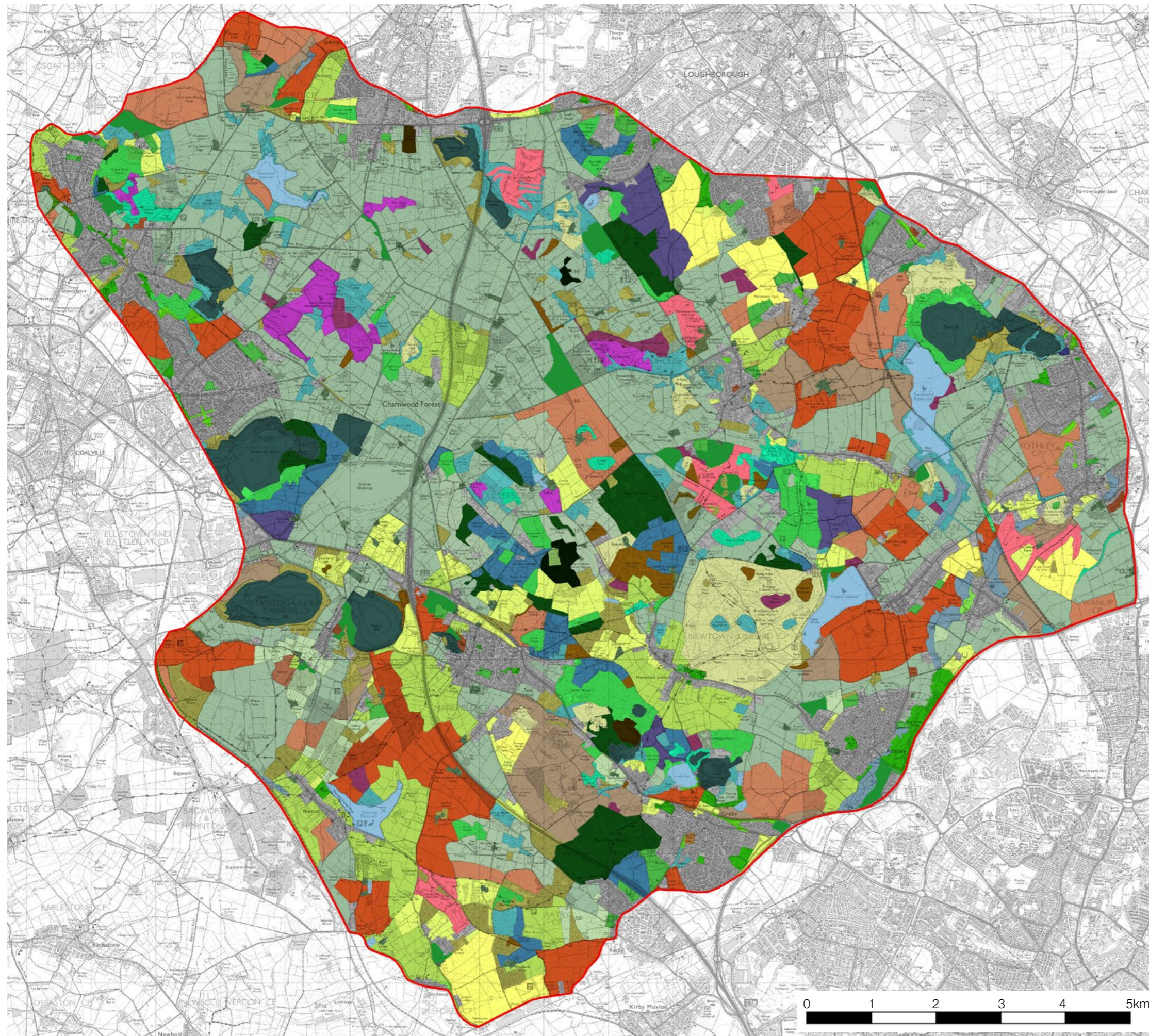
issue date
June 2019

rev
-

Figure 3

This drawing is the property of FPCR Environment and Design Ltd and is issued on the condition it is not reproduced, retained or disclosed to any unauthorised person, either wholly or in part without written consent of FPCR Environment and Design Ltd.

All mapping and data provided by The National Forest Company.



client
Charwood Forest Regional Park Partnership

project
Charwood Forest
Landscape Character Assessment


drawing title
LEICESTERSHIRE, LEICESTER AND RUTLAND
HISTORIC LANDSCAPE CHARACTERISATION

scale
NTS @ A3

drawn
DB/MST

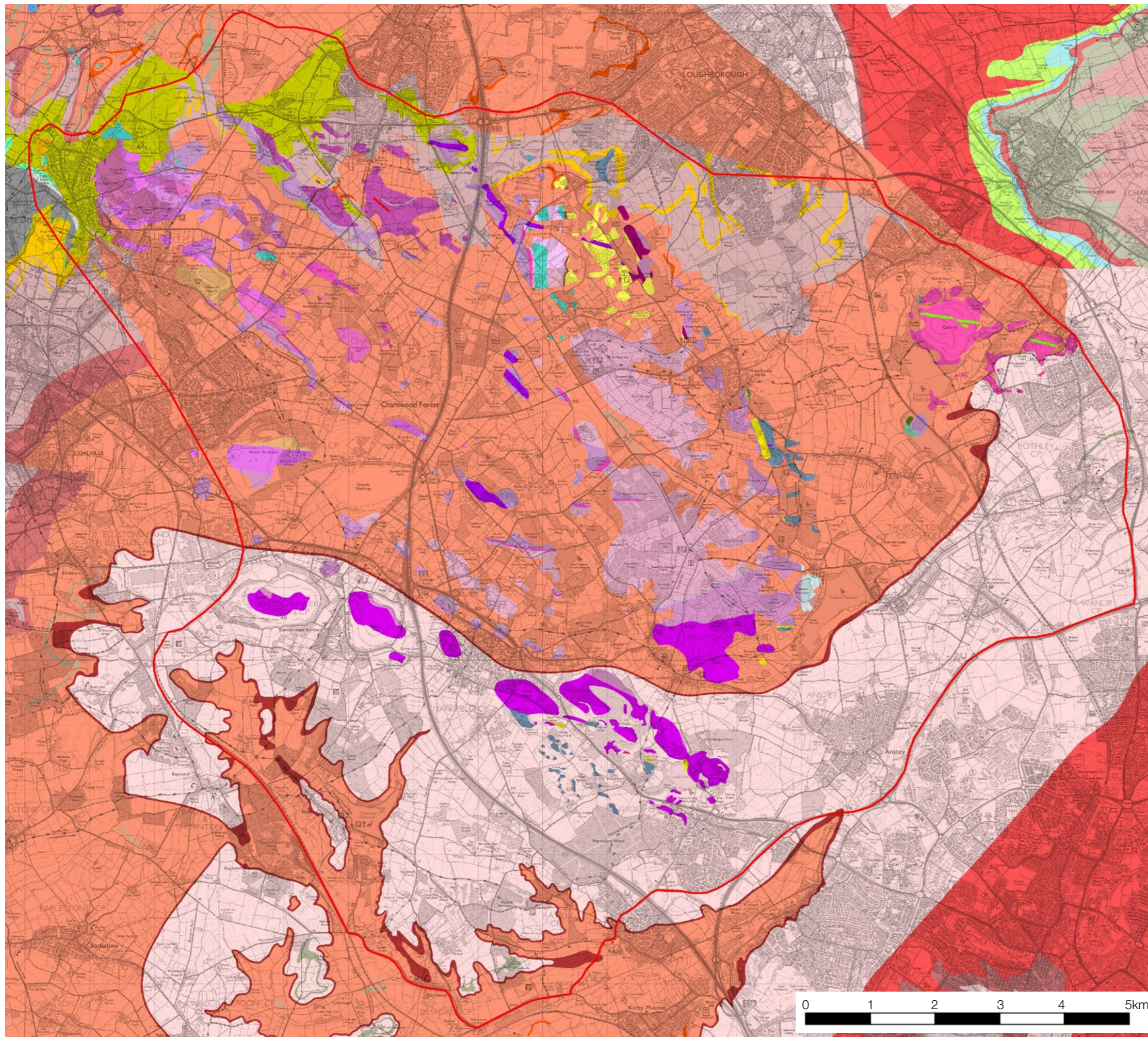
issue date
June 2019

rev

 **Figure 4**

This drawing is the property of FPCR Environment and Design Ltd and is issued on the condition it is not reproduced, retained or disclosed to any unauthorised person, either wholly or in part without written consent of FPCR Environment and Design Ltd.

All mapping and data provided by The National Forest Company.



- Charwood Forest Boundary
- | | |
|--|--|
| Barnstone Member - Mudstone and Limestone, interbedded | Stable Pit Member - Sandstone |
| Cotham Member - Mudstone | Beacon Tuff Member - Tuff, Dacitic |
| Scunthorpe Mudstone Formation - Mudstone | Beacon Tuff Member - Tuff |
| Westbury Formation - Mudstone | Beacon Tuff Member - Volcanic Rocks (both Pyroclastic and Reworked Volcanic Rocks) |
| Wilmcote Limestone Member - Mudstone and Limestone, interbedded | Bardon Breccia - Andestic - Rock |
| Blue Anchor Formation - Mudstone | Blackbrook Reservoir Formation - Volcaniclastic - Breccia |
| Branscombe Mudstone Formation - Mudstone | Blackbrook Reservoir Formation - Volcaniclastic - Sandstone |
| Arden Sandstone Formation - Sandstone | Blackbrook Reservoir Formation - Volcaniclastic Rocks (both Pyroclastic and Reworked Volcanic Rocks) |
| Cotgrave Sandstone Member - Sandstone | Hanging Rocks Formation - Conglomerate |
| Edwalton Member - Siltstone, Dolomitic | Benscliffe Breccia Member - Volcaniclastic - Breccia |
| Edwalton Member - Mudstone | Bucks Hill Member - Tuffaceous - Mudstone |
| Edwalton Member - Sandstone | Bucks Hill Member - Tuffaceous - Sandstone |
| Gunthorpe Member - Siltstone, Dolomitic | Beacon Hill Formation - Tuff, Dacitic |
| Gunthorpe Member - Mudstone | Beacon Hill Formation - Volcaniclastic - Breccia |
| Gunthorpe Member - Sandstone | Beacon Hill Formation - Volcaniclastic - Siltstone |
| Helsby Sandstone Formation - Mudstone | Bradgate Formation - Metavolcaniclastic - Igneous - Rock |
| Helsby Sandstone Formation - Sandstone | Bradgate Formation - Volcaniclastic - Siltstone |
| Radcliffe Member - Mudstone and Siltstone | Charwood Lodge Volcanic Formation - Pyroclastic - Breccia |
| Radcliffe Member - Mudstone | Charwood Lodge Volcanic Formation - Volcaniclastic - Breccia |
| Shepshed Sandstone Member - Sandstone | Park Breccia - Volcaniclastic - Breccia |
| Tarpoley Siltstone Formation - Sandstone | Sliding Breccia Member - Volcaniclastic - Breccia |
| Tarpoley Siltstone Formation - Siltstone, Mudstone and Sandstone | Cademan Volcanic Breccia Member - Pyroclastic - Breccia |
| Mercia Mudstone Group - Mudstone | Grimley Andesite - Andesite |
| Pennine Middle Coal Measures Formation - Mudstone, Siltstone and Sandstone | Ives Head Formation - Tuffaceous - Sandstone |
| Pennine Middle Coal Measures Formation - Sandstone | Ives Head Formation - Volcaniclastic - Breccia |
| Pennine Lower Coal Measures Formation - Mudstone, Siltstone and Sandstone | Ives Head Formation - Volcaniclastic - Sandstone |
| Ashover Grit - Sandstone | Kite Hill Tuff Member - Pyroclastic - Breccia |
| Morrige Formation - Mudstone, Siltstone and Sandstone | North Charwood Diorite - Diorite |
| Unnamed Dyke, Carboniferous - Basalt and Microgabbro | Outwoods Breccia Member - Volcaniclastic - Breccia |
| Mountsorrel Complex - Diorite | Peldar Dacite Breccia - Volcaniclastic - Breccia |
| Mountsorrel Complex - Gabbro | Peldar Porphyritic Dacite - Dacite |
| Mountsorrel Complex - Granodiorite | St Bernard Tuff Member - Volcaniclastic Rocks (both Pyroclastic and Reworked Volcanic Rocks) |
| South Leicestershire Diorite Complex - Diorite | South Charwood Diorites - Diorites |
| Lubcloud Microgranite - Microgranite | Sandhills Lodge Member - Tuffaceous - Sandstone |
| Swthland Camp Member - Conglomerate | South Quarry Breccia Member - Volcaniclastic - Breccia |
| Stockingford Shale Group - Mudstone | Swannymote Breccia Member - Volcaniclastic - Breccia |
| Swthland Formation - Mudstone | Sharpley Porphyritic Dacite - Dacite |

client
Charwood Forest Regional Park Partnership

project
Charwood Forest
Landscape Character Assessment

drawing title
GEOLOGY

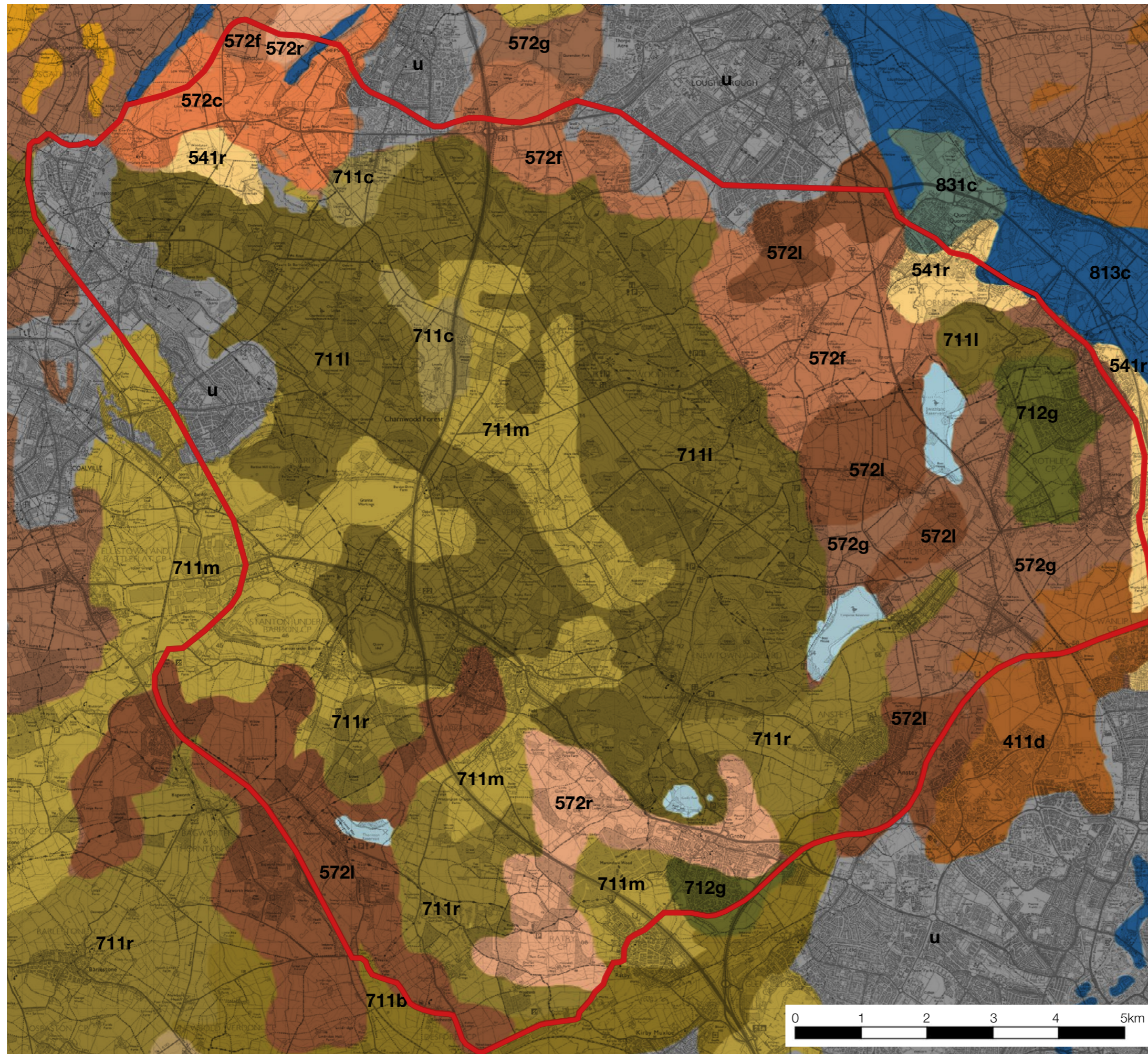
scale
NTS @ A3

drawn
DB/MST

issue date
June 2019

rev
-

Figure 5



This drawing is the property of FPCR Environment and Design Ltd and is issued on the condition it is not reproduced, retained or disclosed to any unauthorised person, either wholly or in part without written consent of FPCR Environment and Design Ltd.

All mapping and data provided by The National Forest Company.

-  Charnwood Forest Boundary
-  411d *Deep Clay - Slowly permeable calcareous clayey soils.*
-  541r *Deep Loam - Deep, well-drained, coarse loamy and sandy soils, locally over gravel.*
-  572f *Deep red Loam to Clay - Reddish mudstone fine loamy or fine silty over clayey soils with slowly permeable subsoils and slight seasonal waterlogging.*
-  572g *Deep red Loam to Clay - Reddish coarse and fine loamy over clayey soils with slowly permeable subsoils and slight seasonal waterlogging.*
-  572l *Deep Red Loam - Reddish fine loamy over clayey soils with slowly permeable subsoils and slight seasonal waterlogging.*
-  572c *Silty over Red Shale - Reddish fine loamy over clayey soils with slowly permeable subsoils and slight seasonal waterlogging.*
-  711b *Seasonally wet loam to clayey over red shale - Slowly permeable seasonally waterlogged reddish fine loamy over clayey soils.*
-  711c *Seasonally wet loam to clayey over red shale - Slowly permeable seasonally waterlogged reddish fine loamy over clayey and clayey soils.*
-  711l *Seasonally wet red loam over hard rock - Slowly permeable seasonally waterlogged reddish coarse and fine loamy soils.*
-  711m *Seasonally wet deep red loam to clay - Slowly permeable seasonally waterlogged reddish fine loamy over clayey, fine loamy and clayey soils.*
-  711r *Seasonally wet deep loam to clay - Slowly permeable seasonally waterlogged fine loamy over clayey soils.*
-  712g *Seasonally wet deep clay - Slowly permeable seasonally waterlogged clayey and fine loamy over clayey soils.*
-  813c *Seasonally wet deep clay - Stoneless clayey soils variably affected by groundwater some with sandy subsoils.*
-  831c *Seasonally wet deep loam - Permeable fine and coarse loamy soils variably affected by groundwater, the drier soils being on slightly raised sites*

client
Charnwood Forest Regional Park Partnership

project
Charnwood Forest
Landscape Character Assessment


drawing title
SOILS

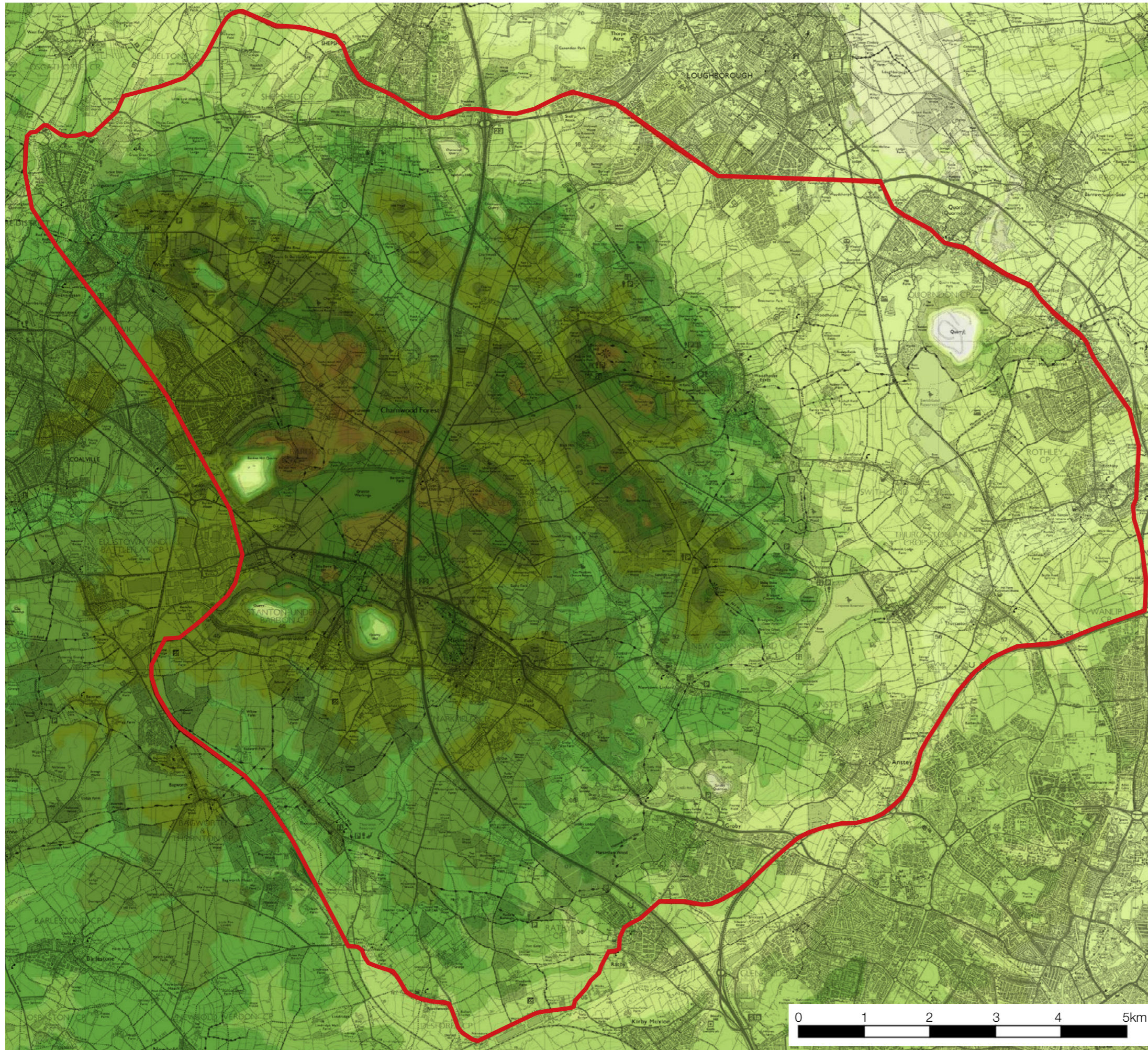
scale
NTS @ A3

drawn
DB/MST

issue date
June 2019

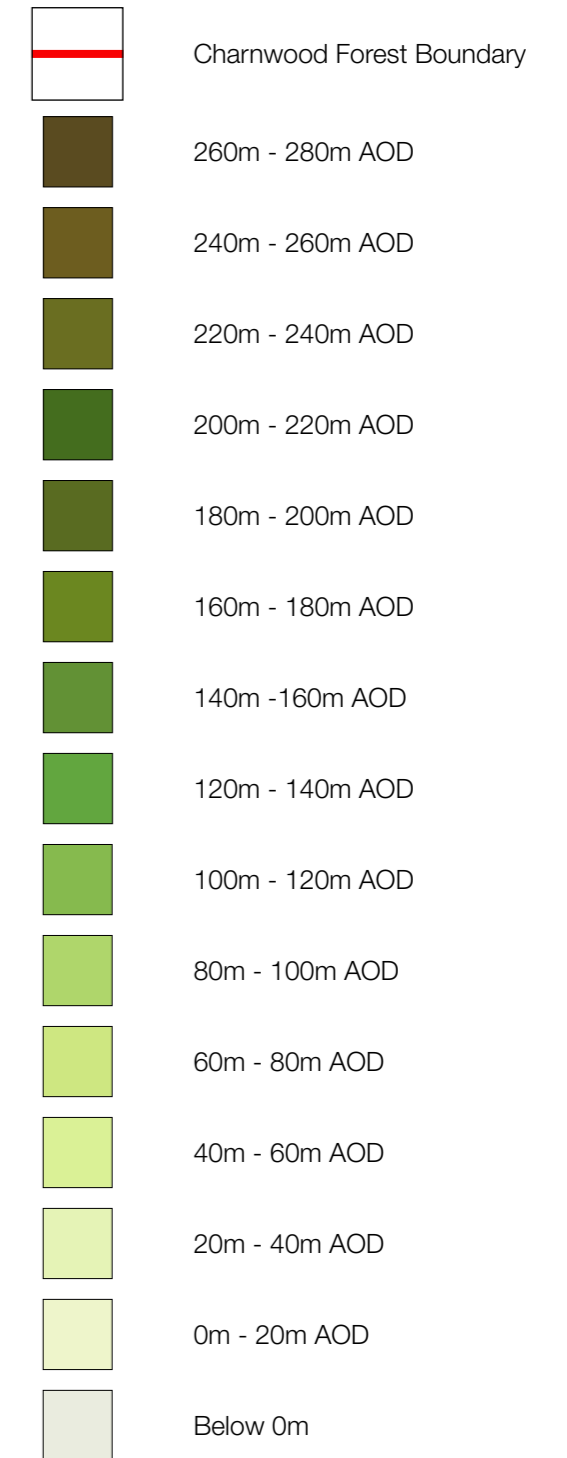
rev
-

 **Figure 6**



This drawing is the property of FPCR Environment and Design Ltd and is issued on the condition it is not reproduced, retained or disclosed to any unauthorised person, either wholly or in part without written consent of FPCR Environment and Design Ltd.

All mapping and data provided by The National Forest Company.



client
Charnwood Forest Regional Park Partnership

project
Charnwood Forest
Landscape Character Assessment

drawing title
TOPOGRAPHY

scale
NTS @ A3

drawn
DB/MST

issue date
June 2019

rev
-

Figure 7