



# Charnwood

## COCKROACHES

### APPEARANCE

Cockroaches range in size from 10-23mm in length, they have two pairs of wings and long whip-like antennae. The two most commonly encountered species are the Oriental cockroach (*Blatta Orientalis*) and the German cockroach (*Blattella Germanica*).

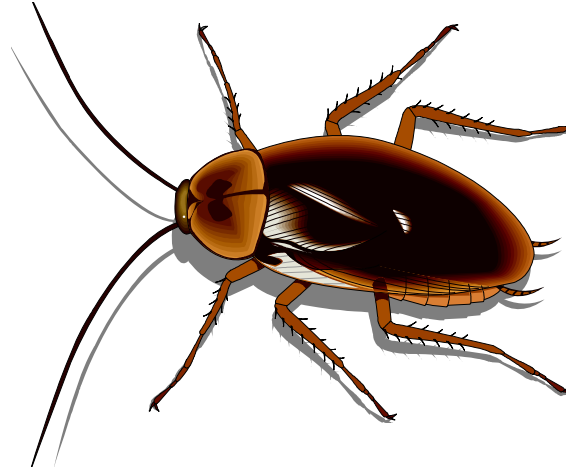
The Oriental cockroach can easily be distinguished from the German by its larger size and darker colour. The Oriental is also unable to climb smooth vertical surfaces.

### LIFE CYCLE

The female Oriental cockroach lays egg cases containing up to fifteen eggs which develop for six weeks before emerging to undertake up to ten nymphal changes to reach maturity. The female German cockroach however carries her egg case with her containing up to 30 young until just before they hatch when they undertake up to seven nymphal stages to reach maturity. Adult females of both species may live for up to six months but males are shorter lived.

### FEEDING HABITS

Both species feed mainly at night when all is dark and quiet, the Oriental



preferring cooler temperatures and hiding places with rough vertical surfaces, such as cellar ducting or the cooler parts of a kitchen area, sewers and occasionally outside in yards. The German cockroach prefers warm moist conditions and can climb most surfaces to hide in any small dark cracks and crevices.

Any organic substances may be consumed in the diet be it from the floor, work surface or drains. It is this movement between dustbin areas drains and work surfaces which allows the cockroach to transmit food poisoning micro organisms into the human food chain as well as it regurgitating partially digested food onto the chosen meal before consumption to aid the break down of the substance. This, combined with the continual defecation while walking on food preparation areas and ingredients make this a significant public health pest.

### SIGNS OF INFESTATION

Specks or lines of faeces can be seen in any unclean area although these are not apparent to the untrained eye. Also discarded egg cases and dead specimens may be noticed. Any sudden exposure to a darkened room may lead to visual sightings.

## **CONTROL**

Complete control is difficult to achieve even by professionally trained Pest Control Technicians and great emphasis must be placed on cleanliness to complement any insecticidal treatment. Also difficulty may be encountered in treatments with water based insecticides as cleaning often removes these products.

Further information and advice can be obtained from the Pest Control Service in the Environmental Health Division.

The treatment of cockroaches in an individual domestic premises is free of charge. However charging will apply where a block treatment is required. Please ask for a quote.

If you would like an explanation of this fact sheet in your language or to obtain copies in Braille, on audio tape or large print please contact 01509 634560.

For further information contact:

Pest Control Service  
Environmental Health Services  
Southfields  
Southfield Road  
Loughborough  
Leics LE11 2TX  
Tel: 01509 634628