

C O N T E N T S P A G E

Charnwood Community Survey

October 2002

Page Number

A	Aims and Objectives of research	2
B	Research Methodology	3
C	Analysis of Results	4
D	Summary of Main Findings	7

Survey Findings

1.0	Victims of Crime	15
2.0	Someone close been a victim of crime	21
3.0	Feeling Safe	25
4.0	Feeling Afraid	31
5.0	Closed Circuit Television (CCTV)	38

Appendix 1 - Copy Questionnaire - Marked up with Top Line Findings

Appendix 2 - Tables of Results

Appendix 3 - Responses to open Questions

A. AIMS AND OBJECTIVES OF RESEARCH

A.1 The overall aim of the research was to gather information which would give Charnwood Borough Council and the Charnwood Community Safety Partnership a better understanding of residents' views on 'Fear of Crime'. The Partnership recognises that 'Fear of Crime' plays a significant role in peoples' lives.

A.2 The research to which this report refers was commissioned to assist the Partnership in finding out the cause of this fear to develop ways of reducing it. Residents of the Borough who had agreed to be members of the Charnwood Borough Council Citizens' Panel received copies of the questionnaire by post.

A.3 The questions in the questionnaire covered the following issues:

- Whether respondents had been a victim of crime, which crimes they had been a victim of, (if applicable), when this had taken place and when the crimes had occurred.
- The same set of questions were asked relating to people respondents considered to be 'close to them', (e.g. relatives, neighbours and friends)
- How safe respondents felt in given situations
- Whether the fear of crime stopped them from doing things
- What, in their opinion were responsible for making people feel afraid and what made people feel safe.
- Locations for, effectiveness and functions of CCTV

B. RESEARCH METHODOLOGY

- B.1 Self-completion questionnaires were sent to 1740 residents of the Borough who had previously agreed to help the Council with research. Some people had been recruited via Community Surveys undertaken in all individual wards of the Borough between August 1998 and November 1999, and some who had been recruited via the BVPI General Survey of Residents which had taken place during October/November 2000. NOTE: 8 respondents no longer lived at the address, had died or were otherwise now unable to complete the questionnaire giving a valid sample of 1732.
- B.2 Questionnaires were posted, using Royal Mail, on 1st October 2002. Respondents were asked to return the questionnaire to NWA as soon as possible, in the free-post addressed envelope provided.
- B.3 A total of 1,005 respondents, (of whom 17 were additional recruits), returned completed postal questionnaires, giving an overall response rate to the initial survey of 57%.

C ANALYSIS OF RESULTS

C.1 Data was analysed using SPSS (Statistical Package for the Social Sciences). The respondents were not representative of the population of the Borough in respect of home location/area nor in respect of age. Weightings were applied to ensure the survey results were based on a sample which was representative of the Borough population in terms of area and age.

C.2 Weightings were calculated first of all for 'area', then for 'age', and the total weighting applied for each case was the 'area weighting' multiplied by the 'age weighting'. Details of the weightings applied, along with population statistics, and profiles of achieved samples, are shown in the following table. (A number of respondents did not identify their age or ward/area. These have been weighted as '1' in order to include them in the analysis).

	<i>population</i>	<i>achieved</i>	<i>weight</i>
<i>loughborough</i>	315	327	0.96293578
<i>shepshed</i>	135	91	1.482951334
<i>forest</i>	73	114	0.641203008
<i>soar valley</i>	180	113	1.592313527
<i>wolds</i>	37	122	0.299578454
<i>south charnwood</i>	245	217	1.127162607
<i>under25</i>	138	26	5.0498011
<i>25 to 44</i>	369	188	1.867431611
<i>45 to 64</i>	334	512	0.620658482
<i>65 & over</i>	209	273	0.728383046

C.3 In respect of the achieved sample, (unweighted), 46.7% of respondents were male, 52.3% female. 13.7% of all respondents said that they had a long term illness or disability.

C.4 The large majority of respondents (97.4%) were white British, (94.8%), white Irish, (0.6%), or white other (2%). Only 1.8% were from a Black or Minority Ethnic group. This number is too small for any statistical validity for separate analysis to be implied.

C.5 Tables were produced from the weighted data, (shown as appendix 2), showing total 'unweighted counts' and 'weighted percentages'. The tables, show results for the overall sample, and for the following sub-groups :

AREA

Loughborough:
 (Hastings, Lemyngton, Storer, Southfields, Woodthorpe, Outwoods, Nanpantan, Garendon and Ashby)

Shepshed & Hathern
 (Shepshed; East and West, and Hathern)

Forest
 (Woodhouse & Swithland, Bradgate and Thurcaston)

Soar Valley
 (Barrow upon Soar and Quorndon, Mountsorrel and Rothley and Sileby)

The Wolds
 (The Wolds and Six Hills)

South Charnwood
 (East Goscote, Queniborough, Syston, Thurmaston, Birstall)

<u>GENDER</u>	Male & Female	
<u>AGE GROUP</u>	Under 25 years	25 to 44 years
	45 to 64 years	65 years & over

C.6 All survey results are subject to a 'margin of error' (sampling error) : this is dependent on both the sample number and the % giving a particular response. The table below gives an indication of the potential sampling error (at the 95% Confidence Level), for a selection of sample numbers and responses.

C.7 (Note : calculations of sampling error are based on the premise of a randomly selected sample, and whilst a random selection of residents were invited to participate in the initial recruitment research not everyone accepted. The responses in the survey must therefore be looked at as indications of the 'responses' likely to have been received from the total population if they had all been asked, rather than the overall population opinion.)

Confidence Intervals

	100	150	250	500	1000
	\pm %	\pm %	\pm %	\pm %	\pm %
50	9.8	8.1	6.2	4.4	3.1
40 or 60	9.6	8.0	6.1	4.2	3.0
30 or 70	9.0	7.5	5.7	4.0	3.4
20 or 80	7.8	6.5	5.0	3.5	2.5
10 or 90	5.9	4.9	3.8	2.6	1.9

D. SUMMARY OF MAIN FINDINGS

- D1 In recognition that 'fear of crime' plays a significant role in peoples lives, Charnwood Borough Council and the Charnwood Community Safety Partnership commissioned this survey of the Citizens' Panel in order to gain a better understanding of residents' views on 'Fear of Crime'.
- D2 Self-completion questionnaires were sent to 1732 residents of the Borough who had previously agreed to help the Council with research. A total of 1,005 respondents, (of whom 17 were additional recruits), returned completed postal questionnaires, giving an overall response rate to the initial survey of 57%. The respondents were not fully representative of the profile of the Borough and therefore weighting was applied at the analysis stage.

Victims of Crime?

- D3 Less than one third of all respondents said that they had not been a victim of crime, (32.4%). Men were slightly less likely, (28.6%), than women, (35.8%), to consider that they had NOT been a victim of crime.
- D4 When asked which crimes they had been victims of the 685 people who said that they had been a victim noted 1613 responses: 2.35 for each person who had been a victim. Respondents were most likely to say that they had been a victim of damage to their cars, (34.1% of the overall sample); had property stolen from their car, 27.8% of the overall sample); and/or had a theft of property from their homes, (25.8%).

- D5 Respondents who said that they had been a victim of the crimes listed in the questionnaire were asked, for each of the crimes they had mentioned, approximately how long ago this crime had occurred and whether or not it had taken place in the Borough of Charnwood.
- D6 Only in the cases of damage to their cars, (27.2%); and damage to their homes, (25.5%), did more than a quarter of those who had reported the crime say that it had taken place in the last 12 months. Less than 10% of those who said that they had been a victim of a break in at their home, (9.2%); car theft, (8.8%); and street robbery, (6.8%); said that it had taken place in the last year.
- D7 Over two thirds of all crimes mentioned had occurred in the Borough of Charnwood with the exception of theft of property from cars, (61.9%); car theft, (60.5%); pick pocketing, (33.5%); and street robbery, (30.8%).
- D8 As may have been expected over three quarters of respondents who had been victims of theft of property from their homes, (77.1%); a break in at their homes, (76.2%); damage to their homes, (80.4%), said that this had taken place in the Borough of Charnwood. Those where this was not the case presumably had moved house since the crimes had occurred.
- D9 Whereas the minority, (32.4%), of respondents said that they had been a victim of crime, the large majority, (76.1%), said that someone close to them, (a relative, a neighbour or a close friend), had been a victim of crime. Respondents were MOST likely to report that someone close to them had had a break in at their home, (41.3%). Indeed twice as many respondents said that they had someone close to them who had suffered this than had themselves been victims, (20.7% of respondents said that they had themselves had been a victim of a break in at home).

- D10 Similarly, slightly more respondents said that they had someone close to them who had suffered from a theft of property from their home, (36.3% - someone close, 25.8% - self). (This also occurs relating to racial abuse, domestic violence, street robbery and violence against the person).
- D11 Rather fewer respondents reported that someone close to them had been a victim of a car related crime than had reported that it had happened to themselves. (Car damage - someone close - 27.7%, self - 34.1%; theft of property from the car - someone close - 23%, self - 27.8%; car theft - someone close - 14.9%, self - 18.1%).
- D12 The crimes of a break in at their homes, (22.9%); and theft of property from their homes, (28.7%); were least likely to have happened to someone close to respondents within the last year and street robbery, (26.9%); and pick pocketing, (26.7%), least likely to have occurred.

Feeling Safe

- D13 The large majority of respondents said that they felt either 'very safe', (41.6%), or 'safe', (52%), in their own homes. (93.6% felt safe). 3.6% of respondents said that they felt 'unsafe', with a further 0.4% saying that they felt 'very unsafe'. (2.3% did not answer this question and 0.1% said that the question was 'not applicable').
- D14 Nearly one in ten respondents, (9%), said that they felt either 'unsafe', (8.6%), or 'very unsafe' (0.4%), in their own neighbourhoods. Overall 87.6% of respondents said that they felt either 'very safe', (16.9%), or 'safe', (70.7%), in their own neighbourhoods.

- D15 Very few people said that they felt unsafe when they go out with someone during the daytime, (1.5%), with 32.5% saying that they feel 'very safe' in this situation and a further 61.3% saying that they feel 'safe'. However, rather fewer people said that they felt safe when they go out alone during the day time : 22.4% said that they feel 'very safe' and 66.7% 'safe'. 6.4% said that they felt 'unsafe' and 0.2% that they felt 'very unsafe'.
- D16 Nearly one in five respondents said that they felt unsafe when they go out with someone at night time: 17.8% said that they felt 'unsafe' and 2.1% that they felt 'very unsafe'. Only 8.7% said that they felt 'very safe' with a further 65.4% saying that they felt 'safe'.
- D17 The majority of respondents said that they felt unsafe when they go out alone at night. 37.6% said that they felt 'unsafe' with a further 16.2% saying that they felt 'very unsafe' in this situation, (53.8% felt unsafe). Only 3.5% felt 'very safe' and 34.5% felt 'safe'.
- D18 The majority of respondents said that they felt safe if they visit a town centre in the daytime: 15.5% said that they felt 'very safe' and 69.2% that they feel 'safe'. (84.2% - feel safe in a town centre in the day time). Conversely very few respondents said that they felt safe when they visit a town centre at night time. Only 1.5% said that they felt 'very safe' with a further 23.2% saying that they felt 'safe' in this situation. 43.4 said that they would feel 'unsafe', and 21.8% 'very unsafe'.
- D19 Therefore respondents feel most safe in their own homes, (93.6% safe), and if they are out with someone during the day time, (93.8%). Indeed the latter is when people are least likely to feel unsafe. Where people feel most unsafe is in a town centre at night time, (65.2% unsafe); and if they are out alone at night time, (53.8% unsafe).

- D20 When asked whether the fear of crime stopped them doing anything they would like to do, just under a quarter, (24.6%), did not indicate anything that they were stopped from doing, i.e. fear of crime does not stop them from doing things that they want to do.
- D21 Over half of all respondents said that fear of crime stopped them walking in the park at night time, (60.5%); and using a cash point at night time, (52.1%). Over a quarter said that fear of crime stopped them visiting a town centre at night time, (44.7%); using public transport at night, (36.8%) and going out at night, (26.5%).
- D22 The most mentioned activities where fear of crime stops respondents from being involved, are those activities which relate to the night time. Least mentioned activities were going to the shops in the day time, (1.3%); using public transport in the day time, (1.5%); and visiting a town centre in the day time, (1.9%).

Feeling Afraid & Helping People to Feel Safe

- D23 Respondents were asked about a number of factors and asked which of them they felt were responsible for making people afraid that they would be victims of crime. Two factors emerge as being of major importance: 'not enough Police patrols in their area', (69%); and the 'activities of young people in the area where they live', (64.1%).
- D24 However, five other factors were mentioned by nearly half of all respondents as being responsible for this. 'Poor response when the Police are called', (49.5%); 'reports of crime in the papers and on the news', (49.2%); 'knowing someone who has been the victim of crime', (49%); 'having already been a victim', (48.6%); and 'the area they live in having a bad reputation', (48.1%).

- D25 Not having a 'Neighbourhood Watch or similar scheme', (15.2%); and 'racial abuse', (16.7%), were the least mentioned, although only 3.5% of respondents said that none of the listed were responsible for making people afraid that they would be victims of crime.
- D26 Respondents were asked, from a list, which they felt help people to feel safe. Of all respondents only 2.7% said that 'none of the above' aspects listed in the questionnaire would help people to feel safe. Mentioned by over 70% of all respondents were 'regular and frequent Police patrols', (76.4%); that the 'area where they live has a good reputation', (72.1%); and that there is a 'good response when the Police are called', (70.3%).
- D27 Also of note as being important are there being 'no problems from young people', (64.2%); 'tough sentencing of criminals', (63.3%); 'greater CCTV presence', (62.9%); and the 'property having appropriate security', (62.4%). 'Stories of bravery in papers or news', (13.4%); and 'TV programmes like Crimewatch', (11.8%), were of least importance.
- D28 There are direct correlations between Police patrols being a reason to feel safe, (76.4%); and lack of them a reason to feel unsafe, (69%); and similarly the activities of young people, (64.2%); and/or there being no problems from young people, (64.1%). Although for some of the issues raised there are direct correlations between the lack or presence of activities, provision or problems, this was not universally the case. Notable amongst these were newspaper stories about bravery making only 13.4% feel safe but stories about crime making 49.2% feel unsafe. Having appropriate home security makes people feel safe, (62.4%); but it not being present does not necessarily make them feel unsafe, (20.4%).

CCTV

- D29 Finally respondents were asked a series of questions relating to Closed Circuit Television, (CCTV). The first of these questions was on where they felt CCTV should be placed. Mentioned by over 80% of all respondents was the placing of CCTV in town centres, (85%); and in car parks, (88.8%). Also mentioned by a substantial majority of respondents were in shops and shopping centres, (75.4%); and in banks and building societies, (67%).
- D30 Less than half of all respondents noted that CCTV should be placed in parks, (48.2%); on housing estates, (43.3%); or in public buildings, (44.4%). However, only 4.7% of respondents noted that they thought CCTV should not be used in public places.
- D31 Respondents were then asked what they thought was the MOST important function of CCTV. Almost half of all respondents, (45.1%), thought that the most important function was to 'help catch people who commit crime'. The second most mentioned function was that of 'to stop trouble from starting', (29.2%). 13.2% of respondents felt that CCTV's most important function was to prevent crime, ('to scare people who might commit crime'); and 7.6% thought it was 'to make people feel safe'. Only 0.8% of respondents felt that the most important function of CCTV was 'to spy on people'.
- D32 Just under three quarters of all respondents felt that CCTV is effective in catching criminals. 12.5% thought it was very effective and a further 61.5% that it is effective, (total - 74%). 14.7% feel that it is not effective and 7.7% gave a no opinion response with 3.5% not answering the question. Rather fewer respondents feel that CCTV is effective in making people feel safe: 10.1% said that it is very effective and 58.3% said that it is effective, (68.4%). 19.4% felt that it is not effective with 12.2% giving a no opinion response or missing the question.
- D33 Only just over half of all respondents felt that CCTV is effective in

scaring off criminals. 9.3% feel it is very effective with 44% saying it is effective. However 29% were of the view that it is not effective. (12.6% no opinion, 5.1% missing data).

D34 Overwhelmingly, the vast majority of respondents felt that the decisions on where CCTV should be placed should be taken by the Police with 81.5% of respondents considering this to be appropriate. Over half of all respondents also mentioned the local Council, (57.1%); and local neighbourhood watch groups, (58.1%). 42.4% of respondents felt that local shop keepers should decide and 35.7% the Parish Councils.

D35 Only 8.2% of respondents felt that the Courts should make these decisions and only a small minority considered that private security firms should be involved, (4.4%). The least favoured decision maker on where CCTV should be placed was the Government with only 3.7% considering that the Government should decide. 2.5% of respondents did not mention any of the above and 2.3% mentioned other decision makers.

SURVEY FINDINGS

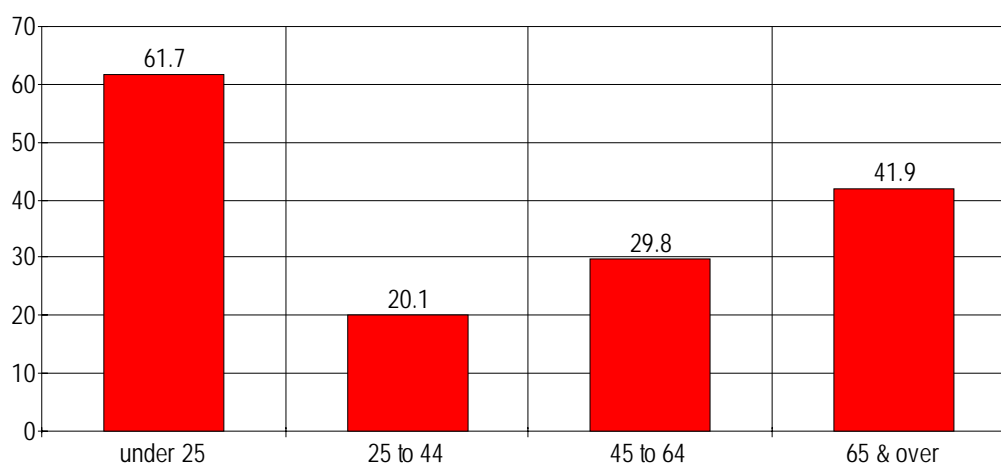
1.0 VICTIMS OF CRIME?

Questions 1 to 4 - *'Have you ever been a victim of crime?' 'Please could you tell us which crimes you have been a victim of?' 'And for each crime you have been a victim of could you tell us approximately how long ago this was?' 'And for each crime, did this happen in the Borough of Charnwood or elsewhere?'* Appendix 2 - Pages 4 to 27

1.1 Less than one third of all respondents said that they had not been a victim of crime, (32.4%). Men were slightly less likely, (28.6%), than women, (35.8%), to consider that they had not been a victim of crime. (Unweighted count - 320 of the 1005 respondents said that they had not been a victim of crime).

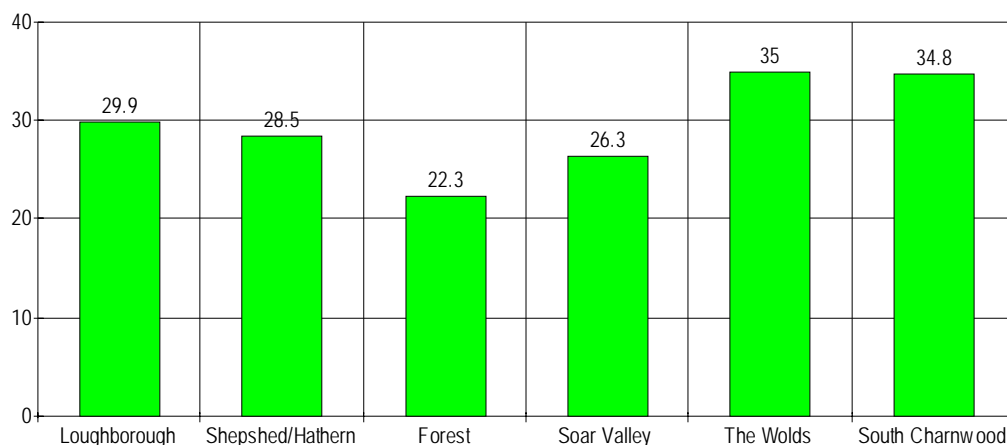
1.2 There were substantial differences in age, with 61.7% of young people under 25 years and 41.9% of those aged 65 years and over saying that they had not been a victim of crime, compared with only 20.1% of those aged 25 to 44 years and 29.8% of those aged 45 to 64 years.

Not been a victim of crime



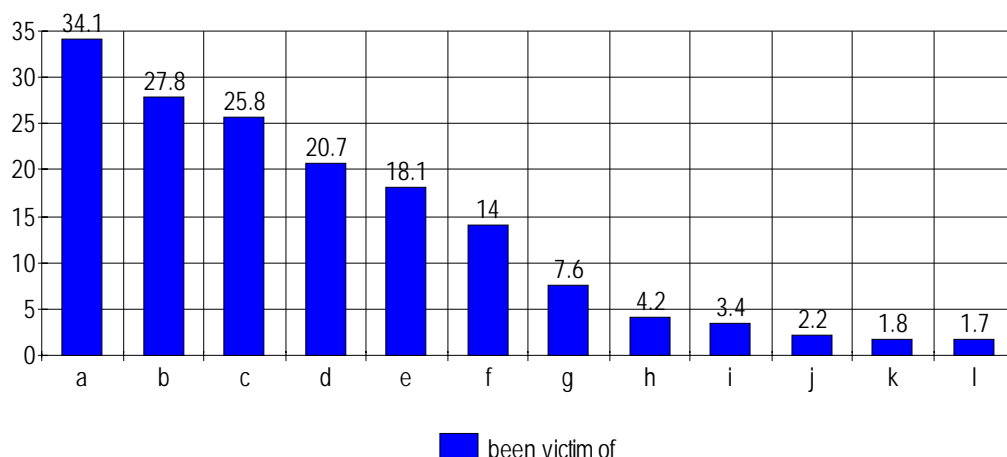
1.3 There were less marked but still significant differences in experiences of having been a victim of crime by area.

Victim of Crime by Area



- 1.4 Respondents from the Wolds and South Charnwood were most likely to consider that they had not been victims of crime, (35% and 34.8% respectively), and those from Forest and Soar Valley least likely, (22.3% and 26.3% respectively).
- 1.5 When asked which crimes they had been victims of the 685 people who said that they had been a victim noted 1613 responses: 2.35 for each person.
- 1.6 Respondents were most likely to have been a victim of damage to their cars, (34.1% of the overall sample); have had property stolen from their car, 27.8% of the overall sample); and/or had a theft of property from their homes, (25.8%).
- 1.7 Only 1.7% said that they had been a victim of domestic violence; 1.8% a victim of racial abuse, and 3.4% a victim of street robbery.

Been Victim of these Crimes



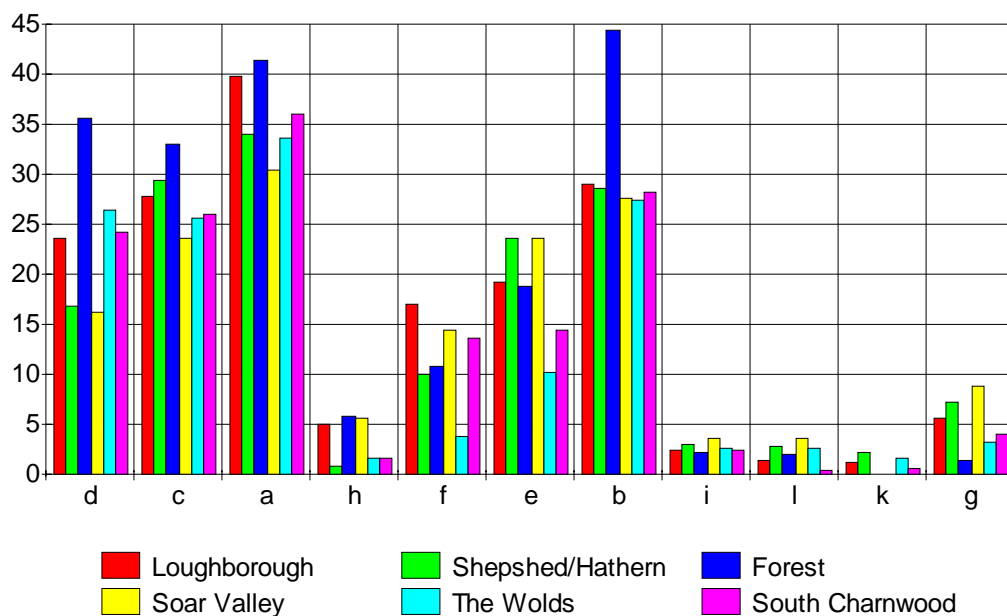
		been victim of
damage to your car	a	34.1
theft of property from your car	b	27.8
theft of property from your home	c	25.8
break in at your home	d	20.7
car theft	e	18.1
damage to your home	f	14
violence against the person	g	7.6
pick pocketing	h	4.2
street robbery	i	3.4
some other crime	j	2.2
racial abuse	k	1.8
domestic violence	l	1.7

1.8 Overleaf the details of each crime by area is shown. As can be seen from this figure, respondents from the Forest area were MOST likely to report that they had suffered a break in at their homes, (35.6%); theft of property from their homes, (33%); damage to their cars, (41.4%); and theft of property from their cars, (44.3%).

1.9 Respondents from Soar Valley were LEAST likely to report that they had suffered a break in at their homes, (16.2%); theft of property from their homes, (23.6%); damage to their car, (30.3%); and theft of property from their car, (27.6%).

1.10 Damage to the car was the crime most mentioned in all areas with the exception of Forest where this crime was marginally overtaken by theft of property from the car, (44.3% - theft of property from - 41.4% damage to the car).

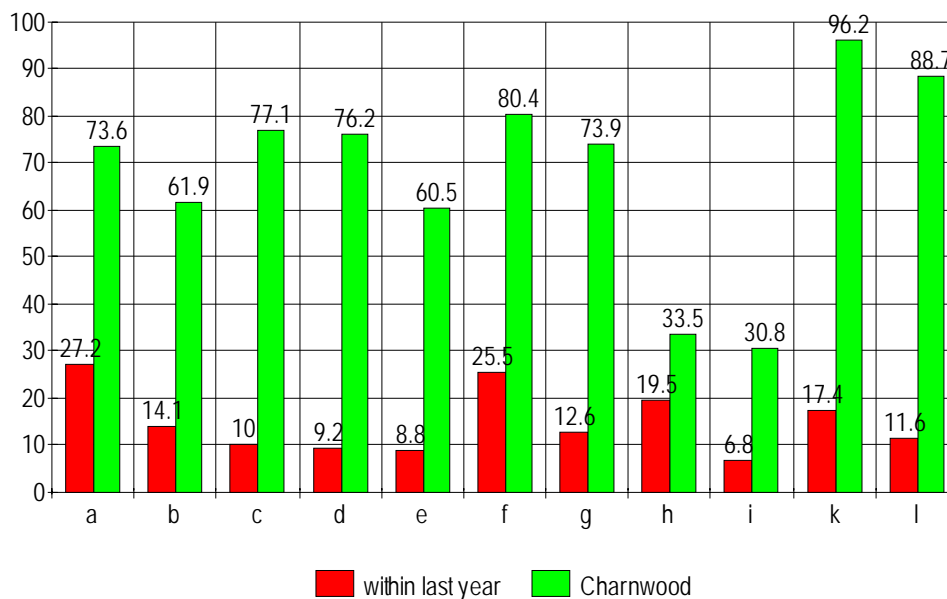
Experiences of Crime by Area



		<i>L'bro</i>	<i>Shep/Hath</i>	<i>Forest</i>	<i>S.Valley</i>	<i>Wolds</i>	<i>S.Charn</i>
<i>break in at your home</i>	<i>d</i>	23.5	16.7	35.6	16.2	26.4	24.2
<i>theft of property from your home</i>	<i>c</i>	27.8	29.3	33	23.6	25.5	26
<i>damage to your car</i>	<i>a</i>	39.7	33.9	41.4	30.3	33.5	36
<i>pick pocketing</i>	<i>h</i>	5	0.7	5.7	5.5	1.5	1.6
<i>damage to your home</i>	<i>f</i>	17	10	10.7	14.4	3.7	13.6
<i>car theft</i>	<i>e</i>	19.2	23.5	18.7	23.5	10.2	14.3
<i>theft of property from your car</i>	<i>b</i>	29	28.5	44.3	27.6	27.3	28.1
<i>street robbery</i>	<i>i</i>	2.4	2.9	2.1	3.6	2.6	2.3
<i>domestic violence</i>	<i>l</i>	1.4	2.7	2	3.5	2.6	0.3
<i>racial abuse</i>	<i>k</i>	1.2	2.1			1.5	0.6
<i>violence against the person</i>	<i>g</i>	5.5	7.1	1.3	8.8	3.2	3.9

1.11 Respondents who said that they had been a victim of the crimes listed were asked, for each of the crimes they had mentioned, approximately how long ago this crime had occurred and whether or not it had taken place in the Borough of Charnwood.

When and where did this take place?



		<i>within last year</i>	<i>Charnwood</i>	<i>(no. respondents)</i>
<i>damage to your car</i>	<i>a</i>	27.2	73.6	361
<i>theft of property from your car</i>	<i>b</i>	14.1	61.9	268
<i>theft of property from your home</i>	<i>c</i>	10	77.1	279
<i>break in at your home</i>	<i>d</i>	9.2	76.2	246
<i>car theft</i>	<i>e</i>	8.8	60.5	169
<i>damage to your home</i>	<i>f</i>	25.5	80.4	132
<i>violence against the person</i>	<i>g</i>	12.6	73.9	49
<i>pick pocketing</i>	<i>h</i>	19.5	33.5	42
<i>street robbery</i>	<i>i</i>	6.8	30.8	25
<i>racial abuse</i>	<i>k</i>	17.4	96.2	8
<i>domestic violence</i>	<i>l</i>	11.6	88.7	12

1.12 Only in the cases of damage to their cars, (27.2%); and damage to their homes, (25.5), did more than a quarter of those who had reported the crime say that it had taken place in the last 12 months.

1.13 Less than 10% of those who said that they had been a victim of a

break in at their home, (9.2%); car theft, (8.8%); and street robbery, (6.8%); said that it had taken place in the last year.

- 1.14 It should be noted, however, that in the cases of street robbery, racial abuse and domestic violence the number of respondents was extremely small, (25 or less), and these figures can only be considered to be indicative.
- 1.15 Respondents were asked whether the crime had taken place in the Borough of Charnwood or elsewhere, with respondents being able to indicate if they had suffered from this crime on more than one occasion, or if the crime had occurred both in the Borough AND elsewhere.
- 1.16 Over two thirds of all crimes had occurred in the Borough of Charnwood with the exception of theft of property from their cars, (61.9%); car theft, (60.5%); pick pocketing, (33.5%); and street robbery, (30.8%).
- 1.17 As may have been expected over three quarters of respondents who had been victims of theft of property from their homes, (77.1%); a break in at their homes, (76.2%); damage to their homes, (80.4%), said that this had taken place in the Borough of Charnwood. Those where this was not the case presumably had moved house since the crimes had occurred.

2.0 SOMEONE CLOSE BEEN A VICTIM OF CRIME?

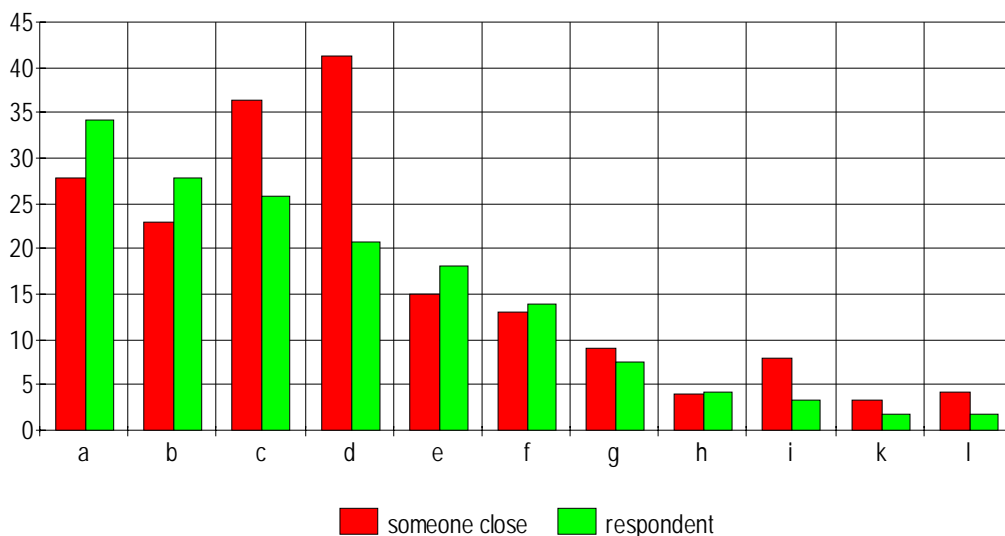
Questions 5 to 8 - *'Has someone close to you ever been a victim of crime?' 'Please could you tell us which crimes they have been a victim of?' 'And for each crime they have been a victim of could you tell us approximately how long ago this was?' 'And for each crime, did this happen in the Borough of Charnwood or elsewhere?'* Appendix 2 - Pages 28 to 52

2.1 Whereas the minority, (32.4%), of respondents said that they had been a victim of crime, the large majority, (76.1%), said that someone close to them, (a relative, a neighbour or a close friend), had been a victim of crime.



2.2 The differences that were apparent between the experiences of having been a victim of crime and age groups largely disappear in relation to the question on someone close to the respondent having been a victim. Although only 38.3% of respondents aged under 25 years had not themselves been a victim, 75.7% had someone close who had and this is broadly comparable with the other age groups : 25 to 44 - 80.8% someone close had been a victim; 45 to 64 years - 75.9%; and 65 and over - 68.6%.

Someone close been a victim?

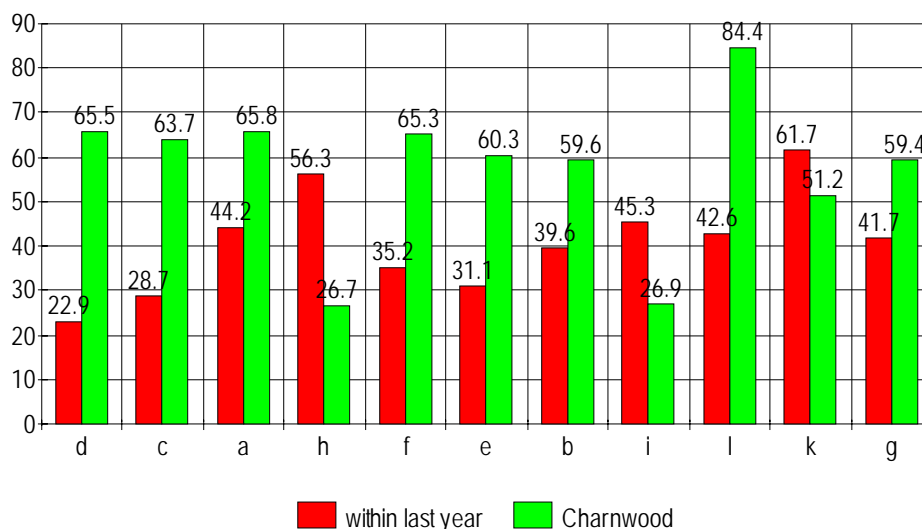


		<i>someone close</i>	<i>respondent</i>
<i>damage to their car</i>	<i>a</i>	<i>27.7</i>	<i>34.1</i>
<i>theft of property from their car</i>	<i>b</i>	<i>23</i>	<i>27.8</i>
<i>theft of property from their home</i>	<i>c</i>	<i>36.3</i>	<i>25.8</i>
<i>break in at their home</i>	<i>d</i>	<i>41.3</i>	<i>20.7</i>
<i>car theft</i>	<i>e</i>	<i>14.9</i>	<i>18.1</i>
<i>damage to their home</i>	<i>f</i>	<i>13</i>	<i>14</i>
<i>violence against the person</i>	<i>g</i>	<i>9.1</i>	<i>7.6</i>
<i>pick pocketing</i>	<i>h</i>	<i>3.9</i>	<i>4.2</i>
<i>street robbery</i>	<i>i</i>	<i>8</i>	<i>3.4</i>
<i>racial abuse</i>	<i>k</i>	<i>3.4</i>	<i>1.8</i>
<i>domestic violence</i>	<i>l</i>	<i>4.1</i>	<i>1.7</i>

2.3 Respondents were MOST likely to report that someone close to them had had a break in at their home, (41.3%). Indeed twice as many respondents said that they had someone close to them who had suffered this than had themselves been victims, (20.7% of respondents said that they had themselves had been a victim of a break in at home).

- 2.4 Similarly, slightly more respondents said that they had someone close to them who had suffered from a theft of property from their home, (36.3% - someone close, 25.8% - self). (This also occurs relating to racial abuse, domestic violence, street robbery and violence against the person).
- 2.5 Rather fewer respondents reported that someone close to them had been a victim of a car related crime than had reported that it had happened to themselves. (Car damage - someone close - 27.7%, self - 34.1%; theft of property from the car - someone close - 23%, self - 27.8%; car theft - someone close - 14.9%, self - 18.1%).
- 2.6 Respondents who had reported that someone close had been a victim of one or more of the crimes were asked when this had occurred and whether it had take place in the Borough of Charnwood or elsewhere, (or both). Over half of those who said that they had someone close to them who had suffered from racial abuse, (61.7%); and pick pocketing, (56.3%), said that this had occurred within the last year. However, the numbers of respondents are small, (18 and 39 respectively), and this should be considered to be indicative only.

When and where did this happen?



		<i>within last year</i>	<i>Charnwood</i>	<i>(no: respondents)</i>
<i>break in at their home</i>	<i>d</i>	22.9	65.5	427
<i>theft of property from their home</i>	<i>c</i>	28.7	63.7	404
<i>damage to their car</i>	<i>a</i>	44.2	65.8	276
<i>pick pocketing</i>	<i>h</i>	56.3	26.7	39
<i>damage to their home</i>	<i>f</i>	35.2	65.3	121
<i>car theft</i>	<i>e</i>	31.1	60.3	155
<i>theft of property from their car</i>	<i>b</i>	39.6	59.6	212
<i>street robbery</i>	<i>i</i>	45.3	26.9	68
<i>domestic violence</i>	<i>l</i>	42.6	84.4	32
<i>racial abuse</i>	<i>k</i>	61.7	51.2	18
<i>violence against the person</i>	<i>g</i>	41.7	59.4	87

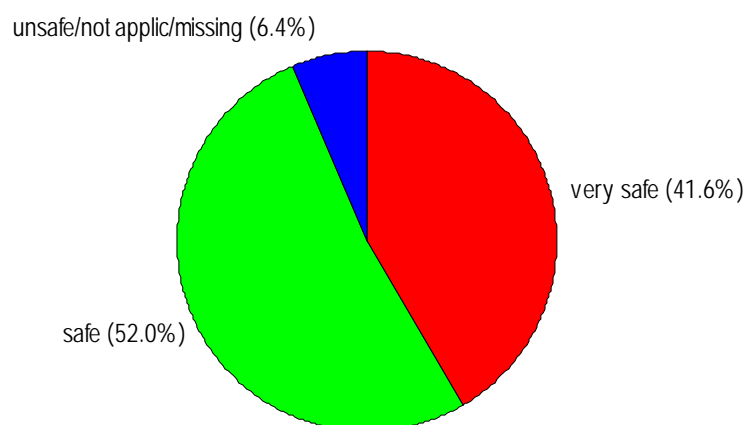
2.7 Break in at their homes, (22.9%); and theft of property from their homes, (28.7%); were least likely to have happened to someone close to them within the last year and street robbery, (26.9%); and pick pocketing, (26.7%), least likely to have occurred to the people close to them in the Borough of Charnwood.

3.0 FEELING SAFE

Questions 9 & 10 - *'Please could you tell us how safe you feel in the following situations?' 'Does the fear of crime stop you doing anything that you would like to do?'* Appendix 2 - Pages 52 to 63

3.1 The large majority of respondents said that they felt either 'very safe', (41.6%), or 'safe', (52%), in their own homes. (93.6% felt safe). 3.6% of respondents said that they felt 'unsafe', with a further 0.4% saying that they felt 'very unsafe'. (2.3% did not answer this question and 0.1% said that the question was 'not applicable').

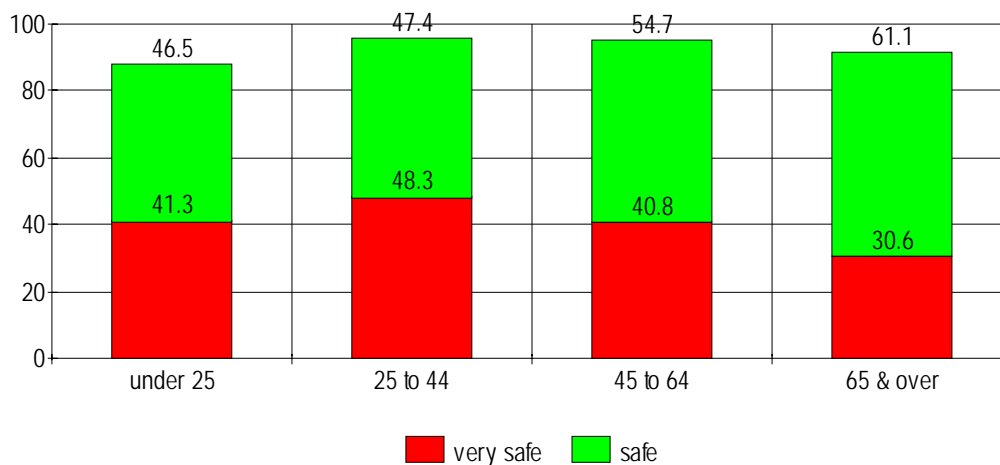
How safe in own home?



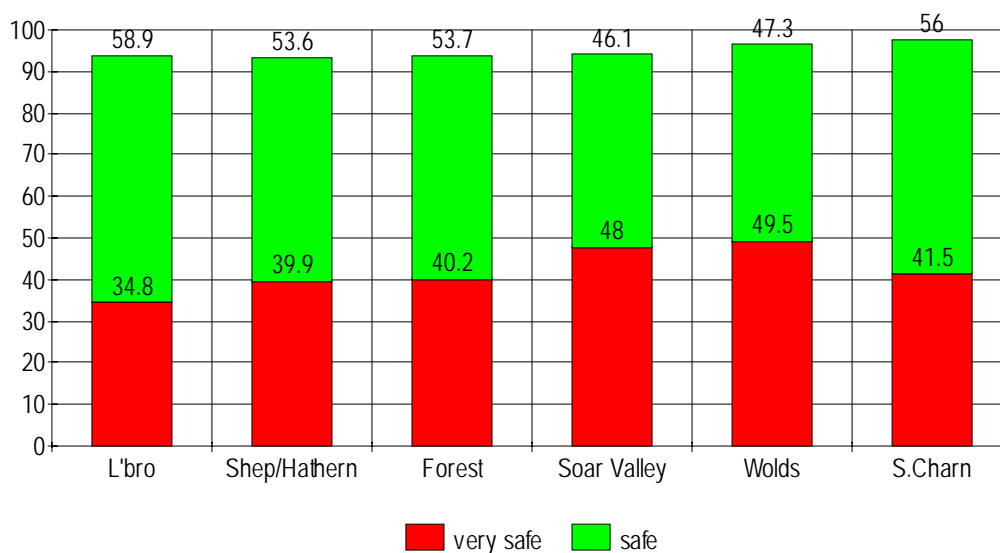
3.2 Although there is no significant difference between age groups relating to the overall feeling of safety, (very safe and safe combined), people aged 65 years and over were least likely to say that they felt 'very safe' in their own homes, (30.6% compared with under 25's - 41.3%, 25 to 44 - 48.3%, 45 to 64 - 40.8%).

3.3 Differences can also be observed relating to area in this respect with only 34.8% of respondents living in Loughborough saying that they feel 'very safe' compared with 49.5% of those who live in The Wolds and 48% of those who live in Soar Valley.

Safe in own home by Age



Safe in own home by Area



3.4 Nearly one in ten respondents, (9%), said that they felt either 'unsafe', (8.6%), or 'very unsafe' (0.4%), in their own neighbourhoods. Young people were the most likely to say that they felt unsafe, (Under 25 - 12.1% compared with 25 to 44 - 8.2%, 45 to 64 - 8.8%, 65 & over - 9.1%); although the numbers of young people are extremely small and the results are not statistically significant.



3.5 Overall 87.6% of respondents said that they felt either 'very safe', (16.9%), or 'safe', (70.7%), in their own neighbourhoods. Least likely to feel 'very safe' were people who live in Loughborough, (15.9%); and most likely were those living in The Wolds, (35.2%).

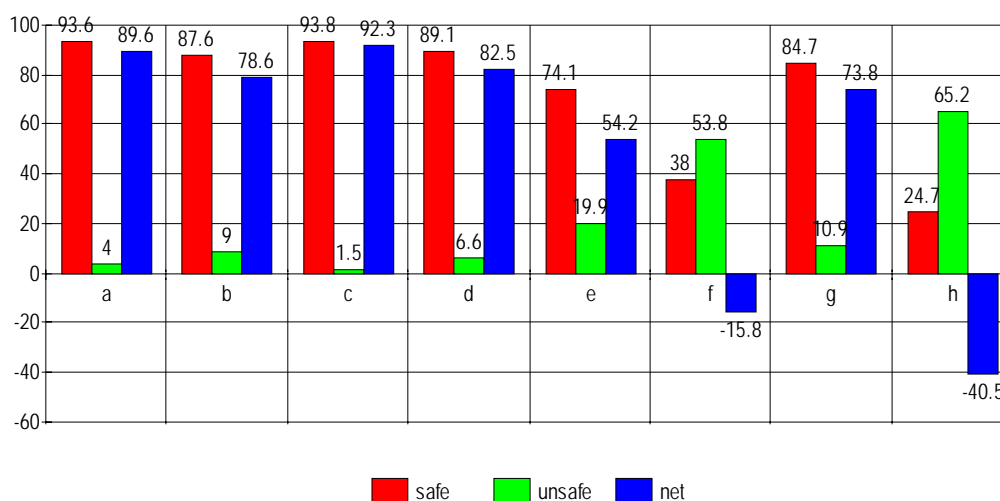
3.6 Very few people said that they felt unsafe when they go out with someone during the daytime, (1.5%), with 32.5% saying that they feel 'very safe' in this situation and a further 61.3% saying that they feel 'safe'.

3.7 However, rather fewer people said that they felt safe when they go out alone during the day time : 22.4% said that they feel 'very safe' and 66.7% 'safe'. 6.4% said that they felt 'unsafe' and 0.2% that they felt 'very unsafe'.

3.8 Nearly one in five respondents said that they felt unsafe when they go out with someone at night time: 17.8% said that they felt 'unsafe' and 2.1% that they felt 'very unsafe'. Only 8.7% said that they felt 'very safe' with a further 65.4% saying that they felt 'safe'.

- 3.9 The majority of respondents said that they felt unsafe when they go out alone at night. 37.6% said that they felt 'unsafe' with a further 16.2% saying that they felt 'very unsafe' in this situation, (53.8% felt unsafe). Only 3.5% felt 'very safe' and 34.5% felt 'safe'.
- 3.10 The majority of respondents said that they felt safe if they visit a town centre in the daytime: 15.5% said that they felt 'very safe' and 69.2% that they feel 'safe'. (84.2% - feel safe in a town centre in the day time).
- 3.11 Conversely very few respondents said that they felt safe when they visit a town centre at night time. Only 1.5% said that they felt 'very safe' with a further 23.2% saying that they felt 'safe' in this situation. 43.4 said that they would feel 'unsafe', and 21.8% 'very unsafe'.
- 3.12 The previous figures show that respondents feel most safe in their own homes, (93.6% safe), and if they are out with someone during the day time, (93.8%). Indeed the latter is when people are least likely to feel unsafe.
- 3.13 Where people feel most unsafe is in a town centre at night time, (65.2% unsafe); and if they are out alone at night time, (53.8% unsafe). The net scores show that more people feel unsafe in these two situations than feel safe. (Town centre at night time - net score -40.5% and out alone at night - net score -15.8%).

Feeling safe?



		safe	unsafe	net
<i>in own home</i>	a	93.6	4	89.6
<i>in own neighbourhood</i>	b	87.6	9	78.6
<i>out with someone - day time</i>	c	93.8	1.5	92.3
<i>out alone - day time</i>	d	89.1	6.6	82.5
<i>out with someone - night time</i>	e	74.1	19.9	54.2
<i>out alone - night time</i>	f	38	53.8	-15.8
<i>town centre - day time</i>	g	84.7	10.9	73.8
<i>town centre - night time</i>	h	24.7	65.2	-40.5

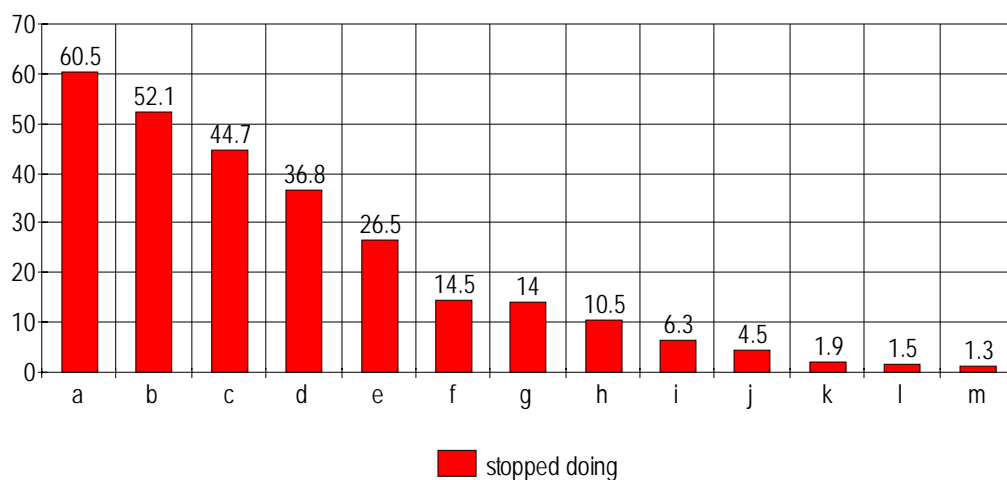
3.14 When asked whether the fear of crime stopped them doing anything they would like to do, just under a quarter, (24.6%), did not indicate anything that they were stopped from doing, i.e. fear of crime does not stop them from doing things that they want to do.

3.15 Women were far more likely than men to indicate that there was something that they were stopped from doing. (Nothing mentioned as being stopped from doing - men 41.3%, women 10.8%).

3.16 Over half of all respondents said that fear of crime stopped them walking in the park at night time, (60.5%); and using a cash point at night time, (52.1%). Over a quarter said that fear of crime stopped them visiting a town centre at night time, (44.7%); using public transport at night, (36.8%) and going out at night, (26.5%).

3.17 The most mentioned activities where fear of crime stops respondents from being involved, are those activities which relate to the night time. Least mentioned activities were going to the shops in the day time, (1.3%); using public transport in the day time, (1.5%); and visiting a town centre in the day time, (1.9%).

Fear of crime stop you doing anything?



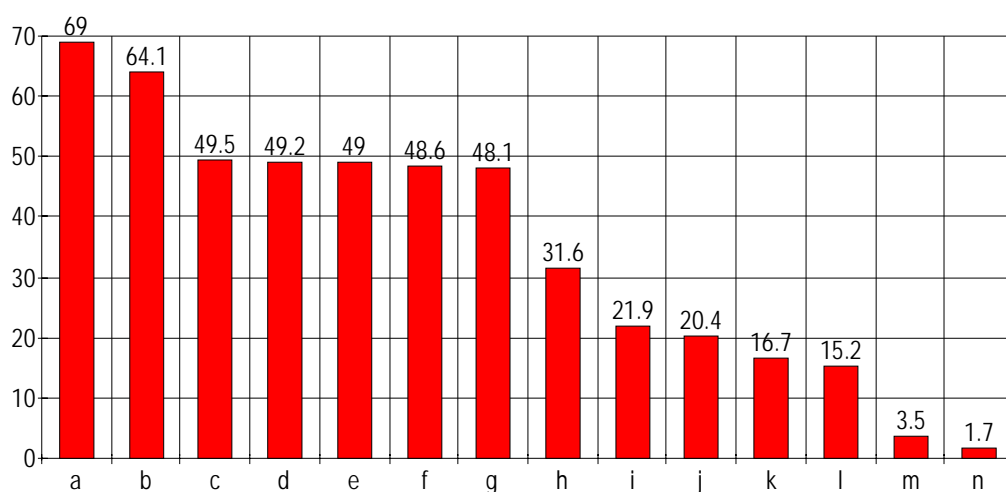
		<i>stopped doing</i>
<i>walking in the park at night time</i>	<i>a</i>	<i>60.5</i>
<i>using a cash point at night time</i>	<i>b</i>	<i>52.1</i>
<i>visiting a town centre at night time</i>	<i>c</i>	<i>44.7</i>
<i>using public transport at night time</i>	<i>d</i>	<i>36.8</i>
<i>going out at night time</i>	<i>e</i>	<i>26.5</i>
<i>carrying cash in purse or wallet</i>	<i>f</i>	<i>14.5</i>
<i>using a mobile phone in a public place</i>	<i>g</i>	<i>14</i>
<i>using a cash point in day time</i>	<i>h</i>	<i>10.5</i>
<i>walking in the park in day time</i>	<i>i</i>	<i>6.3</i>
<i>collecting money from the PO</i>	<i>j</i>	<i>4.5</i>
<i>visiting a town centre in the day time</i>	<i>k</i>	<i>1.9</i>
<i>using public transport in day time</i>	<i>l</i>	<i>1.5</i>
<i>going to shops in day time</i>	<i>m</i>	<i>1.3</i>

4.0 FEELING AFRAID

Questions 11 & 12 - 'In your opinion, which of the following are responsible for making people afraid that they will be victims of crime?' 'Which of the following help people to feel safe?' Appendix 2 - Pages 64 to 71

4.1 Respondents were asked about a number of factors and asked which of them they felt were responsible for making people afraid that they would be victims of crime. Two factors emerge as being of major importance: 'not enough Police patrols in their area', (69%); and the 'activities of young people in the area where they live', (64.1%).

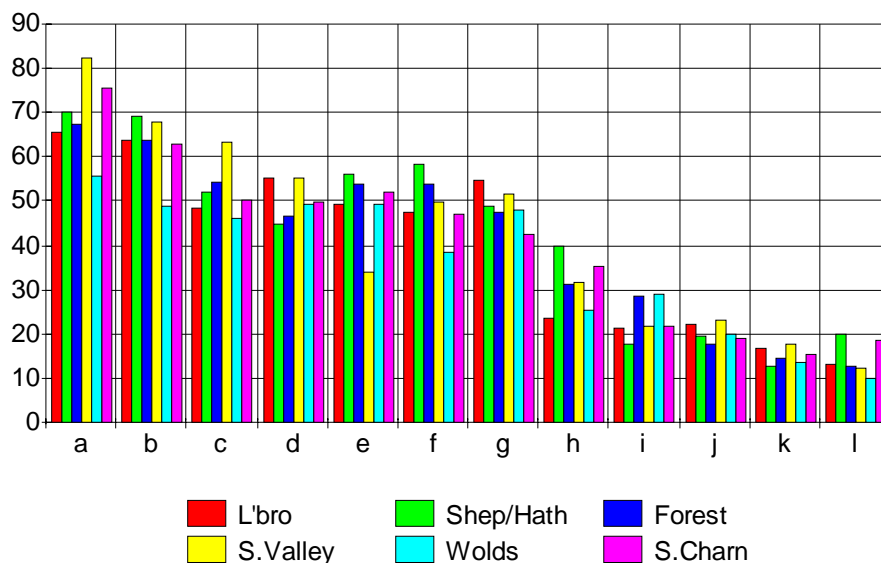
Responsible for making people afraid



<i>not enough Police patrols</i>	a	69
<i>activities of young in area where live</i>	b	64.1
<i>poor response when Police called</i>	c	49.5
<i>report of crime in papers on news</i>	d	49.2
<i>know someone who has been a victim</i>	e	49
<i>have been a victim of crime</i>	f	48.6
<i>area live in has bad reputation</i>	g	48.1
<i>lack of CCTV</i>	h	31.6
<i>TV programmes like Crimewatch</i>	i	21.9
<i>property lacks security measures</i>	j	20.4
<i>racial abuse</i>	k	16.7
<i>no Neighbourhood Watch or similar</i>	l	15.2
<i>none of the above</i>	m	3.5
<i>other</i>	n	1.7

- 4.2 However, five other factors were mentioned by nearly half of all respondents as being responsible for this. 'Poor response when the Police are called', (49.5%); 'reports of crime in the papers and on the news', (49.2%); 'knowing someone who has been the victim of crime', (49%); 'having already been a victim', (48.6%); and 'the area they live in having a bad reputation', (48.1%).
- 4.3 Not having a 'Neighbourhood Watch or similar scheme', (15.2%); and 'racial abuse', (16.7%), were the least mentioned, although only 3.5% of respondents said that none of the listed were responsible for making people afraid that they would be victims of crime.
- 4.4 As can be seen from the figure on the page overleaf these seven reasons for feeling afraid remain broadly similar across all areas. Differences in emphasis do occur however. An example of this includes the 'the activities of young people in the area where they live' where, in The Wolds 49% of respondents indicated that this was a cause of fear compared to over 60% in all other areas.
- 4.5 Another example is the differences between areas relating to Police response time being 'poor'. Over 60% of respondents cited this as a cause in the Soar Valley, (63.1%); compared with only 46.2% in The Wolds.

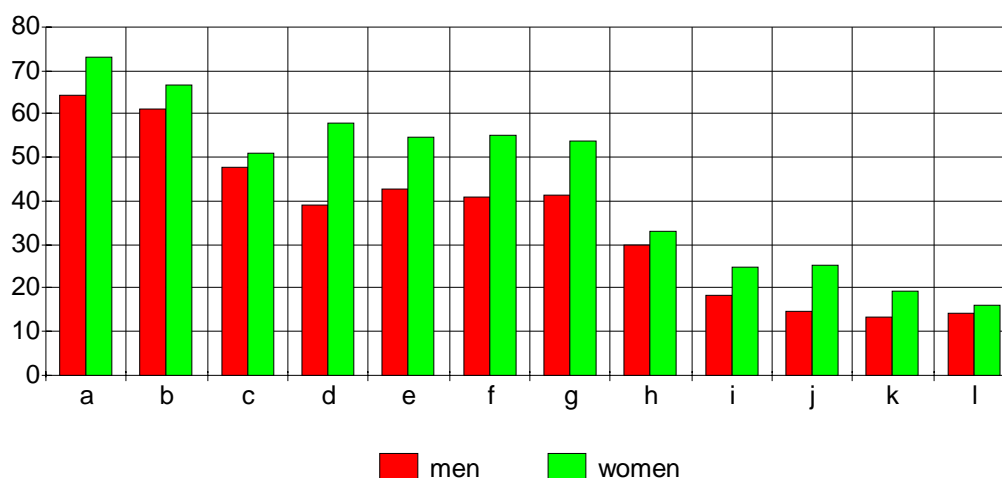
Responsible for making afraid by Area



		L'bro	Shep/Hath	Forest	S.Valley	Wolds	S.Charn
<i>not enough Police patrols</i>	a	65.8	70.1	67.2	82.1	55.8	75.6
<i>activities of young in area where live</i>	b	63.8	69.1	63.8	67.9	49	62.8
<i>poor response when Police called</i>	c	48.3	52.1	54.1	63.1	46.2	50.2
<i>report of crime in papers on news</i>	d	55.3	44.7	46.4	55	49.4	49.8
<i>know someone who has been a victim</i>	e	49.5	56.1	53.8	34.1	49.3	52.2
<i>have been a victim of crime</i>	f	47.7	58.2	54	49.8	38.5	47.2
<i>area live in has bad reputation</i>	g	54.6	48.9	47.5	51.4	48	42.4
<i>lack of CCTV</i>	h	23.6	39.7	31	31.6	25.3	35.2
<i>TV programmes like Crimewatch</i>	i	21.1	17.5	28.7	21.7	28.9	21.5
<i>property lacks security measures</i>	j	22.2	19.4	17.5	22.9	19.7	19.1
<i>racial abuse</i>	k	16.6	12.5	14.4	17.5	13.5	15.3
<i>no Neighbourhood Watch or similar</i>	l	12.9	19.9	12.8	12.1	10.1	18.5

4.6 Women were more likely than men to consider all issues as being responsible for making people afraid although the priorities between the genders remain the same.

Responsible for making afraid by Gender



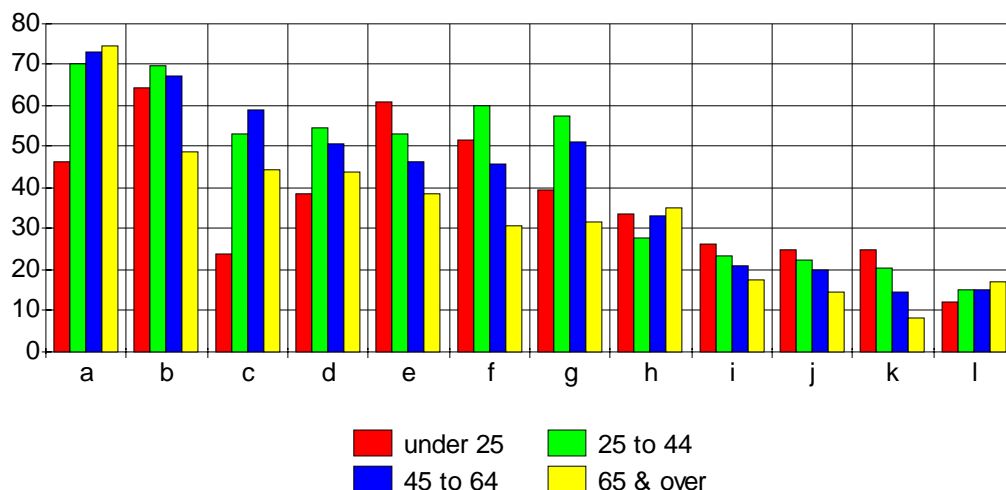
		<i>men</i>	<i>women</i>
<i>not enough Police patrols</i>	<i>a</i>	64.2	72.9
<i>activities of young in area where live</i>	<i>b</i>	61.2	66.6
<i>poor response when Police called</i>	<i>c</i>	47.8	51.1
<i>report of crime in papers on news</i>	<i>d</i>	39	58
<i>know someone who has been a victim</i>	<i>e</i>	42.8	54.5
<i>have been a victim of crime</i>	<i>f</i>	40.9	55.2
<i>area live in has bad reputation</i>	<i>g</i>	41.3	53.9
<i>lack of CCTV</i>	<i>h</i>	30.1	32.9
<i>TV programmes like Crimewatch</i>	<i>i</i>	18.4	24.9
<i>property lacks security measures</i>	<i>j</i>	14.5	25.4
<i>racial abuse</i>	<i>k</i>	13.3	19.5
<i>no Neighbourhood Watch or similar</i>	<i>l</i>	14.2	16

4.7 Young people were far less likely to consider issues to do with the Police as causes of fear than were older groups. Only 46.1% of people under the age of 25 years thought that 'not enough Police patrols' was a cause of fear compared with over 70% in all other age groups.

4.8 Similarly only 24.1% of young people thought that a 'poor response when Police are called' was a cause of fear compared with 58.8% of respondents 45 to 64 years, 53% of those aged 25 to 44 years and 44.2% of respondents aged 65 years and over.

4.9 For young people the most mentioned cause of fear were the 'activities of young people in the area where I live', (64.4%); and 'knowing someone who has been the victim of crime', (61%).

Responsible for making afraid by Age

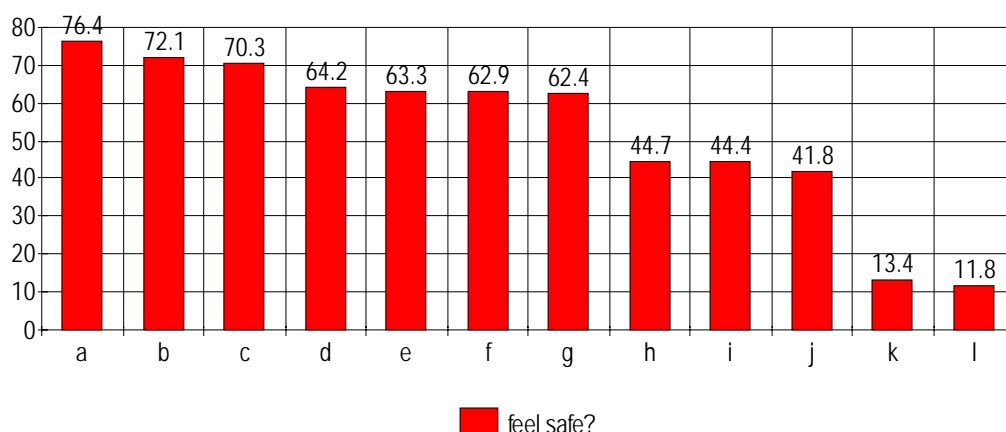


		<i>under 25</i>	<i>25 to 44</i>	<i>45 to 64</i>	<i>65 & over</i>
<i>not enough Police patrols</i>	<i>a</i>	46.1	70.4	73.2	74.4
<i>activities of young in area where live</i>	<i>b</i>	64.4	69.9	67.3	48.9
<i>poor response when Police called</i>	<i>c</i>	24.1	53	58.8	44.2
<i>report of crime in papers on news</i>	<i>d</i>	38.5	54.5	50.7	44
<i>know someone who has been a victim</i>	<i>e</i>	61	53.2	46.4	38.6
<i>have been a victim of crime</i>	<i>f</i>	51.6	59.9	45.9	30.9
<i>area live in has bad reputation</i>	<i>g</i>	39.4	57.5	51.1	31.9
<i>lack of CCTV</i>	<i>h</i>	33.7	27.8	33.2	34.9
<i>TV programmes like Crimewatch</i>	<i>i</i>	26.1	23.4	21	17.5
<i>property lacks security measures</i>	<i>j</i>	24.7	22.5	20.2	14.6
<i>racial abuse</i>	<i>k</i>	25	20.5	14.4	8.4
<i>no Neighbourhood Watch or similar</i>	<i>l</i>	12.2	15.2	15.3	17.2

4.10 Racial abuse as a cause of fear is highest in the youngest age groups diminishing progressively with age. ('Racial abuse' - under 25 years - 25% to 65 years and over - 8.4%).

4.11 Respondents were asked, from a list, what they felt helped people to feel safe. Of all respondents only 2.7% said that 'none of the above' aspects listed in the questionnaire would help people to feel safe.

Help people feel safe?

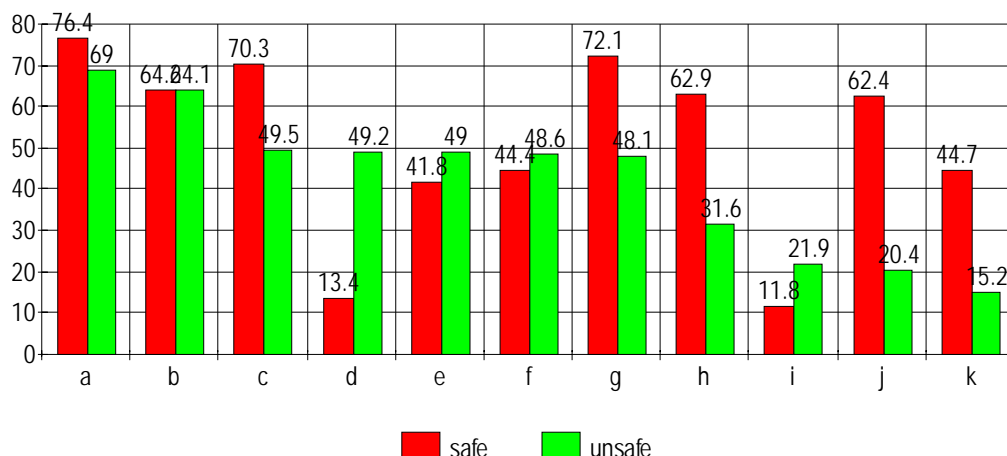


		<i>feel safe?</i>
<i>regular & frequent police patrols</i>	<i>a</i>	<i>76.4</i>
<i>area live in has good reputation</i>	<i>b</i>	<i>72.1</i>
<i>good response when police called</i>	<i>c</i>	<i>70.3</i>
<i>no problems from young people</i>	<i>d</i>	<i>64.2</i>
<i>tough sentencing</i>	<i>e</i>	<i>63.3</i>
<i>greater CCTV presence</i>	<i>f</i>	<i>62.9</i>
<i>property has appropriate security</i>	<i>g</i>	<i>62.4</i>
<i>neighbourhood watch or similar</i>	<i>h</i>	<i>44.7</i>
<i>not having been a victim</i>	<i>i</i>	<i>44.4</i>
<i>no one close been a victim</i>	<i>j</i>	<i>41.8</i>
<i>stories about bravery in papers/news</i>	<i>k</i>	<i>13.4</i>
<i>TV programmes like Crimewatch</i>	<i>l</i>	<i>11.8</i>

4.12 Mentioned by over 70% of all respondents were 'regular and frequent Police patrols', (76.4%); that the 'area where they live has a good reputation', (72.1%); and that there is a 'good response when the Police are called', (70.3%).

4.13 Also of note as being important are there being 'no problems from young people', (64.2%); 'tough sentencing of criminals', (63.3%); 'greater CCTV presence', (62.9%); and the 'property having appropriate security', (62.4%). 'Stories of bravery in papers or news', (13.4%); and 'TV programmes like Crimewatch', (11.8%), were of least importance.

Safe/Unsafe? Comparisons



		<i>safe</i>	<i>unsafe</i>
<i>police patrols</i>	<i>a</i>	76.4	69
<i>young people</i>	<i>b</i>	64.2	64.1
<i>police response</i>	<i>c</i>	70.3	49.5
<i>papers/news</i>	<i>d</i>	13.4	49.2
<i>no one close victim</i>	<i>e</i>	41.8	49
<i>victim</i>	<i>f</i>	44.4	48.6
<i>area reputation</i>	<i>g</i>	72.1	48.1
<i>CCTV</i>	<i>h</i>	62.9	31.6
<i>crimewatch</i>	<i>i</i>	11.8	21.9
<i>home security</i>	<i>j</i>	62.4	20.4
<i>neighbourhood watch</i>	<i>k</i>	44.7	15.2

4.14 There are direct correlations between Police patrols being a reason to feel safe, (76.4%); and lack of them a reason to feel unsafe, (69%); and similarly the activities or young people, (64.2%); and/or there being no problems from young people, (64.1%). Although for some of the issues raised there are direct correlations between the lack or presence of activities, provision or problems, this was not universally the case. Notable amongst these were newspaper stories about bravery making only 13.4% feel safe but stories about crime making 49.2% feel unsafe. Having appropriate home security makes people feel safe, (62.4%); but it not being present does not necessarily make them feel unsafe, (20.4%).

5.0 CLOSED CIRCUIT TELEVISION (CCTV)

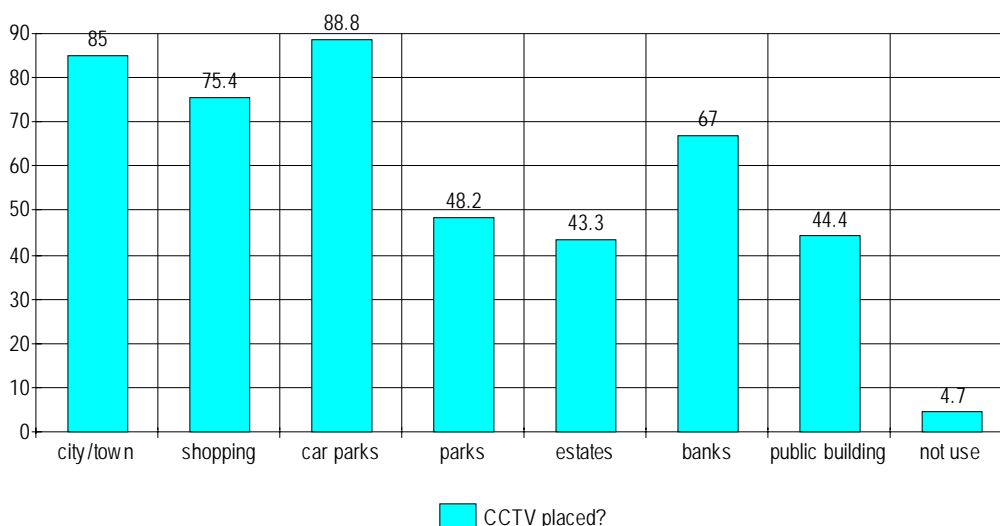
Questions 13 to 16 - 'Where do you think CCTV should be placed, if anywhere?' 'CCTV's are being used more and more in public places. What do you feel is the MOST important function of CCTV?' 'How effective do you think CCTV is?' 'Who in your opinion should decide where CCTV cameras are placed?' Appendix 2 - pages 71 to 79

5.1 Finally respondents were asked a series of questions relating to Closed Circuit Television, (CCTV). The first of these questions was on where they felt CCTV should be placed.

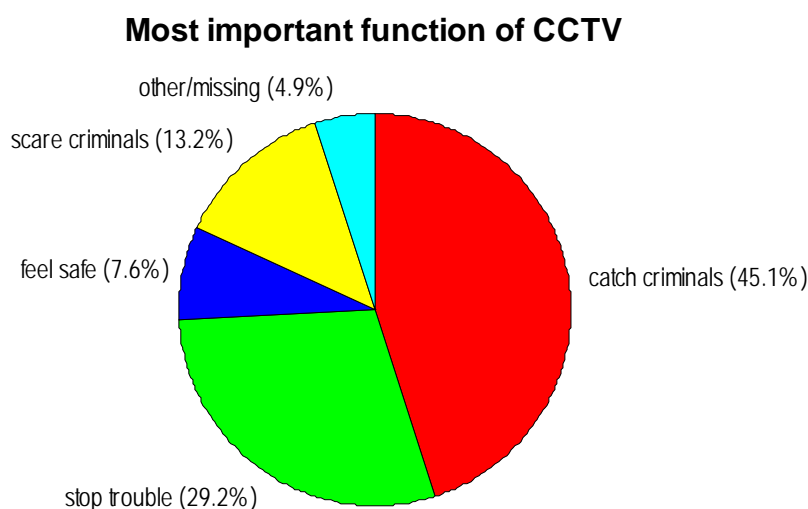
5.2 Mentioned by over 80% of all respondents was the placing of CCTV in town centres, (85%); and in car parks, (88.8%). Also mentioned by a substantial majority of respondents were in shops and shopping centres, (75.4%); and in banks and building societies, (67%).

5.3 Less than half of all respondents noted that CCTV should be placed in parks, (48.2%); on housing estates, (43.3%); or in public buildings, (44.4%). However, only 4.7% of respondents noted that they thought CCTV should not be used in public places.

CCTV placed?



5.4 Respondents were then asked what they thought was the MOST important function of CCTV. Almost half of all respondents, (45.1%), thought that the most important function was to 'help catch people who commit crime'. The second most mentioned function was that of 'to stop trouble from starting', (29.2%).



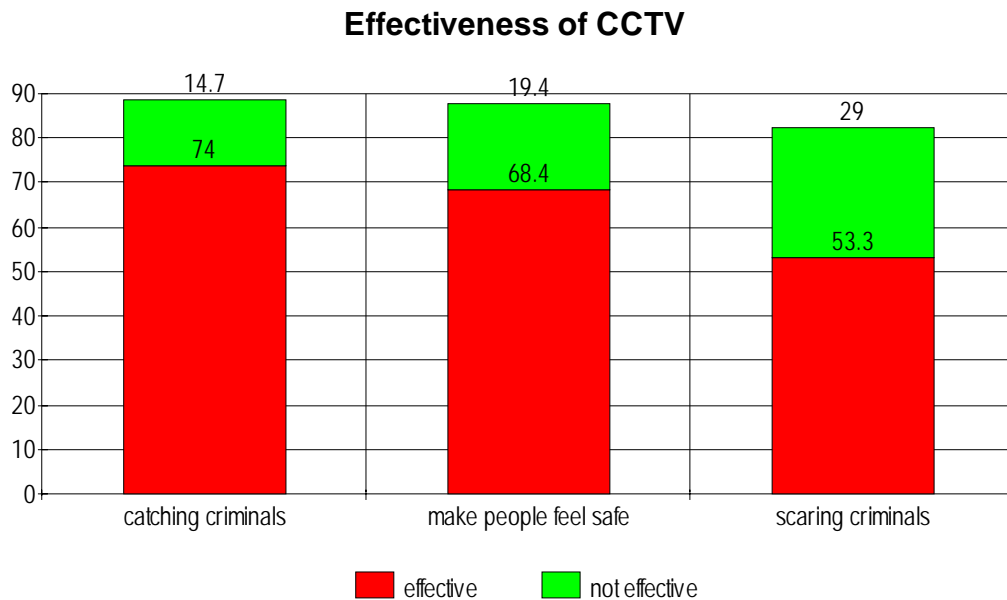
5.5 13.2% of respondents felt that CCTV's most important function was to prevent crime, ('to scare people who might commit crime'); and 7.6% thought it was 'to make people feel safe'. Only 0.8% of respondents felt that the most important function of CCTV was 'to spy on people'.

5.6 Just under three quarters of all respondents felt that CCTV is effective in catching criminals. 12.5% thought it was very effective and a further 61.5% that it is effective, (total - 74%). 14.7% feel that it is not effective and 7.7% gave a no opinion response with 3.5% not answering the question.

5.7 Rather fewer respondents feel that CCTV is effective in making people feel safe: 10.1% said that it is very effective and 58.3% said that it is effective, (68.4%). 19.4% felt that it is not effective with 12.2% giving a no opinion response or missing the question.

5.8 Only just over half of all respondents felt that CCTV is effective in

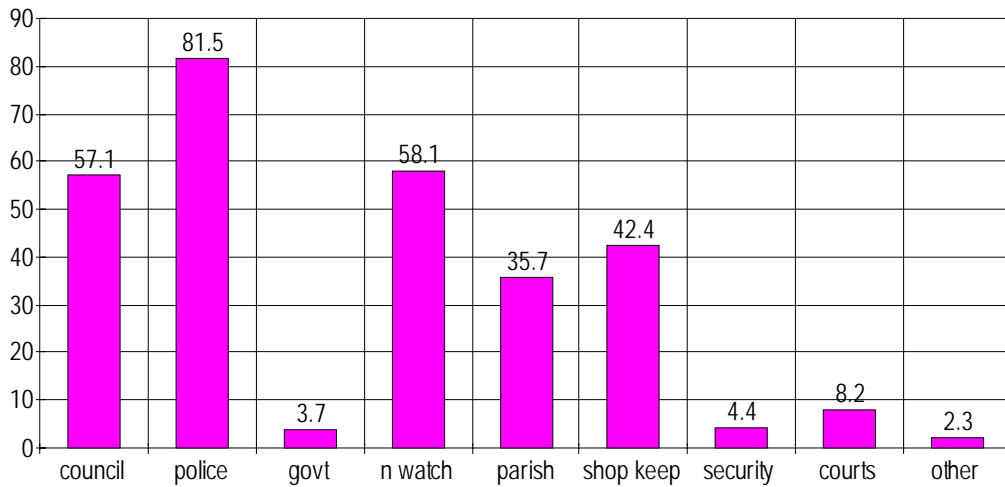
scaring off criminals. 9.3% feel it is very effective with 44% saying it is effective. However 29% were of the view that it is not effective. (12.6% no opinion, 5.1% missing data).



5.9 Finally respondents were asked who, in their opinion, should be responsible for deciding where CCTV cameras should be placed. (This was a multiple response question so the answers will not add up to 100%).

5.10 Overwhelmingly, the vast majority of respondents felt that the decisions on where CCTV should be placed should be taken by the Police with 81.5% of respondents considering this to be appropriate. Over half of all respondents also mentioned the local Council, (57.1%); and local neighbourhood watch groups, (58.1%).

Decide where cameras are placed



5.11 42.4% of respondents felt that local shop keepers should decide and 35.7% the Parish Councils.

5.12 Only 8.2% of respondents felt that the Courts should make these decisions and only a small minority considered that private security firms should be involved, (4.4%). The least favoured decision maker on where CCTV should be placed was the Government with only 3.7% considering that the Government should decide. 2.5% of respondents did not mention any of the above and 2.3% mentioned other decision makers.