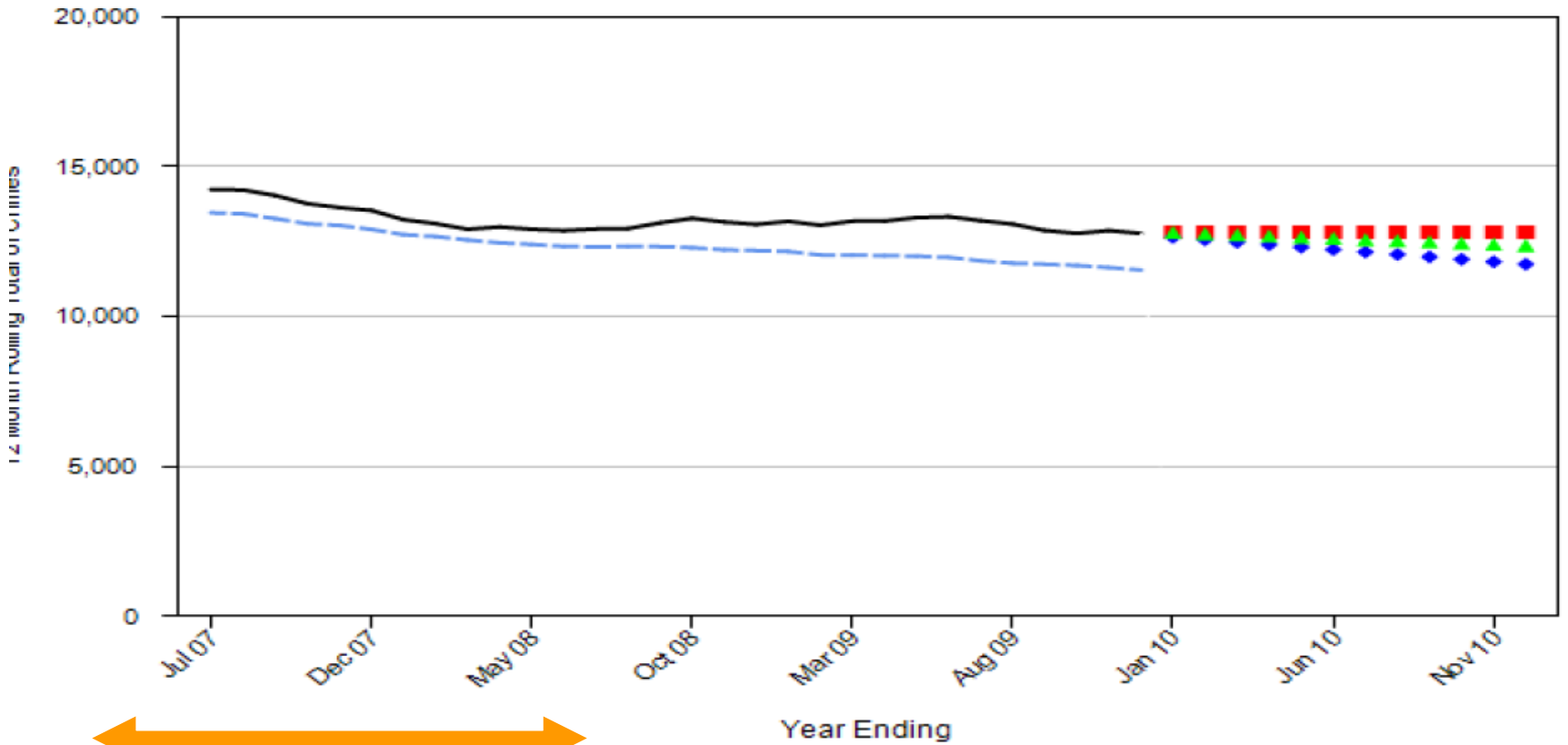


Charnwood Community Safety Partnership

PERFORMANCE DATA February 2010



All Crime

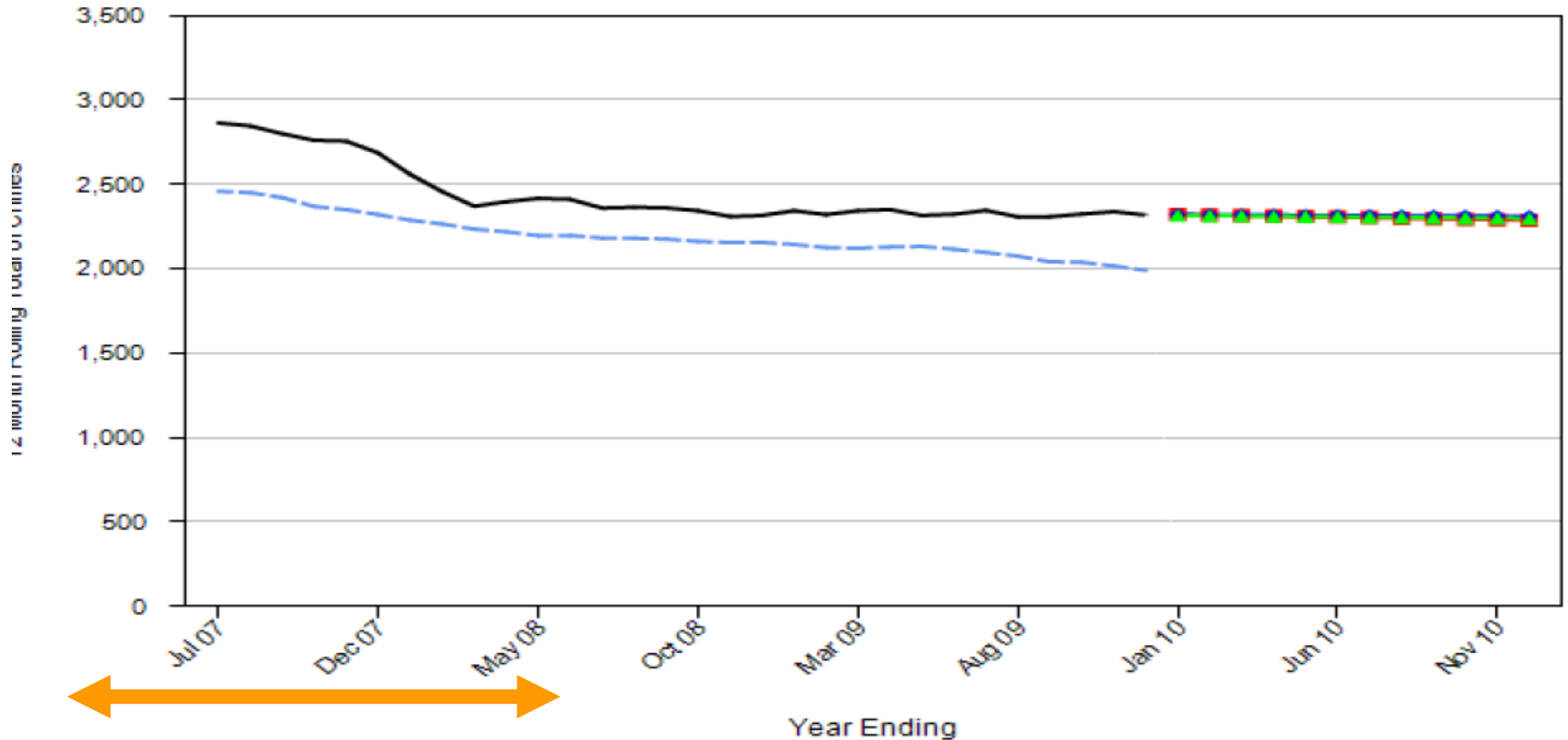


**Stayed the same
12/15**

**Charnwood Community
SAFETY PARTNERSHIP**



Serious Acquisitive Crime



— Actuals Trends Based on Last: — 3 data points — 6 data points — 12 data points - - - MSG

Stayed the same
12/15

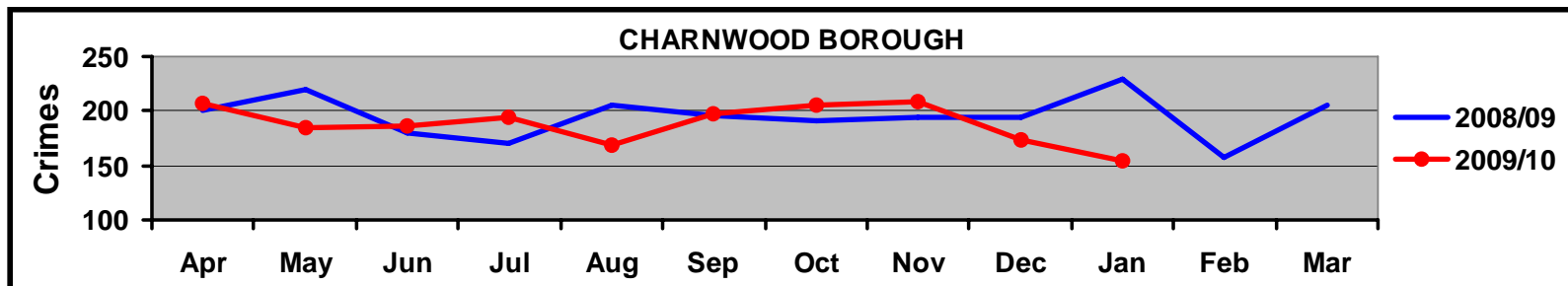


SERIOUS ACQUISITIVE CRIME

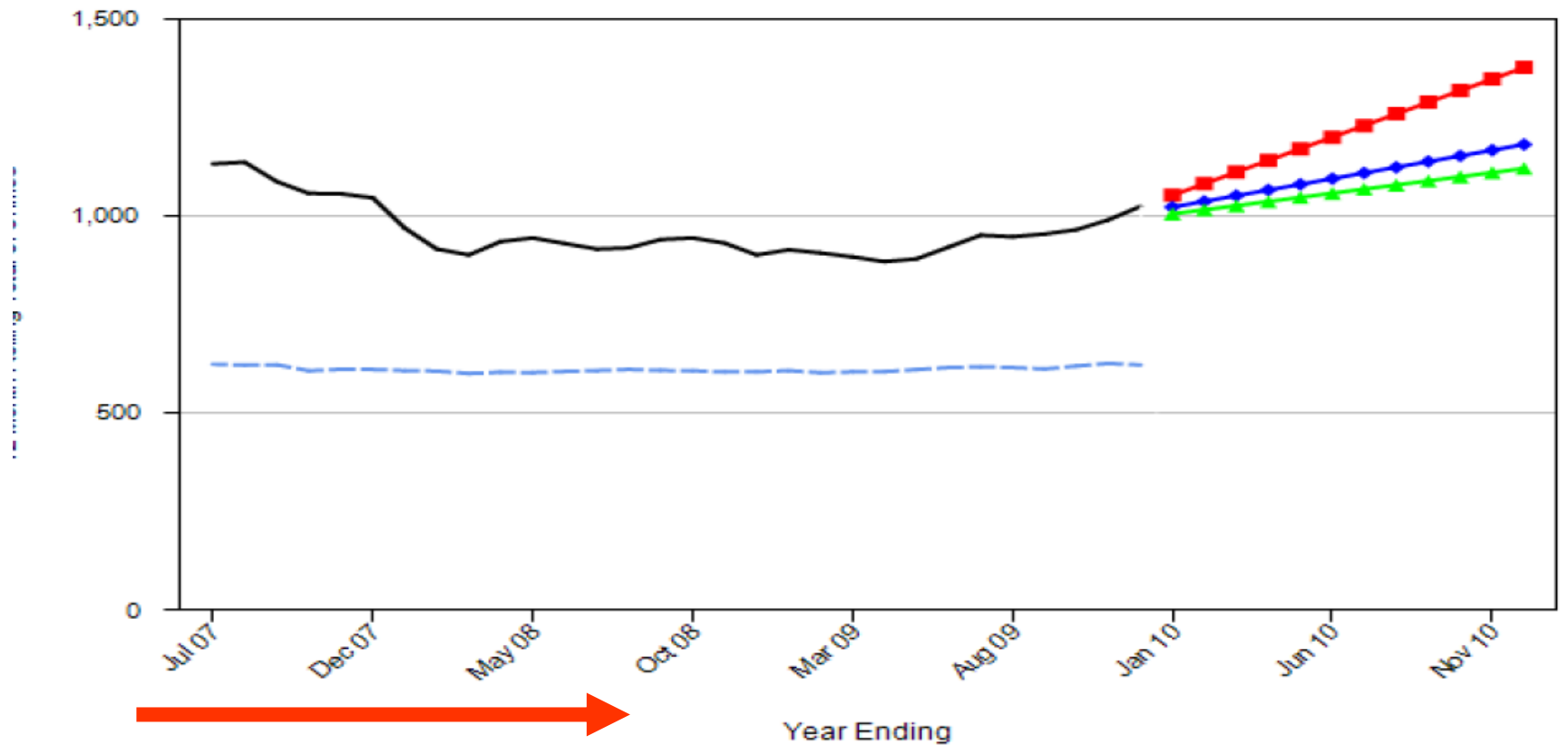
Target reduction = -3%

Charnwood year to date % change = **-4.8%** (-0.1%)

	Crimes YTD		% Change	Difference from Target
	2008/9	2009/10		
Charnwood LPU	928	878	-5.4	-22
Loughborough LPU	1095	1047	-4.4	-15
Charnwood Borough	2023	1925	-4.8	-37



Domestic Burglary



— Actuals Trends Based on Last: — 3 data points — 6 data points — 12 data points - - - MSG

14/15 to 15/15

Charnwood Community
SAFETY PARTNERSHIP

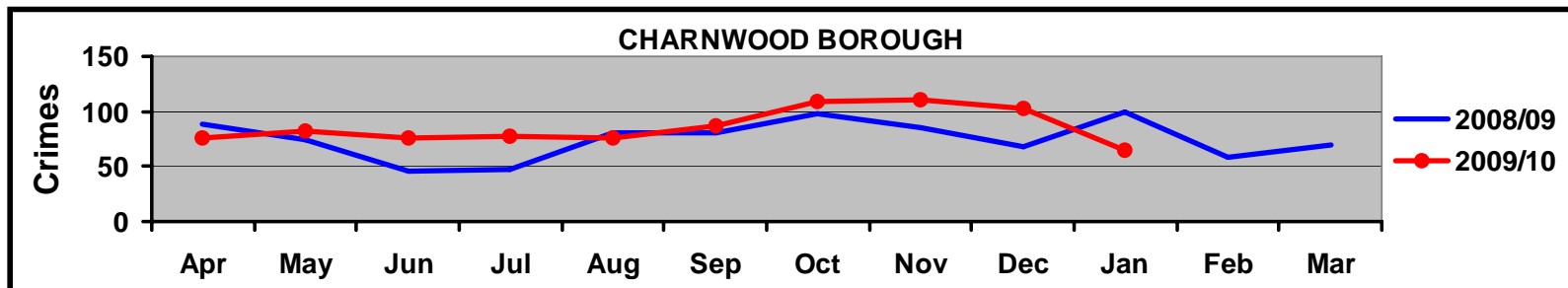


DOMESTIC BURGLARY

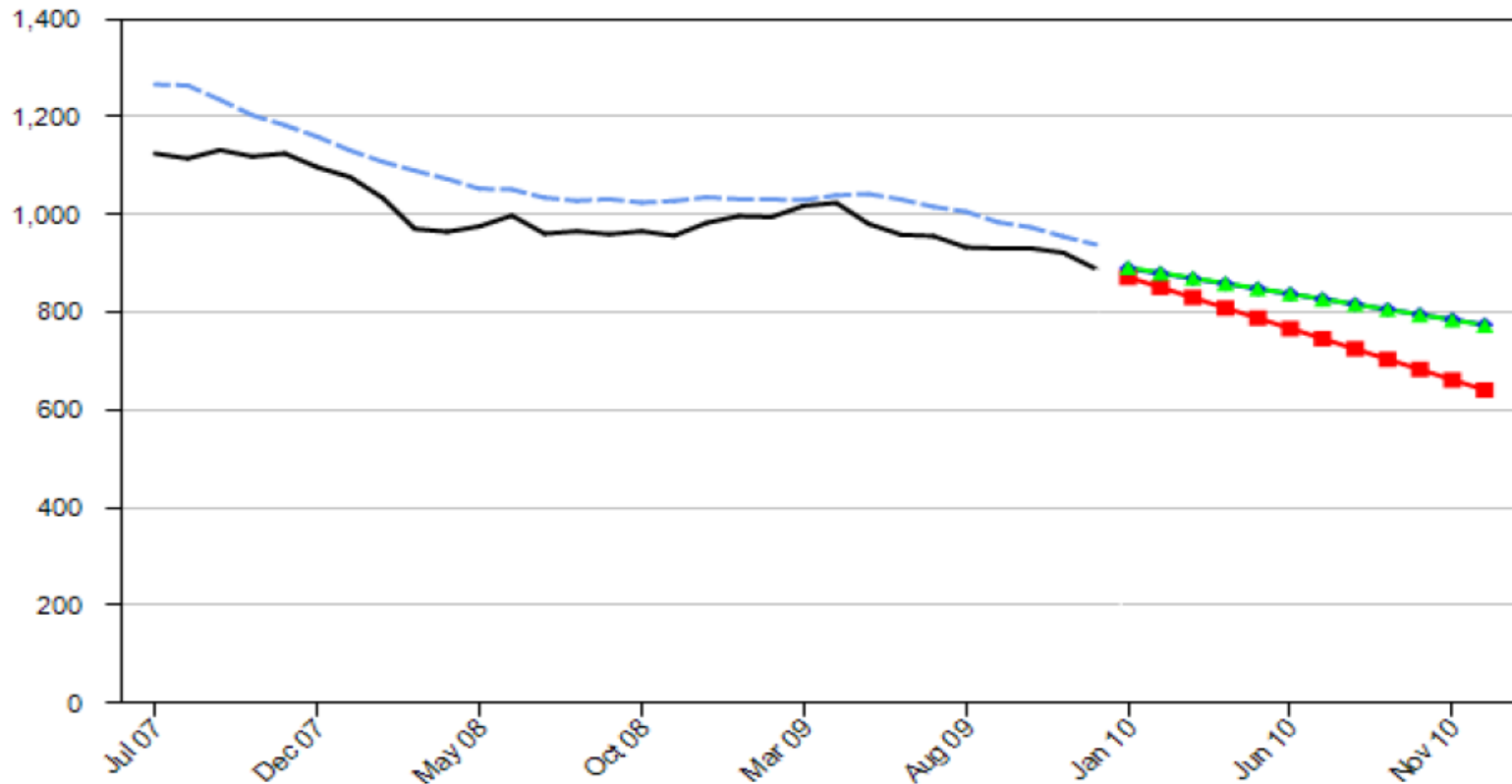
Target reduction = -3%

Charnwood year to date % change = **13.1%** (15.7%)

	Crimes YTD		% Change	Difference from Target
	2008/9	2009/10		
Charnwood LPU	325	389	19.7	74
Loughborough LPU	463	502	8.4	53
Charnwood Borough	788	891	13.1	127



Theft from Motor Vehicle



8/15 from 9/15

Year Ending

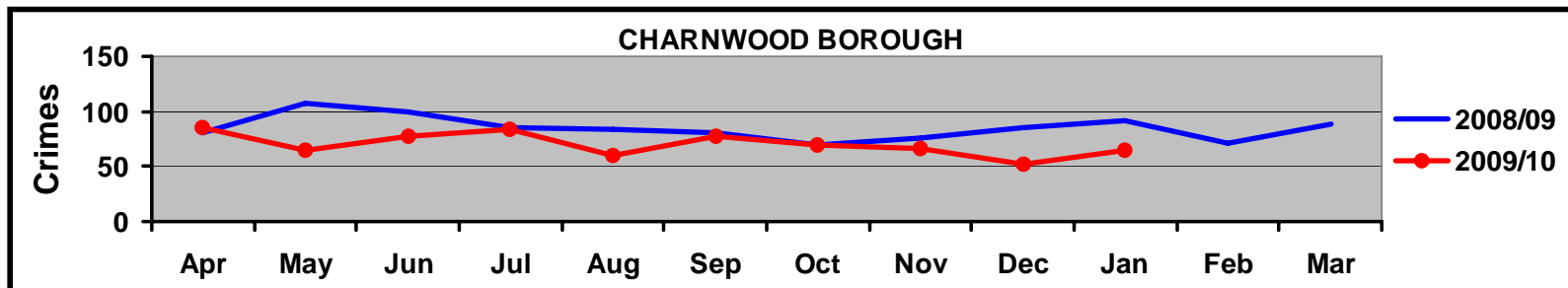


THEFT FROM MOTOR
VEHICLE

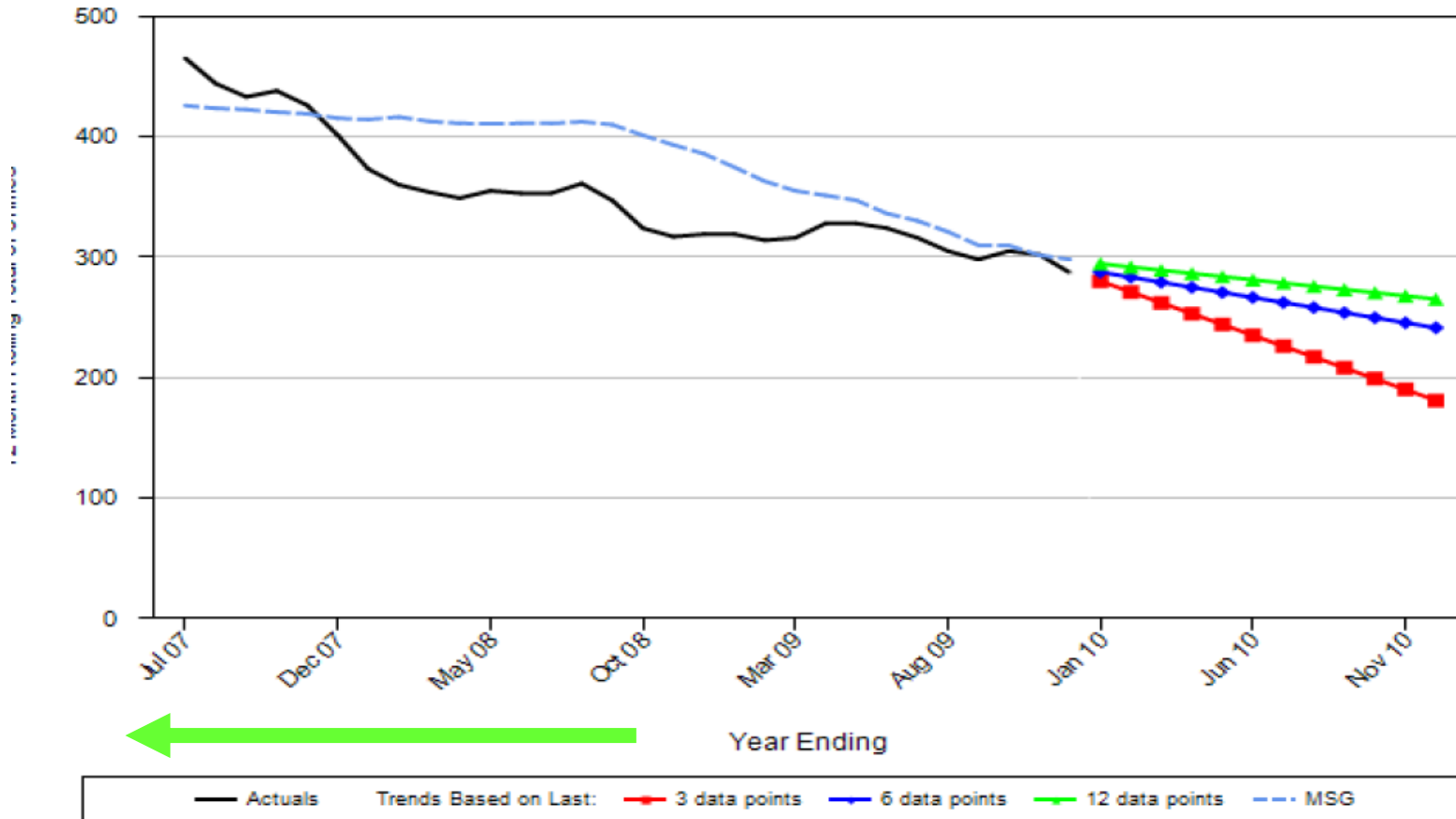
Target reduction = -3%

Charnwood year to date % change = **-18.3%** (-13.5%)

	Crimes YTD		% Change	Difference from Target
	2008/9	2009/10		
Charnwood LPU	447	346	-22.6	-88
Loughborough LPU	427	368	-13.8	-46
Charnwood Borough	874	714	-18.3	-134



Theft of a Motor Vehicle



8/15 from 9/15

Charnwood Community
SAFETY PARTNERSHIP

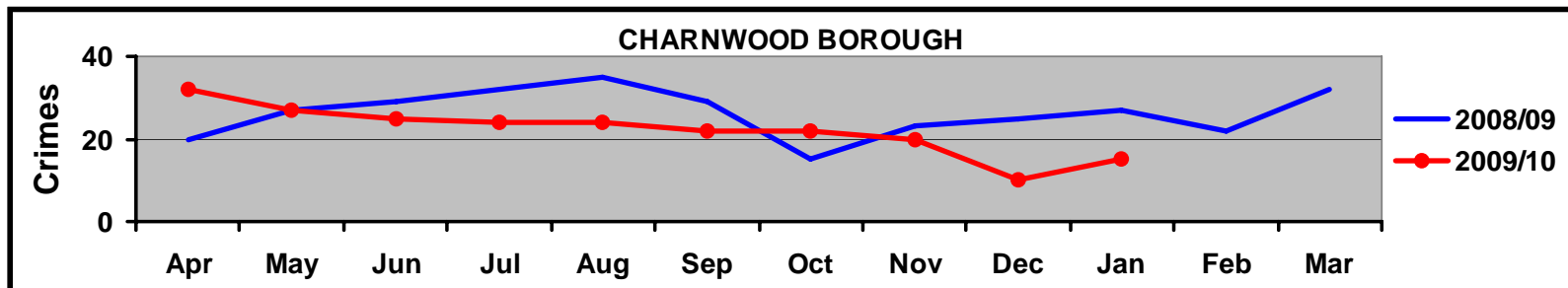


THEFT OF MOTOR VEHICLE

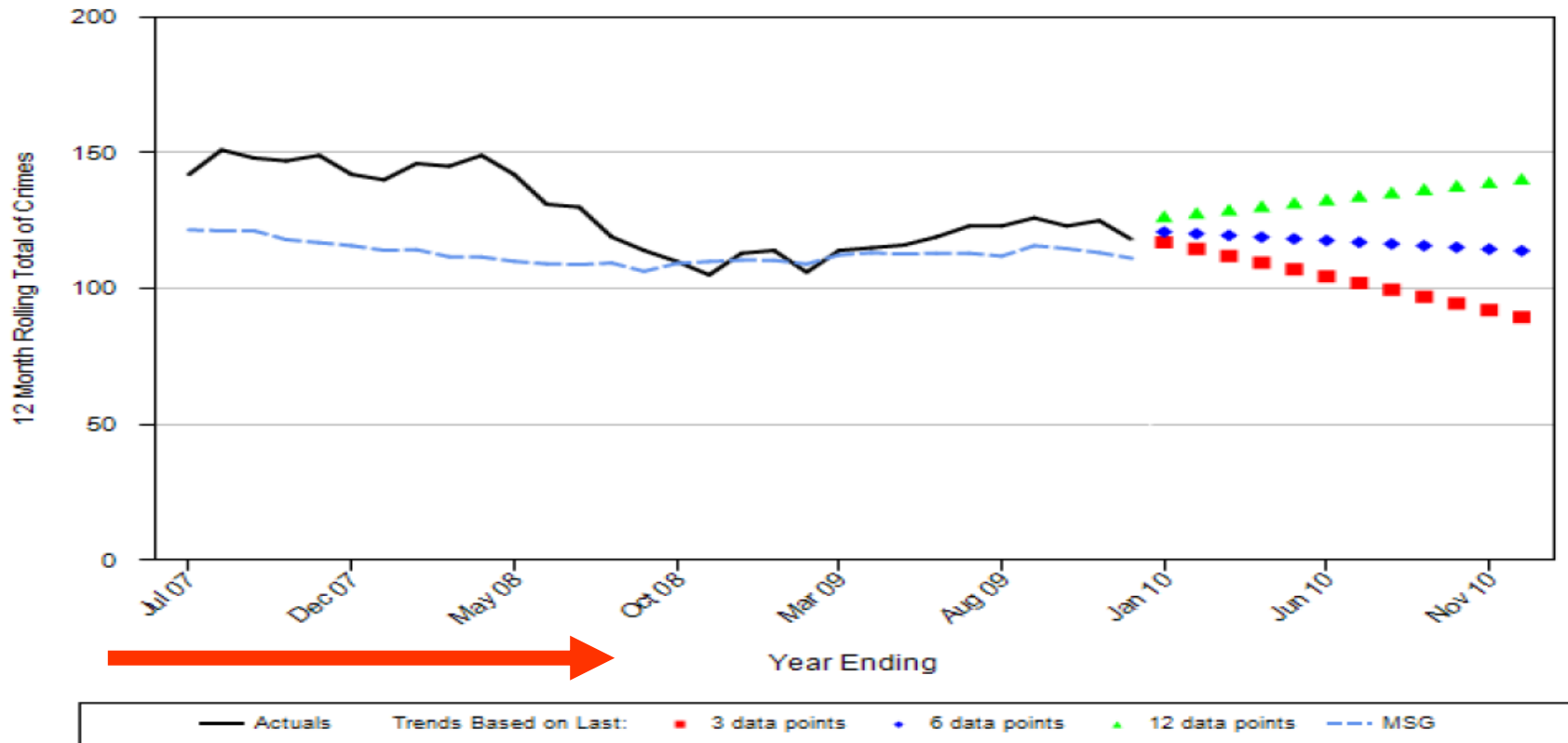
Target reduction = -3%

Charnwood year to date % change = **-16.5%** (-6.7%)

	Crimes YTD		% Change	Difference from Target
	2008/9	2009/10		
Charnwood LPU	135	109	-19.3	-22
Loughborough LPU	132	114	-13.6	-14
Charnwood Borough	267	223	-16.5	-36



Robbery



8/15 to 10/15

Charnwood Community
SAFETY PARTNERSHIP

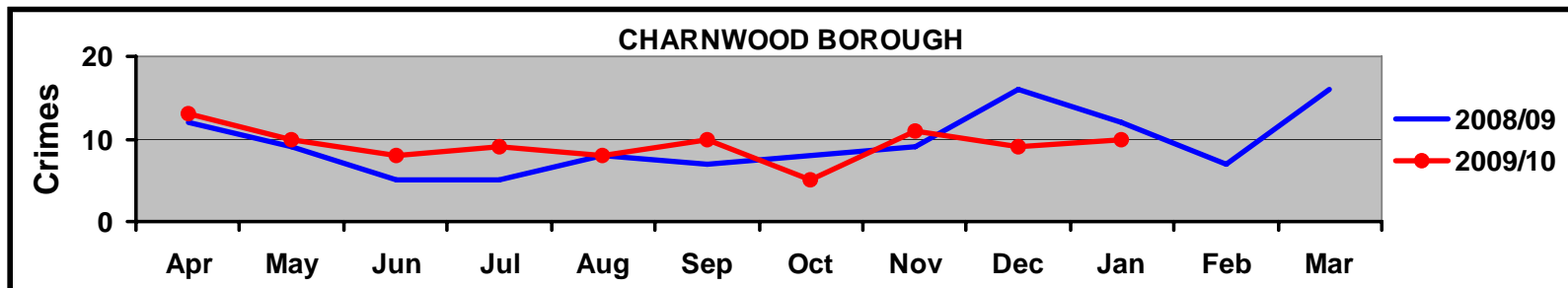


ROBBERY

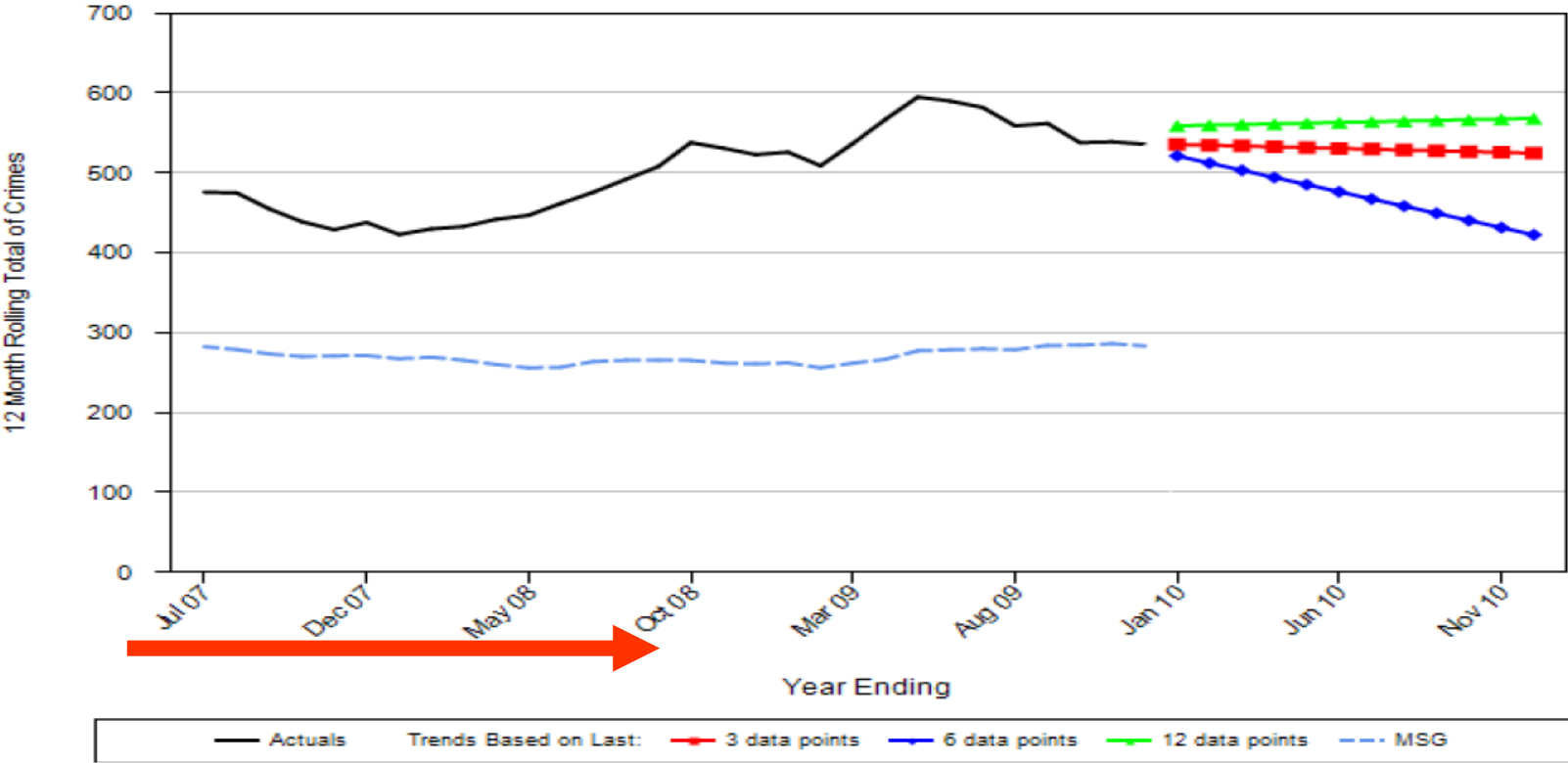
Target reduction = -3%

Charnwood year to date % change = **3.2%** (15.6%)

	Crimes YTD		% Change	Difference from Target
	2008/9	2009/10		
Charnwood LPU	21	34	61.9	14
Loughborough LPU	73	63	-13.7	-8
Charnwood Borough	94	97	3.2	6



Cycle Theft



Source: iQuanta 18-01-2010

12/15 to 15/15

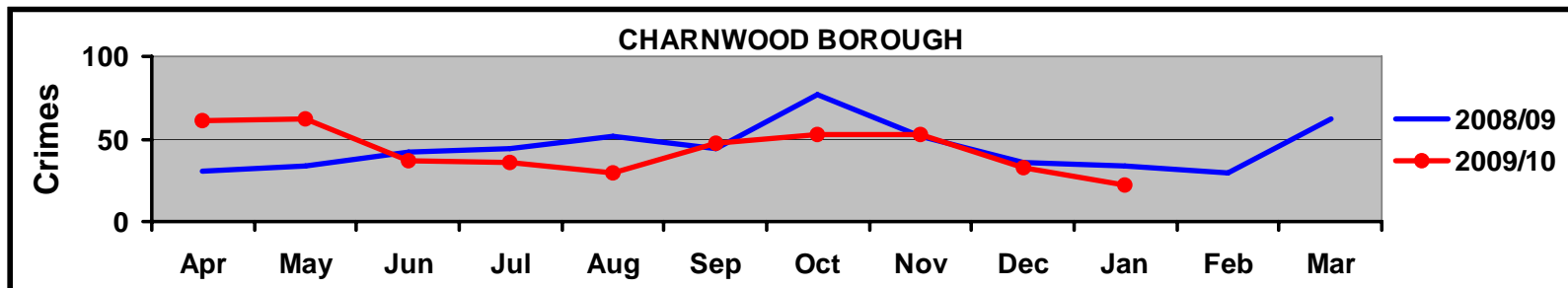


CYCLE THEFT

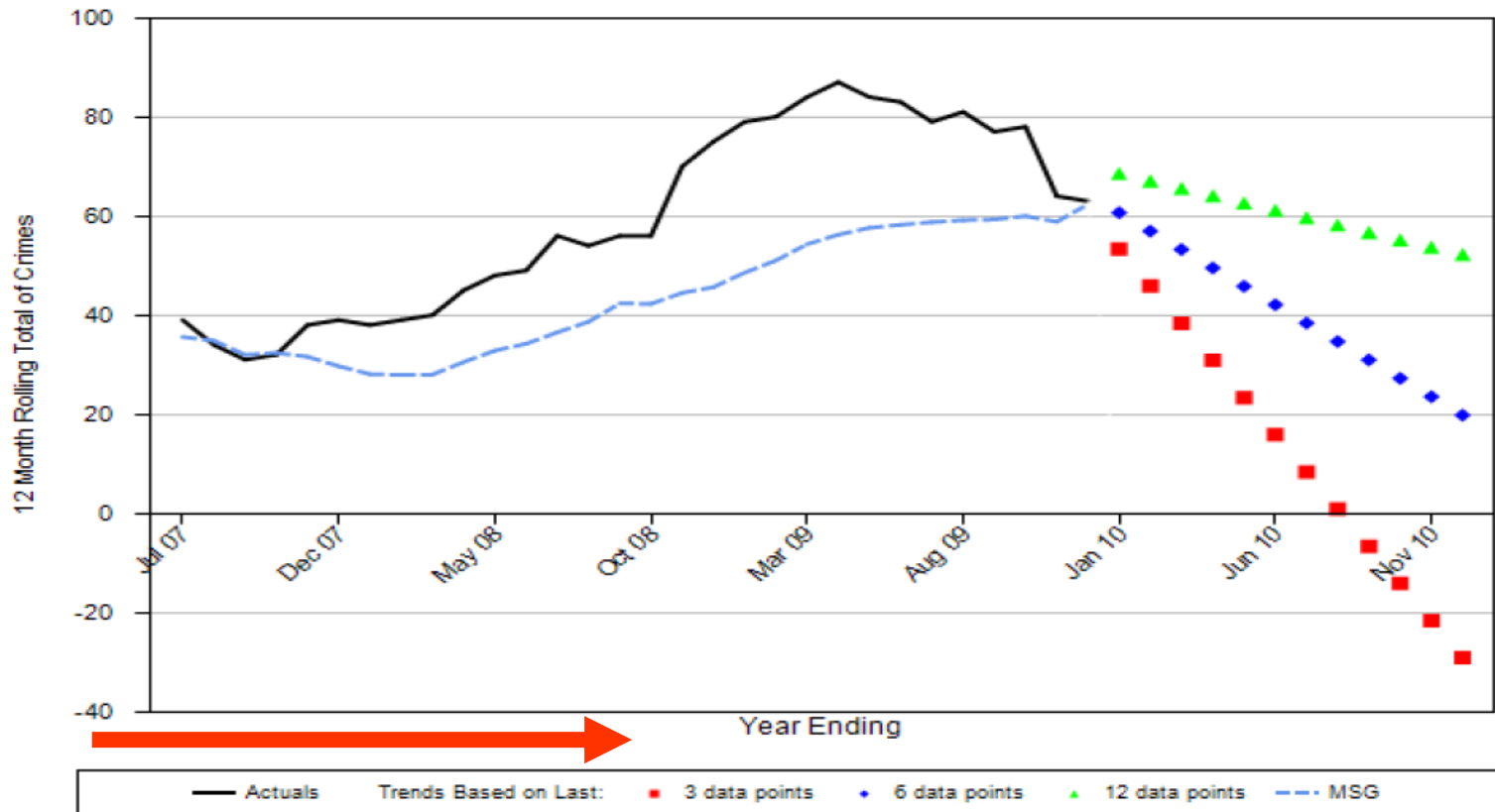
Target reduction = -3%

Charnwood year to date % change = **-1.8%** (0%)

	Crimes YTD		% Change	Difference from Target
	2008/9	2009/10		
Charnwood LPU	88	108	22.7	23
Loughborough LPU	365	337	-7.7	-17
Charnwood Borough	453	445	-1.8	6



Serious Violent Crime



8/15 to 9/15

Charnwood Community
SAFETY PARTNERSHIP

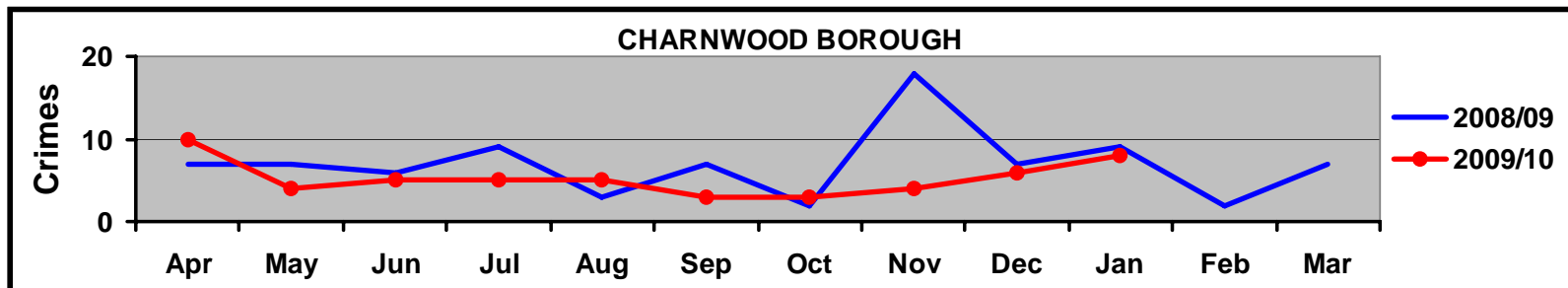


SERIOUS VIOLENT CRIME

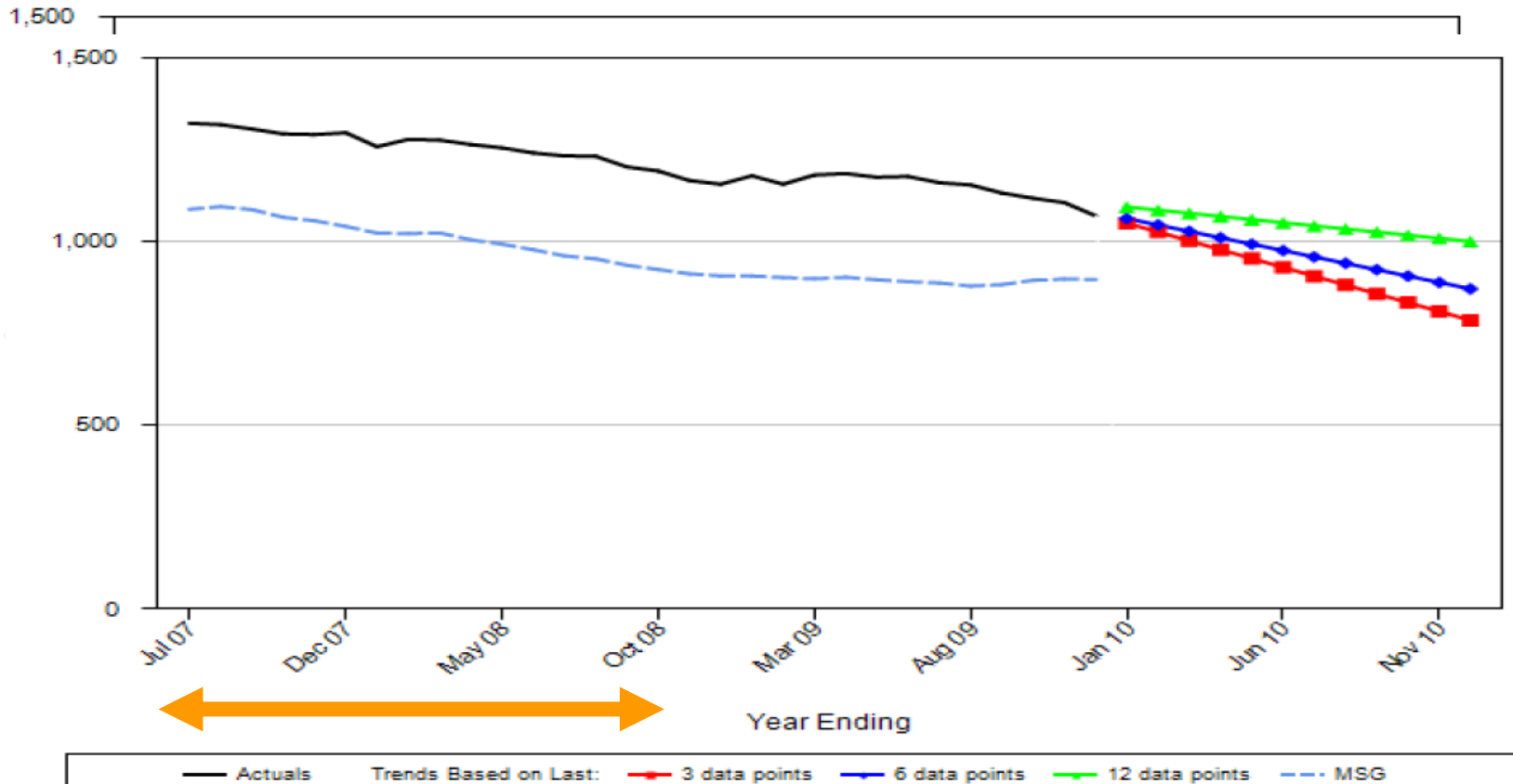
Target reduction = -5%

Charnwood year to date % change = **-25.3%** (-23.5%)

	Crimes YTD		% Change	Difference from Target
	2008/9	2009/10		
Charnwood LPU	26	24	-7.7	-1
Loughborough LPU	49	32	-34.7	-15
Charnwood Borough	75	56	-25.3	-15



Assault with Less Serious Injury



**Stayed the same
11/15**

**Charnwood Community
SAFETY PARTNERSHIP**

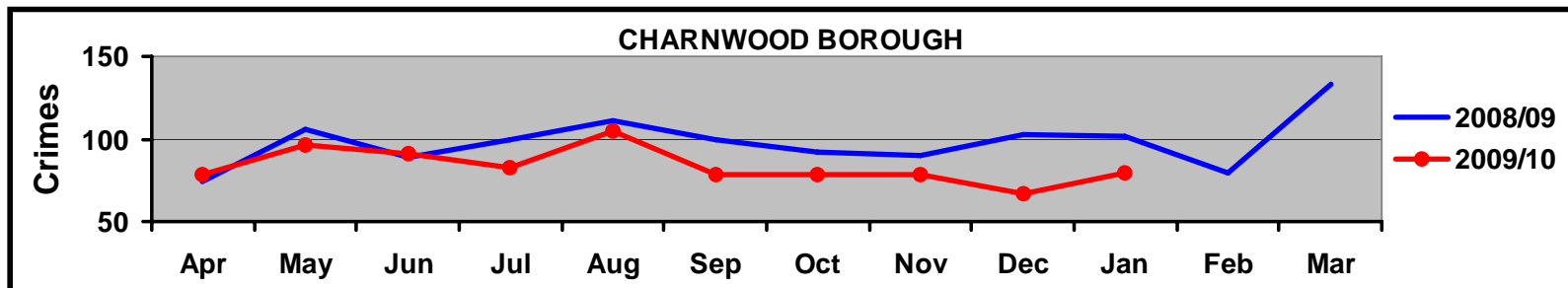


ASSAULT WITH LESS
SERIOUS INJURY

Target reduction = -3%

Charnwood year to date % change = **-14.5%** (-11%)

	Crimes YTD		% Change	Difference from Target
	2008/9	2009/10		
Charnwood LPU	374	312	-16.6	-51
Loughborough LPU	621	539	-13.2	-63
Charnwood Borough	995	851	-14.5	-114



HATE INCIDENTS:

- RACIAL (85.5%)
- RELIGIOUS (1.3%)
- HOMOPHOBIC (9.2%)
- AGE (0%)
- DISABILITY (3.9%)
- GENDER (0%)

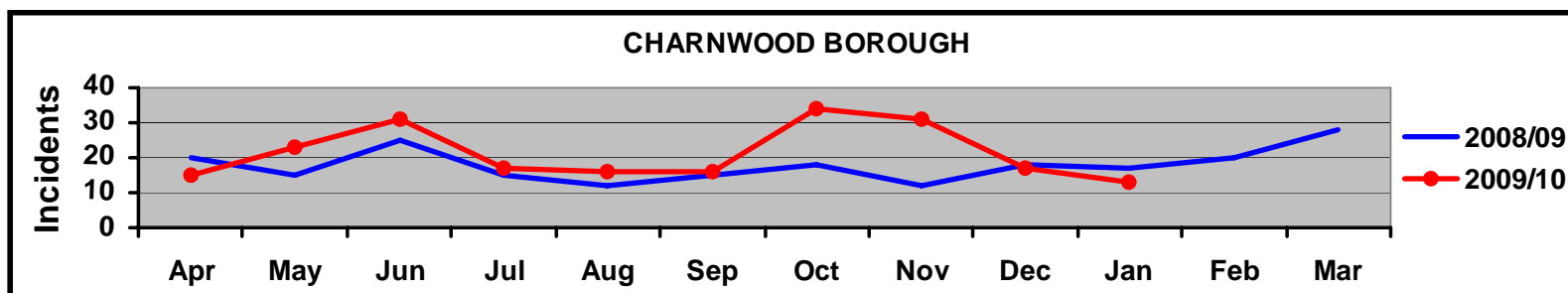
(Based on data for Apr – Oct 2009)



HATE INCIDENTS

Charnwood year to date % change = 27.5% (26.7%)

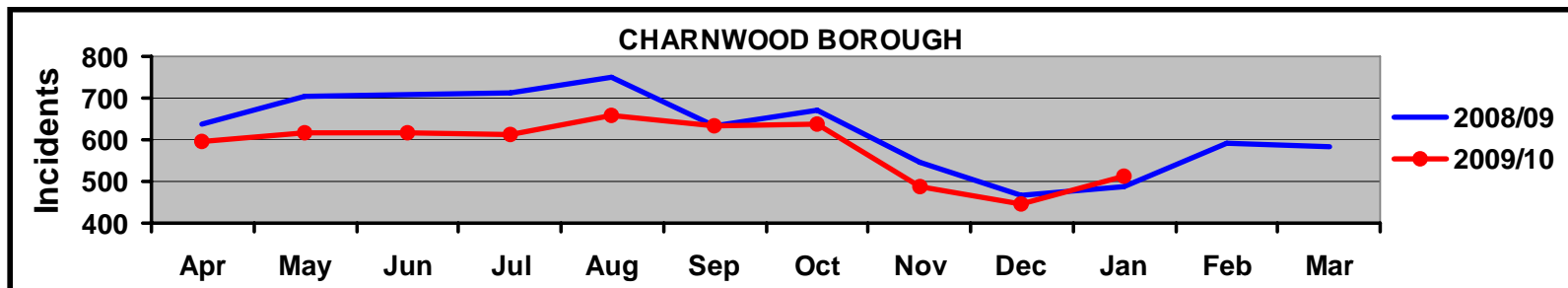
	Incidents YTD		% Change
	2008/09	2009/10	
Charnwood LPU	55	72	30.9
Loughborough LPU	112	141	25.9
Charnwood Borough	167	213	27.5



ANTISOCIAL BEHAVIOUR INCIDENTS

Charnwood year to date % change = -7.9% (-9.3%)

	Incidents YTD		% Change
	2008/9	2009/10	
Charnwood LPU	2702	2866	6.1
Loughborough LPU	3613	2949	-18.4
Charnwood Borough	6315	5815	-7.9



Charnwood Community
SAFETY PARTNERSHIP



Charnwood – Fire and Rescue Data

SI	Indicator		2009/10				YTD
			Apr - Jun	Jul - Sep	Oct - Dec	Jan - Mar	
1.1	The number of primary fires	Actual	78	70	54		202
		Target	70	61	58		189
1.2	The number of secondary fires	Actual	120	78	53		251
		Target	99	88	43		230
1.3	The number of RTC's	Actual	21	15	25		61
		Target	20	24	30		74
1.6	The number of fires in domestic properties	Actual	26	21	19		66
		Target	17	16	17		50
1.7	The number of fires in non-domestic properties	Actual	11	8	9		28
		Target	11	5	9		25
1.8	The number of deliberate primary fires (not in vehicles)	Actual	13	20	4		37
		Target	16	15	14		45



Charnwood – Fire and Rescue Data

1.9	The number of deliberate primary fires (in vehicles)	Actual	19	17	14		50
		Target	19	16	13		48
1.10	The number of deliberate secondary fires (not in vehicles)	Actual	92	63	45		200
		Target	51	55	30		136
1.1	The number of deliberate secondary fires (in vehicles)	Actual	1	0	0		1
		Target	2	1	0		3
1.1	The number of accidental fires in domestic properties	Actual	21	17	16		54
		Target	14	15	17		46
2.5	The % of dwelling fires where no smoke alarm was fitted	Actual	38.50%	42.90%	42.10%		40.90%
		Target	40.00%	40.00%	40.00%		40.00%
2.6	The % of dwelling fires where a smoke alarm was fitted but did not activate	Actual	7.70%	0.00%	10.50%		6.10%
		Target	13.50%	13.50%	13.50%		13.50%



HEADLINE QUESTION:

‘Police and Local Councils are dealing with ASB and crime issues that matter in your area’

% Respondants who agreed

Charnwood LPU = 65% (67%)

Loughborough LPU = 60% (61%)

Charnwood Borough = 62% (64%)



THE END

Charnwood Community
SAFETY PARTNERSHIP

