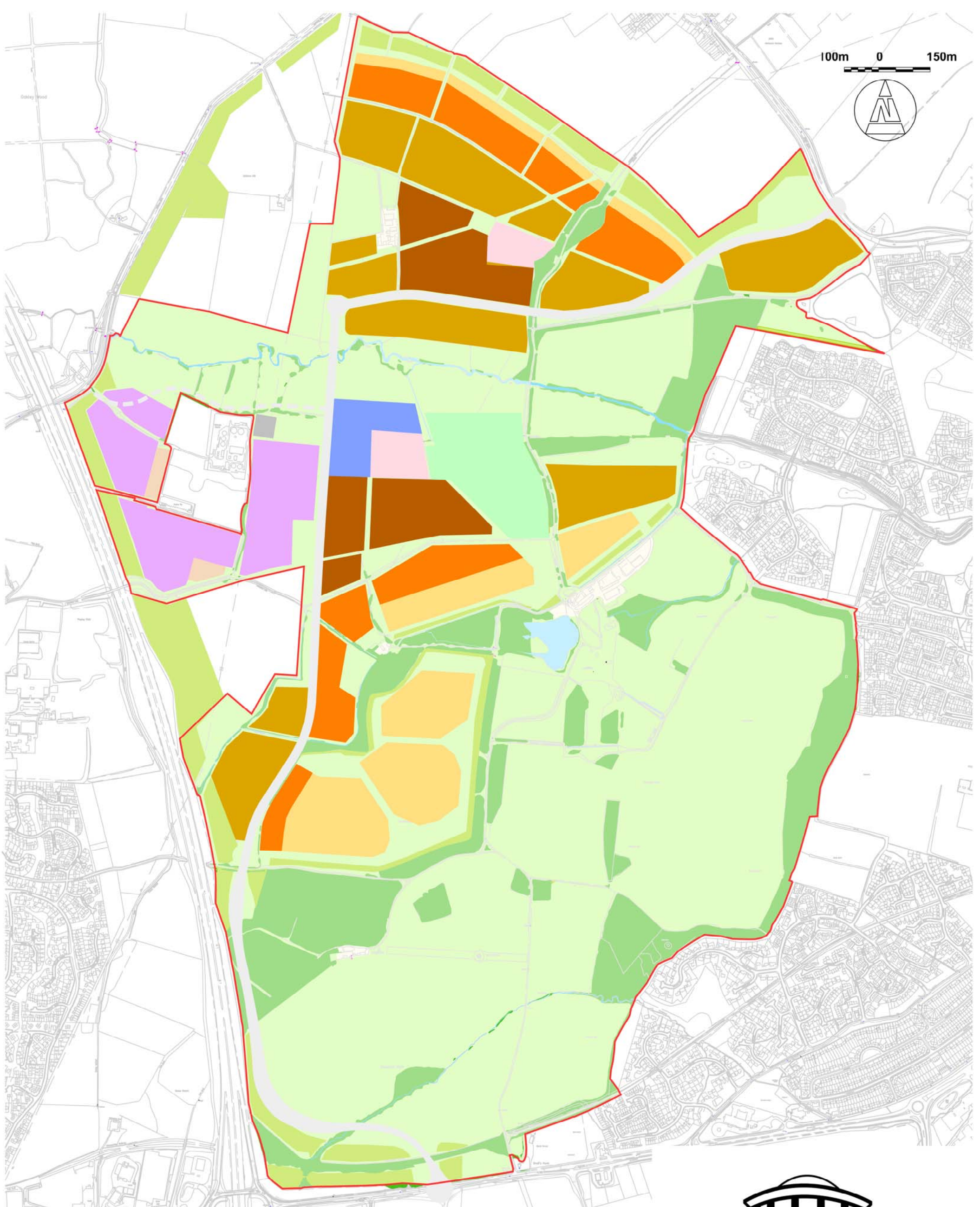


100m 0 150m



	<b>Application Boundary</b>		<b>Primary School</b>
<b>Residential Densities:</b>			<b>Community Hub</b>
	<b>Low</b>		<b>Employment</b>
	<b>Low Medium</b>		<b>Sub-station</b>
	<b>Medium High</b>		<b>Traveller and Showman sites</b>
	<b>High</b>		

PROPOSED DEVELOPMENT	PROPOSED BUILDING HEIGHT FROM GROUND LEVEL TO RIDGE LINE EXCLUDING ANY POINT FEATURES
Residential Development: Low Density Low Medium Density	2 Storey properties up to 10m 2.5 Storey properties up to 10m
Residential Development: Medium High Density High Density	2.5 Storey properties up to 10m 2 Storey properties up to 10m 3 Storey properties up to 12m
Primary School	1-2 Storeys up to 12m
Community Hub Buildings	A maximum of 3 Storeys up to 13m
Employment Development	Buildings up to 12m
Sub-station	132Kv to 11Kv infrastructure including terminal towers and also single storey buildings up to 5m
Traveller and Showman sites	Single storey buildings up to 5m Showman site to include storage of equipment up to 5m

3,200 dwellings 101.2Ha @ an average residential density of 31.6 dph.



**PARAMETERS PLAN C: Residential Density and building heights**

Scale 1:5,000 @ A1  
1:10,000 @ A3

**fpcr Drawing Reference No. 1005/L/203 Rev: A**

**William Davis Ltd**

**Persimmon Homes**