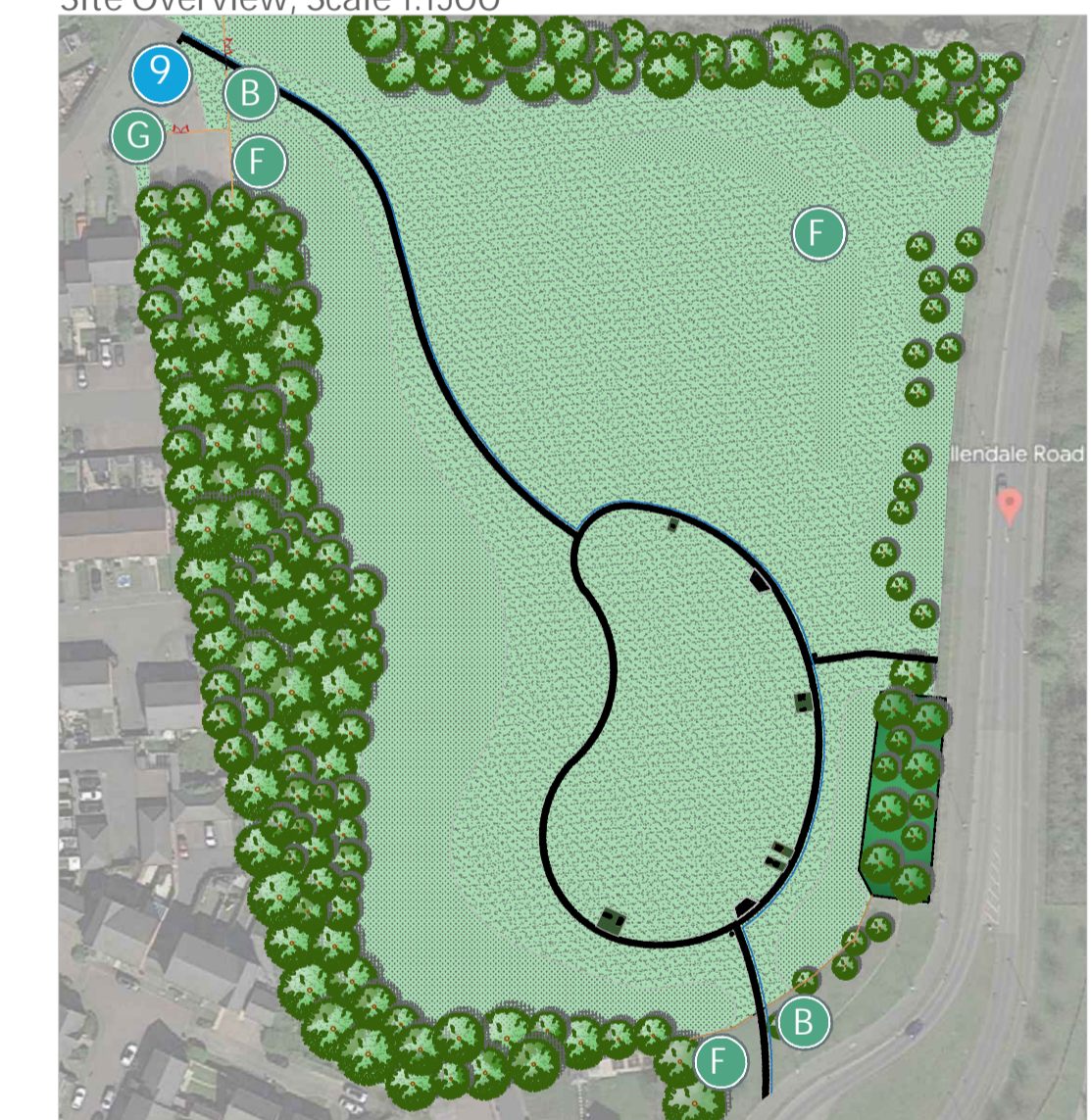


- A** Tarmac laid over MOT type 1 and defined with PCC edging
- B** Motorcycle Prohibiting Gate
- C** Kissing Gate
- D** Proposed Conduit subject to site survey 'Potential future project'
- E** Softworks by Others
- F** Plastic knee rail fencing
- G** Vehicle Barrier Gate
- H** Grass matting 'ecosmart' safer surfacing to areas where CFH is greater than 0.6m or required to reduce wear. Premium Grade Turf laid beneath.

Site Overview, Scale 1:1500



E	22/09/23	Revised to client comments	LB
D	14/09/23	Tarmac Pads Added	LB
C	23/08/23	Design Amendments	CF
B	14/08/23	Design Amendments	CF
A	26/07/23	Design Amendments	CF
Revision			



1 Sunshine Gym Double Health Walker Code: BX/SG 3008
 2 Sunshine Gym Sky Stepper Code: BX/SG 3000
 3 Sunshine Gym Combi Pull Down and Power Push Double Sit Up Bench Code: BX/SG 3001
 4 Sunshine Gym Double Sit Up Bench Code: BX/SG 3001
 5 Sunshine Gym Arm & Pedal Bicycle Code: BX/SG 3017
 6 Sunshine Gym Double Slalom Skier Code: BX/SG 3002
 7 Sunshine Gym Double Strength Challenger Code: BX/SG 3013
 8 Broxap Garthdee Picnic Unit with Wheelchair Access Code: BX17 4016-2
 9 Broxap Derby Standard Litter Bin 120L Code: BX45G 2550
 10



Images are an indicative representation, colours and specification subject to variation

