

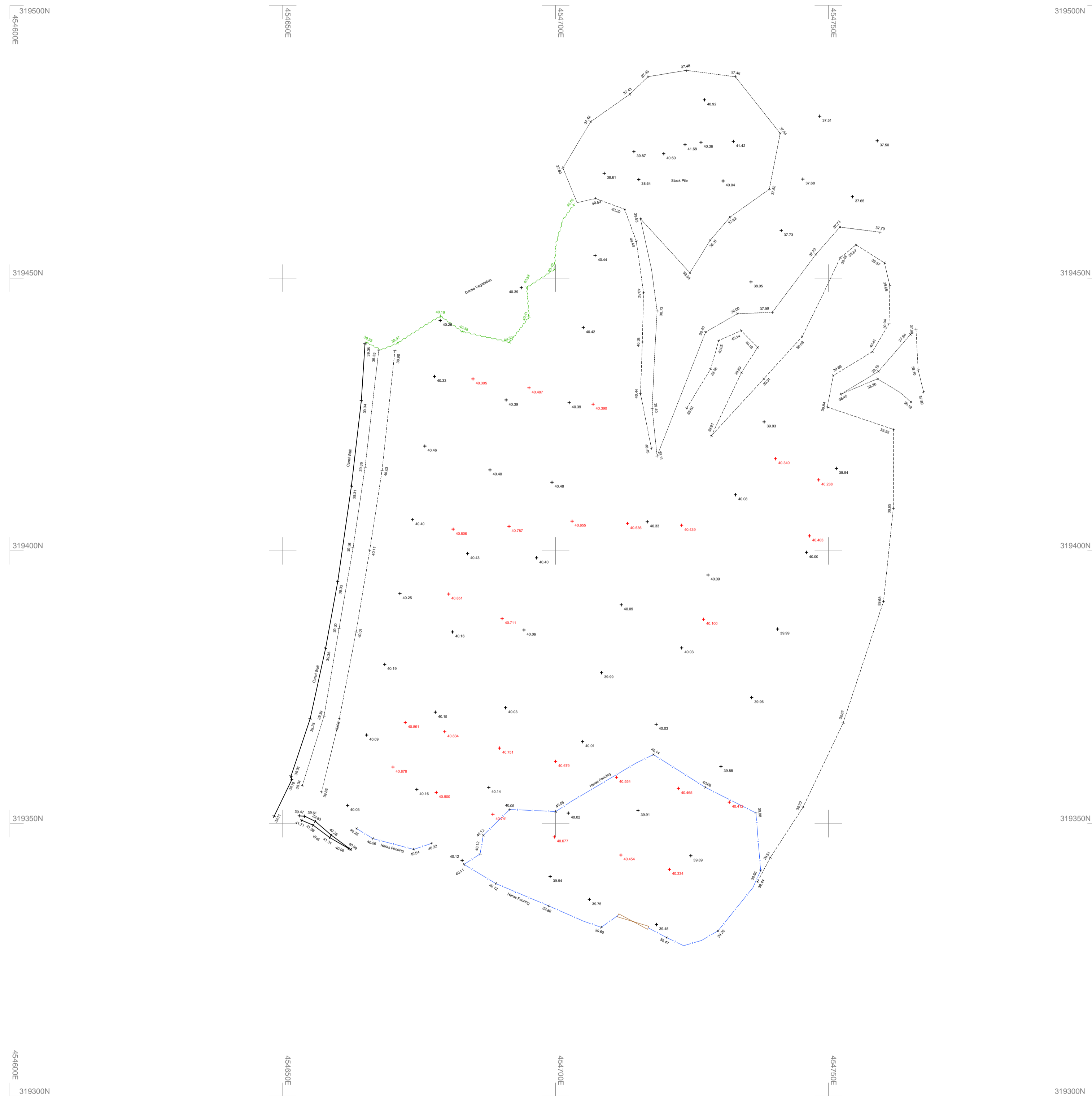
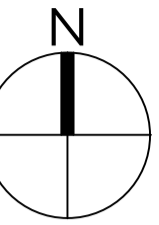
Sketch proposals are for illustrative purposes only & as such are subject to detailed site investigation including ground conditions / contaminants, drainage, design & planning/density negotiations. Sketch proposals may be based upon enlargements of OS sheets & visual estimations of existing site features, accuracy will therefore need to be verified by survey. Sketch proposals have not been considered in respect of CD4 Regulations.

This drawing and the building works depicted are the copyright of Staniforth Architects Ltd. and may not be reproduced or amended except by written permission. No liability will be accepted for amendments made by other persons.

# PRELIMINARY



Revision	Date	Initials	Notes
A	29.09.22	DT	Minor amendments



## STANIFORTH ARCHITECTS

### Site coordinates

The Warehouse  
1A Stamford Street  
Leicester LE1 6NL  
0116 2853775  
www.staniforth.co.uk

Drawing Status:  
Cad Reference: E2391-P001  
Drawn: DT  
Checked: DT  
Date: 27-09-2022  
Scale: 1:500@A1

Project No.	Drawing No.	Revision
Windmill Road Loughborough	E2391 P001	A