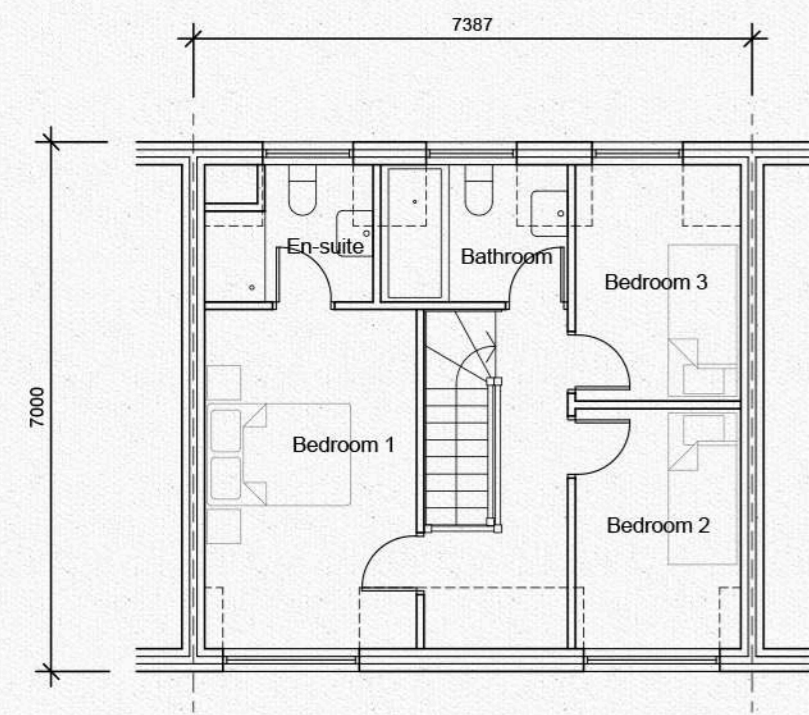


NOTES:

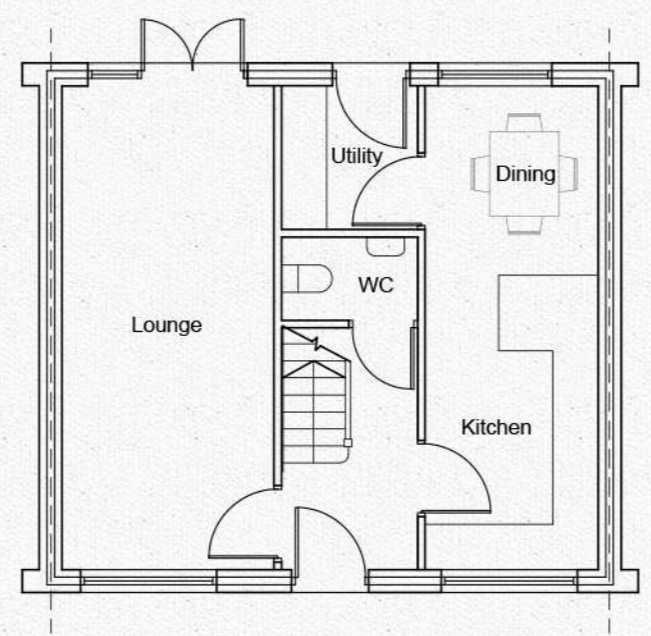
BEDROOMS: 3

- MATERIALS GENERALLY:**
- Roof plain tiles
 - Walls facing brick/ render
 - Chimney facing brick
 - Window heads flat lintels
 - Window cills brick cills
 - Joinery painted/ stained timber
 - Rainwater goods round black plastic
 - Rooflight Conservation style

Materials shown are indicative only. For plot specific material details please refer to drawing no. 2930 - 07 Materials Plan



First Floor Plan



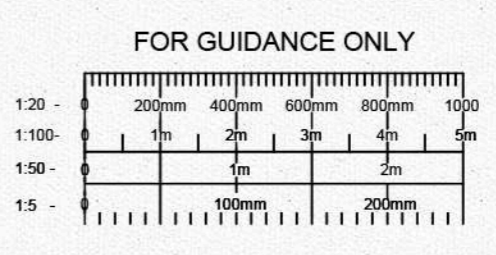
Ground Floor Plan



Front Elevation



Rear Elevation



Rev	Details	Date	Checked By

PLANNING

BROWNHILL HAYWARD BROWN
CHARTERED ARCHITECTS

GEORGIAN HOUSE 24 BIRD STREET LICHFIELD STAFFS WS13 6PT
TEL: 01543 254357 FAX: 01543 416540 e-mail: mail@hbharchitects.co.uk

Client **Barwood Homes Ltd**

Project **Broadnook Garden Suburb**

Title **Cadbury Housetype**

Scale	Date	Drawn By	Checked By	Drawing Number	Revision
1:100 @ A2	Feb 16	MJM	MW	2930-112	B

The copyright of this drawing and design is vested in the Architect and must not be copied or reproduced without written consent. All dimensions given are to be verified on site by the responsible contractor. Do not scale dimensions from this drawing.

ISO 9001 REGISTERED FIRM ISO 14001 REGISTERED FIRM