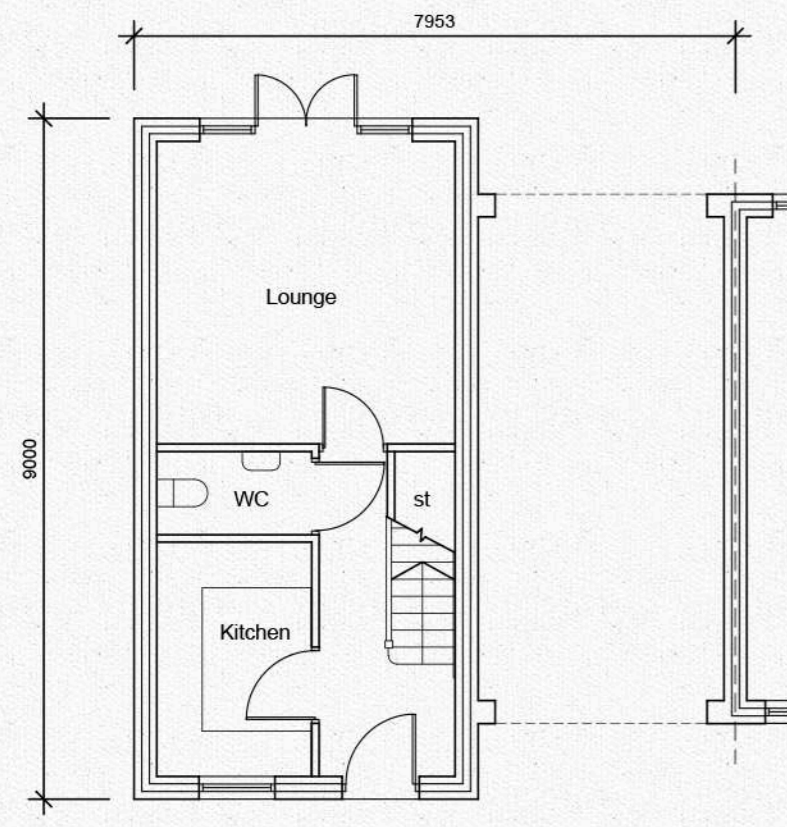


NOTES:

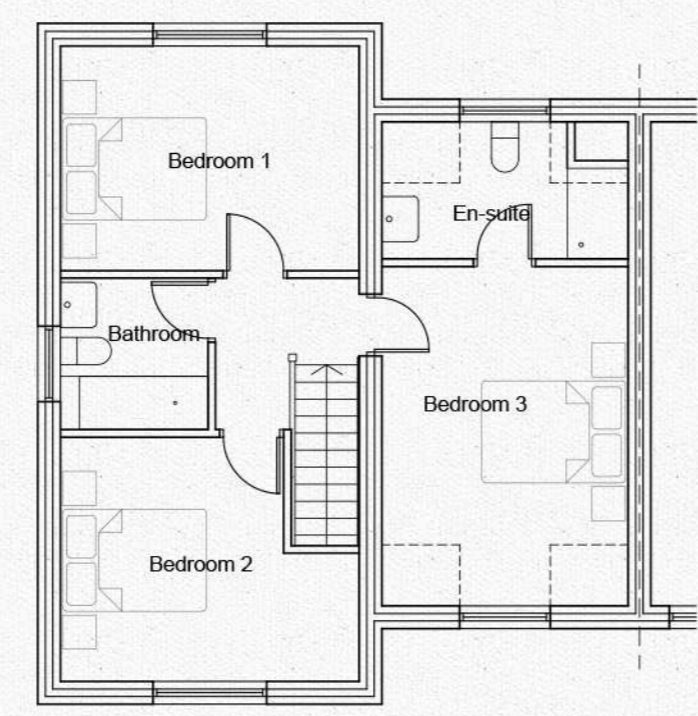
BEDROOMS: 3

- MATERIALS GENERALLY:**
- Roof plain tiles
 - Walls facing brick/ render/ tile hanging
 - Chimney facing brick
 - Window heads flat lintels
 - Window cills brick cills
 - Joinery painted/ stained timber
 - Rainwater goods round black plastic
 - Rooflight Conservation style

Materials shown are indicative only. For plot specific material details please refer to drawing no. 2930 - 07 Materials Plan



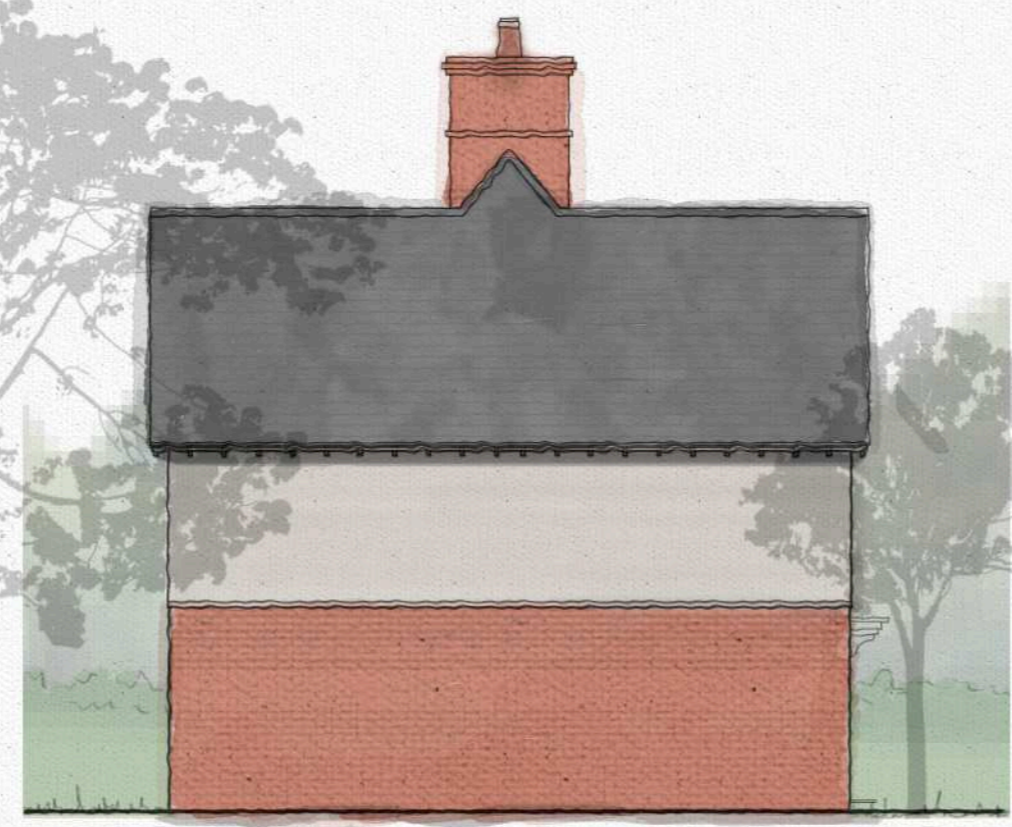
Ground Floor Plan



First Floor Plan



Front Elevation

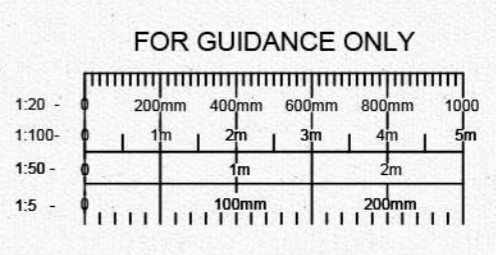


Side Elevation



Rear Elevation

8.6m ridge height
4.7m eaves height



Rev	Details	Date	Checked By
-----	---------	------	------------

PLANNING

BROWNHILL HAYWARD BROWN
CHARTERED ARCHITECTS
GEORGIAN HOUSE 24 BIRD STREET LICHFIELD STAFFS WS13 6PT
TEL: 01543 254357 FAX: 01543 416540 e-mail: mail@hbharchitects.co.uk

Client **Barwood Homes Ltd**
Project **Broadnook Garden Suburb**

Title Edwin Housetype					
Scale	Date	Drawn By	Checked By	Drawing Number	Revision
1:100 @ A2	Feb 16	MJM	MW	2930-113	B