

NOTES:

BEDROOMS: 5

- MATERIALS GENERALLY:**
- Roof plain tiles
 - Walls facing brick/ tile hanging
 - Chimney facing brick
 - Window heads brick arches
 - Window cills painted stone
 - Joinery painted/ stained timber
 - Rainwater goods round black plastic
 - Rooflight Conservation style

Materials shown are indicative only. For plot specific material details please refer to drawing no. 2930-07 Materials Plan



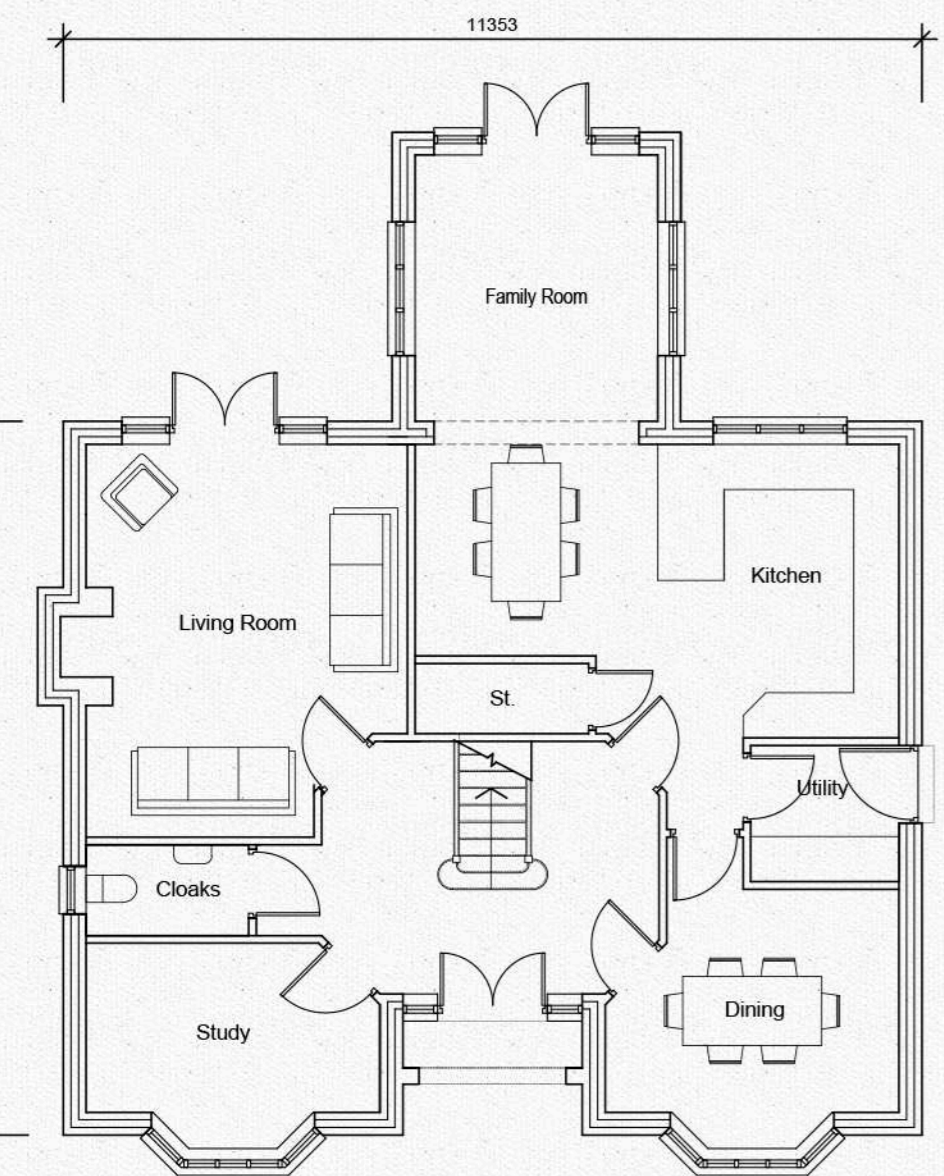
Front Elevation



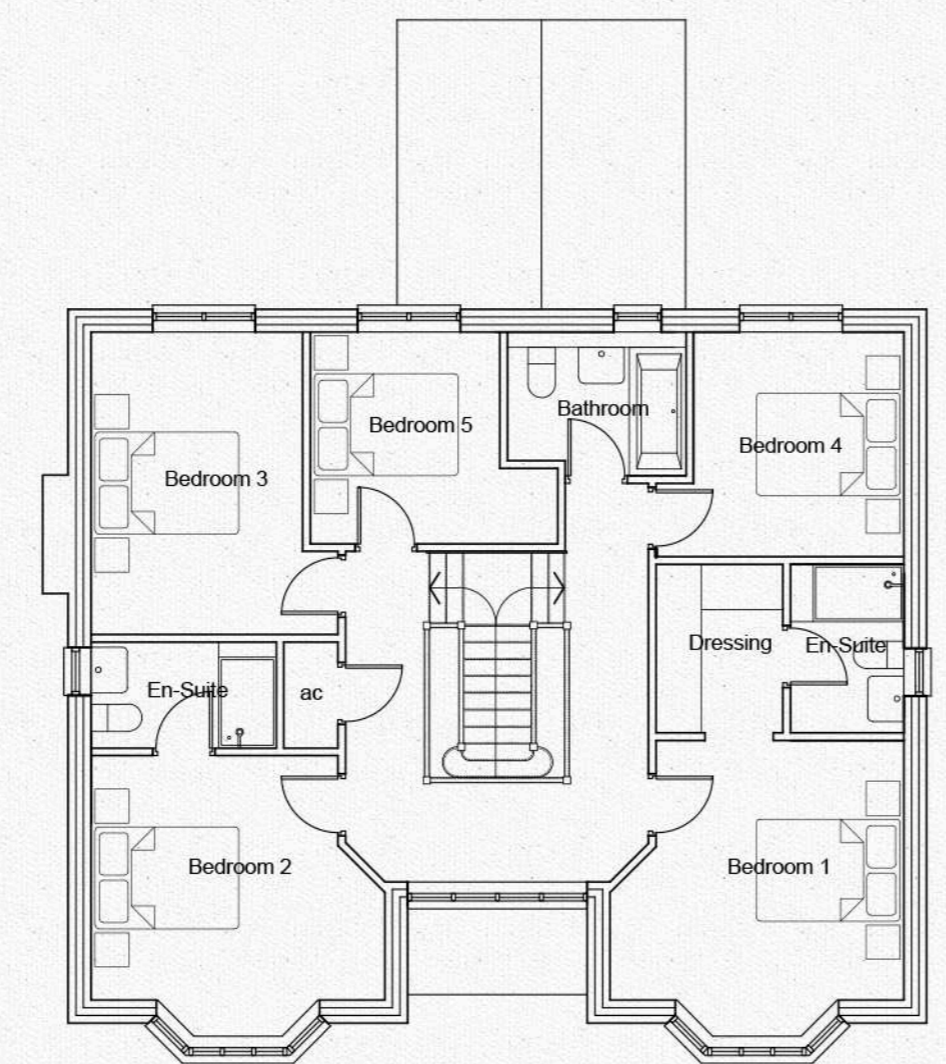
Side Elevation



Rear Elevation



Ground Floor Plan



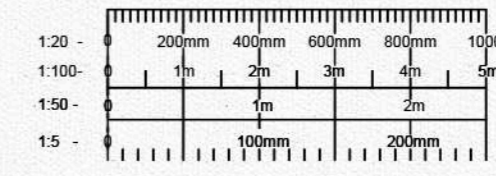
First Floor Plan



Side Elevation



FOR GUIDANCE ONLY



Rev	Details	Date	Checked By
-----	---------	------	------------

PLANNING

BROWN HILL HAYWARD BROWN
CHARTERED ARCHITECTS
GEORGIAN HOUSE 24 BIRD STREET LICHFIELD STAFFS WS13 6PT
TEL: 01543 254357 FAX: 01543 416540 e-mail: mail@hbharchitects.co.uk

Client **Barwood Homes Ltd**
Project **Broadnook Garden Suburb**

Title	Rothley Housetype				
Scale	Date	Drawn By	Checked By	Drawing Number	Revision
1:100 @ A2	Feb 16	MJM	MW	2930-122	B