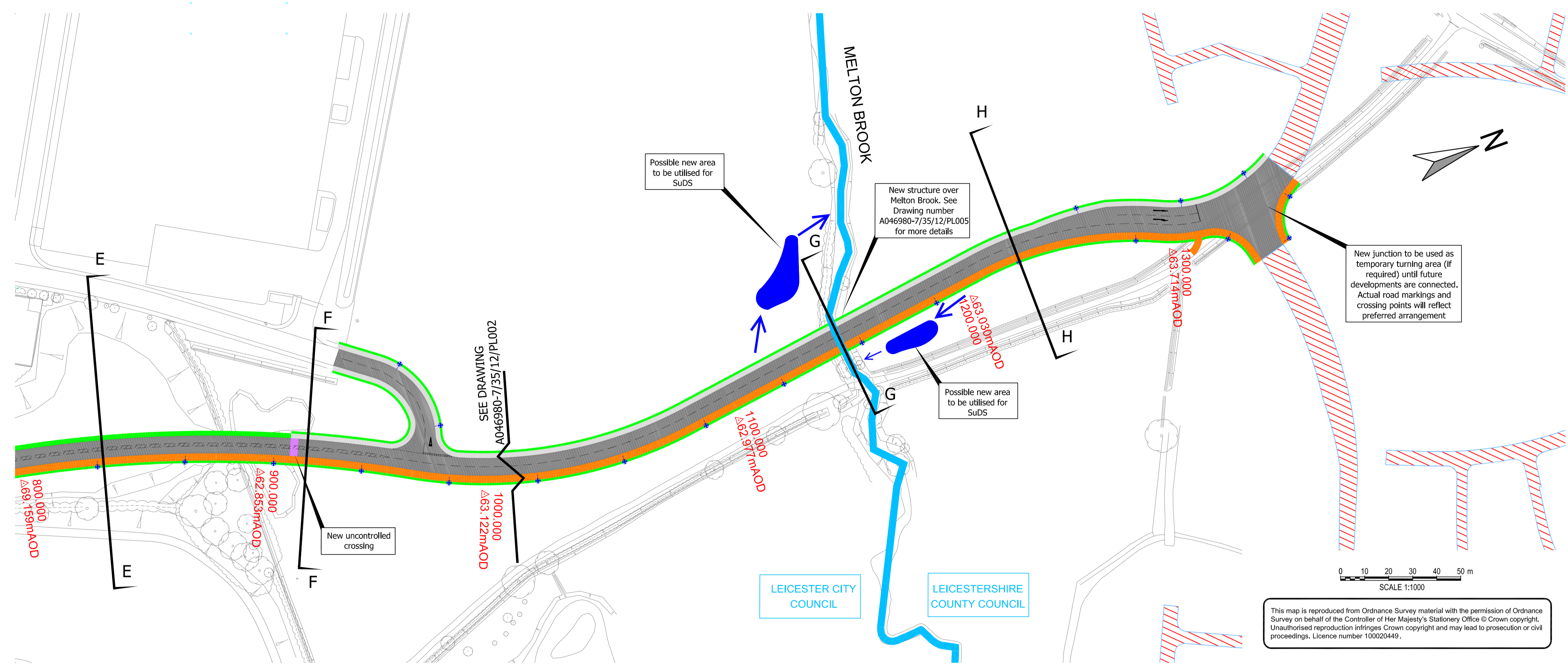


DO NOT SCALE. CONTRACTOR TO CHECK ALL DIMENSIONS AND REPORT ANY OMISSIONS OR ERRORS



- KEY**
- PROPOSED CARRIAGEWAY
 - PROPOSED FOOTWAY
 - PROPOSED COMBINED FOOTWAY / CYCLEWAY
 - CROSSINGS
 - PROPOSED VERGE
 - HIGHWAY AUTHORITY BOUNDARY
 - SPOT HEIGHT mAOD
 - PROPOSED STREET LIGHTING COLUMNS
 - AREA OF INDICATIVE DESIGN SHOWN FOR INFORMATION PURPOSES ONLY (TO FORM PART OF SUBSEQUENT PLANNING APPLICATION)
 - IMPROVEMENTS TO THE A563 ROUNDABOUT TO FORM PART OF LATER PHASES OF DEVELOPMENT

- NOTES**
- HIGHWAY TO BE DESIGNED TO 6C'S DESIGN GUIDE AT 30MPH
 - REFER TO DRAWING A046980-7/35/12/PL006 FOR INDICATIVE CROSS-SECTIONS AT LOCATION G.
 - ALTHOUGH THE HIGHWAY DRAINAGE WILL FORM PART OF THE DETAILED DESIGN IT IS ANTICIPATED THAT IT WILL BE SPLIT INTO THREE SECTIONS:
 - (CH0 - CH450) TO USE ONLINE STORAGE AND DISCHARGE WITH THE EXISTING PIPED NETWORK TO WATERSIDE ROAD.
 - (CH450 - CH1150) TO USE A SUDS SYSTEM WITH A CONTROLLED DISCHARGE INTO MELTON BROOK.
 - (CH1150 - CH1350) TO USE A SUDS SYSTEM WITH A CONTROLLED DISCHARGE INTO MELTON BROOK.

PLAN
SCALE: 1:1,000

This map is reproduced from Ordnance Survey material with the permission of Ordnance Survey on behalf of the Controller of Her Majesty's Stationery Office © Crown copyright. Unauthorised reproduction infringes Crown copyright and may lead to prosecution or civil proceedings. Licence number 100020449.

LANTERN SPECIFICATION

LANTERN DETAILS

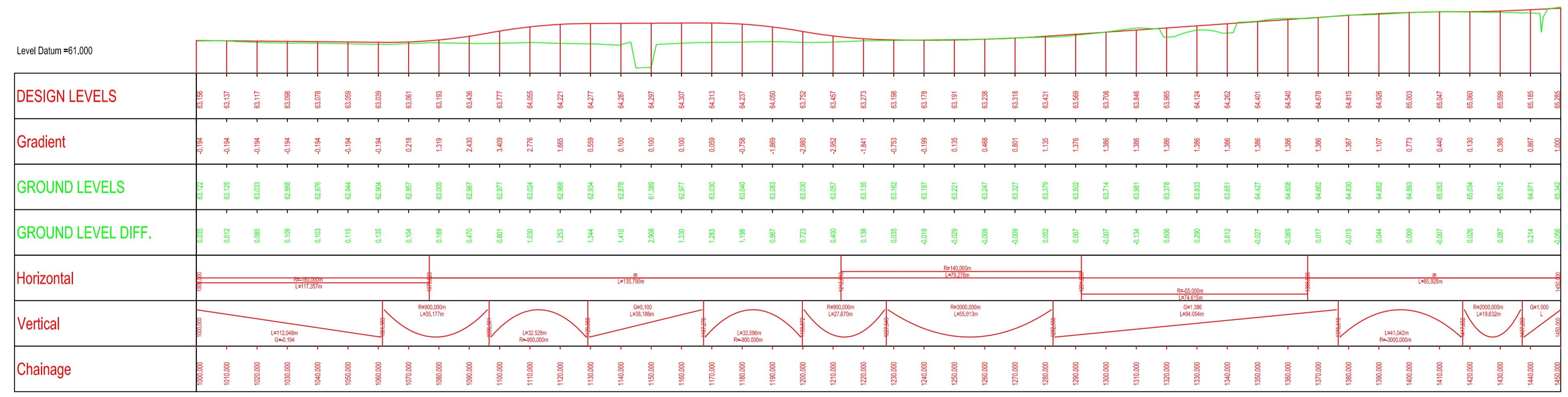
| | |
|-----------------|--|
| LANTERN TYPE | : URBIS TECED-2 LEDSAFE |
| URBIS REFERENCE | : TECO-272LED5103F9/322761 |
| COMPLETE WITH | : 2322 |
| | : INTEGRAL COVER, GRAB |
| | : OPTICAL LENS (SEE TO BEAL COMPANION) |
| | : LED OPTIC 5103 |
| | : FLAT GLASS PROTECTOR |
| | : MATHY NUMBER 322761 |

MOUNTING DETAILS

| | |
|-----------------|--------------|
| HEIGHT | : 8.0 METRES |
| BRACKET LENGTH | : POST TOP |
| INCLINATION | : 5° |
| COLUMN POSITION | : AS SHOWN |

LAMP DETAILS

| | |
|--------------------------|----------------------------|
| LAMP OUTPUT | : 12,528 LUMENS |
| MAINTENANCE FACTOR | : 0.81 |
| OPTIC LIGHTNESS RATING | : 800 LEDSAFE |
| PHOTOMETRIC DISTRIBUTION | : 220° |
| GLASSING CYCLE | : 72 MONTHS |
| REPLACEMENT PERIOD | : 25 YEARS (100,000 HOURS) |



LONGITUDINAL SECTION
SCALE: 1:1,000H & 1:200V

PLANNING SUBMISSION

| | | | | | |
|-----|---|----|-----|-----|----------|
| B | SPOT HEIGHT LEVELS ADDED, CLIENT COMMENTS AMENDED | HW | DS | DS | 11/12/13 |
| A | SECTION LINES CHANGED | PS | DS | DS | 07/08/13 |
| REV | DESCRIPTION | BY | CHK | APP | DATE |

Client: Commercial Estates Group

EXECUTIVE PARK
AVALON WAY
ANSTAY
LEICESTER
LE7 7GR
TEL: +44 (0)116 234 8000
FAX: +44 (0)116 234 8001
e-mail: leicester@wvg.com



Project: NEOL SUE
Southern Access Road

Drawing Title:
Highways Layout
Sheet 3 of 3

| | | | | | | | |
|-------------|-----------|--------|----------|-------------|----------|----------|----------|
| Scale @ | A1 | Drawn | Date | Checked | Date | Approved | Date |
| AS SHOWN | | PS | 17.07.13 | PS | 17.07.13 | PC | 17.07.13 |
| Project No. | A046980-7 | Office | Type | Drawing No. | PL003 | Revision | B |

FILENAME : \\LEICESTER\12\3501\DATA\PROJECTS\A046980-7\THURMASTON\ACAD\DWGS\A046980-35-12-PL003B.DWG | PLOTTED BY : HENRY.WOOD | PLOTTED DATE : 12 December 2013 15:51:55