



Charnwood Borough Council

Strategic Environmental Assessment Screening Report
&
Habitats Regulation Assessment Screening Report

Cossington Neighbourhood Plan 2021-2037
Regulation 16 Consultation Version (April 2023)

NOTE: Final determination made 19th October 2023 – Section 5 amended to include statutory consultee's comments and includes a 'Statement of Reasons' (Appendix A)

April 2023

1. Introduction

- 1.1 This report seeks to determine whether the Cossington Neighbourhood Plan is likely to have significant environmental effects and will require a strategic environmental assessment (SEA). It will also assess the likelihood of the proposals within the Plan having an adverse impact upon internationally designated wildlife sites, as required by the European Habitats Directive.
- 1.2 Strategic Environmental Assessment and Sustainability Assessment requirements are prescribed by the European Directive 2001/42/EC. The requirements have been introduced into the planning system by the Environmental Assessment of Plans and Programmes Regulations 2004 (SEA Regulations).
- 1.3 As regards the Habitats Regulations, Schedule 2 of the Neighbourhood Planning (General) Regulations 2012 requires, as a basic condition, that the making of a neighbourhood plan is not likely to have a significant effect upon a European site.

2. Cossington Neighbourhood Plan

- 2.1 The Cossington Neighbourhood Plan 2021 – 2037 Submission Version (January 2023) has been produced by Cossington Parish Council.
- 2.2 The entire parish of Cossington was designated as the neighbourhood area to be covered by the plan on 24th February 2020. The Qualifying Body has requested that Charnwood Borough Council undertake a Strategic Environmental Assessment screening and Habitats Regulations assessment prior to the Regulation 16 consultation.
- 2.3 The plan contains the following policies:
 - H1 – Residential Site Allocation
 - H1 – Settlement Boundary
 - H2 – Housing Mix
 - H3 – Affordable Housing
 - H4 – Windfall Sites
 - H5 – Housing Design
 - ENV1 – Local Green Space
 - ENV2 – Important Open Spaces
 - ENV3 – Sites and Features of Natural Environmental Significance
 - ENV4 – Woodland Notable Trees and Hedges
 - ENV5 – Biodiversity and Habitat Connectivity
 - ENV6 – Sites of Historic Environment Significance
 - ENV7 – Local Heritage Assets
 - ENV8 – Ridge and Furrow
 - ENV9 – Important Views
 - ENV10 – Footpaths and Other Walking Routes
 - ENV11 – Renewable Energy Generation Infrastructure
 - CF1 – Retention of Community Facilities, Amenities and Assets
 - CF2 – New or Improved Community Facilities
 - PC1 – Broadband and Mobile Infrastructure
 - T1 – Transport and Road Safety

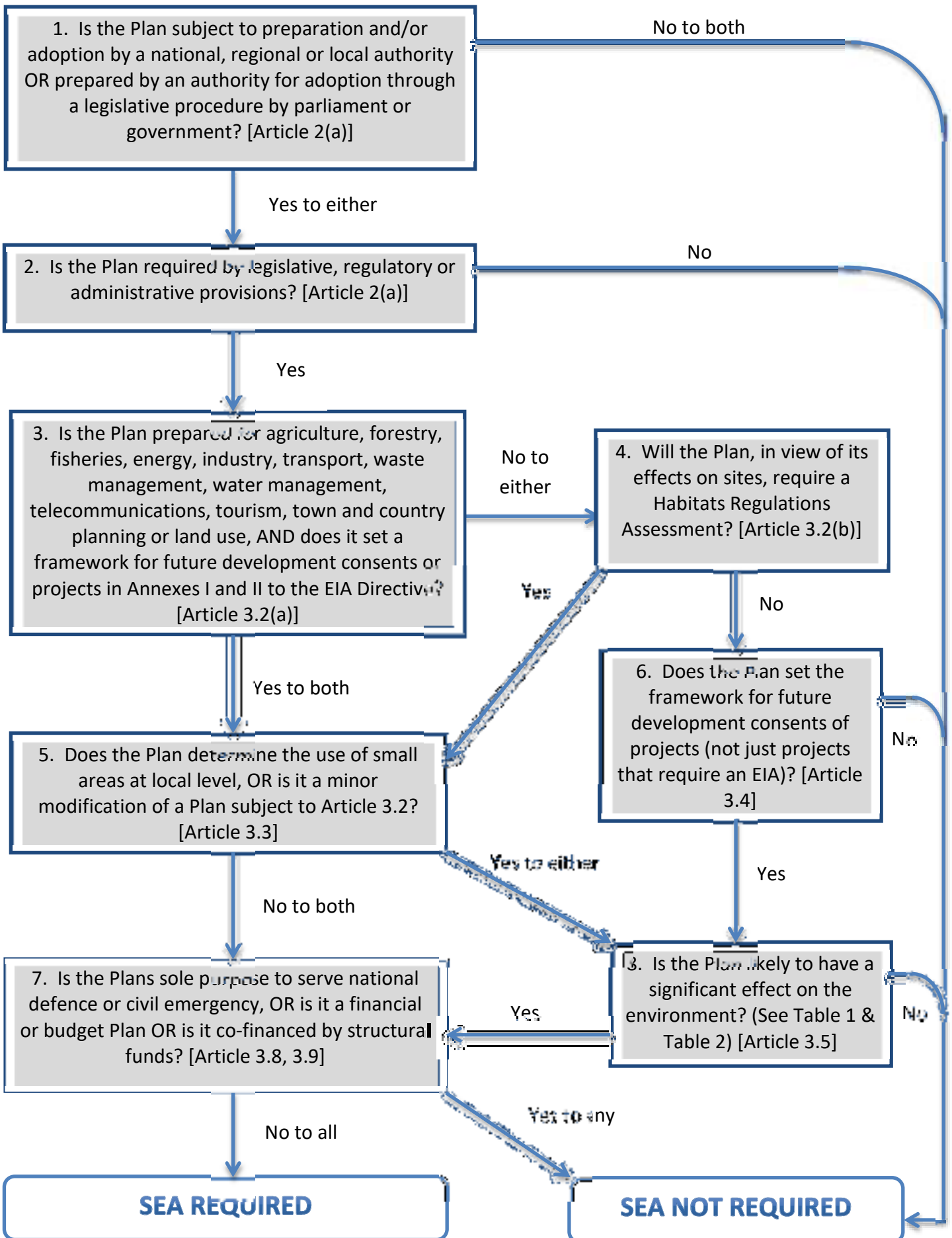
- T2 – Pedestrian Footpaths, Pavements and Cycle Ways
- BE1 – Support for Existing Businesses & Employment Opportunities
- BE2 – Support for New Business and Employment
- BE3 – Farm Diversification
- BE4 – Tourism

3. Strategic Environmental Assessment

- 3.1 The SEA Directive aims to ensure a high level of protection for the environment and to integrate environmental considerations into the preparation of plans. The Directive seeks to promote sustainable development by ensuring that an SEA is undertaken for any plans which may have a significant effect on the environment.
- 3.2 To establish if a plan needs to be accompanied by a full SEA, a “screening” assessment is undertaken against a series of criteria set out in the SEA Directive. The screening process and how a plan can be assessed against the SEA Directive criteria are shown in **Figure 1**.

Figure 1

Application of criteria of the SEA Directive to Plans



3.3 The assessment provided in Table 1, below, has provided answers to the questions posed in the flow diagram in Figure 1. If the steps shown in Figure 1 are followed then the requirement for an SEA can be determined.

Table 1: Assessment of the characteristics of the Cossington Neighbourhood Plan

	Assessment Criteria	Y/N	Assessment
1	Is the Neighbourhood Plan subject to preparation and/or adoption by a national, regional or local authority OR prepared by an authority for adoption through a legislative procedure by Parliament or Government? (Art. 2(a))	Y	The preparation and adoption of the Neighbourhood Plan is provided for by The Town and Country Planning Act 1990, (as amended by the Localism Act 2011) and the Neighbourhood Planning Act 2017. The draft Neighbourhood Plan has been prepared by Cossington Parish Council (as the relevant body) and will be made by Charnwood Borough Council as the local authority. The preparation of Neighbourhood Plans is subject to the following regulations as amended: i. The Neighbourhood Planning (General) Regulations 2012, and, ii. The Neighbourhood Planning (referendums) Regulations 2012.
2	Is the Neighbourhood Plan required by legislative, regulatory or administrative provisions? (Art. 2(a))	Y	Preparing a Neighbourhood Plan is optional as there are no legislative, regulatory or administrative provisions that require them. However, if “made” it will form part of the development plan for the Borough and must meet statutory requirements. It is therefore considered necessary to continue the screening process to determine if a SEA is required under the Directive. On that basis, a Yes answer is provided to the question.
3	Is the Neighbourhood Plan prepared for agriculture, forestry, fisheries, energy, industry, transport, waste management, water management, telecommunications, tourism, town and country planning or land use, AND does it set a framework	Y	The Neighbourhood Plan is primarily prepared for town and country planning/ land use purposes, and proposes policies cover themes including housing, design, the natural and historical environment, protected spaces and community facilities. The Neighbourhood Plan will form part of the Development Plan (i.e. the framework) for the neighbourhood area and therefore could potentially, alongside other policies in the Development Plan, influence development consent for

Assessment Criteria	Y/N	Assessment
for future development consent of projects in Annexes I and II ¹ to the EIA Directive? (Art. 3.2(a))		several of the projects listed in Annexes I and II of the EIA Directive. The neighbourhood plan proposes to allocate land for development and, if adopted, would establish the principle of development of that land.
4 Will the Neighbourhood Plan, in view of its likely effect on sites, require an assessment for future development under Article 6 or 7 of the Habitats Directive? (Art 3.2(a))	N	<p>The Neighbourhood Plan is unlikely to have a significant effect upon any European (Natura 2000) site. A Habitats Regulations Assessment (HRA) Screening Report² was undertaken as part of the Charnwood Local Plan 2011 to 2028 Core Strategy preparation process. The final report, published in March 2013, concluded that the Core Strategy <i>“is not likely to have a significant effect upon any European site, including River Mease SAC and Rutland Water SPA/Ramsar site, either alone or in combination with other plans or projects, and therefore an Appropriate Assessment is not required.”</i></p> <p>Charnwood Borough does contain any European sites within its boundaries; however, two sites are examined further in the HRA Screening Report; the River Mease SAC lies to the west of the Borough and the Rutland Water SPA and Ramsar site lies to the east.</p> <p>The HRA Screening Report found the Core Strategy unlikely to have a significant effect upon these sites due to:</p> <ul style="list-style-type: none"> i) A lack of pathway for effects arising from development in Charnwood to reach and affect the River Mease SAC; and

¹ https://ec.europa.eu/environment/eia/pdf/cover_2015_en.pdf

² https://www.charnwood.gov.uk/files/documents/sd10_draft_charnwood_core_strategy_habitats_regulations_assessment_screening_record_2013/SD-10+-Draft+Charnwood+Core+Strategy+-+Habitat+Regulations+Assessment+Screening+Record+%282013%29.pdf

	Assessment Criteria	Y/N	Assessment
			<p>ii) The level of management measures implemented by Leicestershire and Rutland Wildlife Trust in partnership with Anglian Water for the Rutland Water SPA/Ramsar site.</p> <p>Considering the above findings, and that the Cossington Neighbourhood Plan only seeks to allocate a small area of land for development and includes generally protective policies, it is concluded that the Neighbourhood Plan would not affect any European site Report undertaken in 2013 for the Core Strategy. Therefore, it is considered that an Appropriate Assessment is not required.</p>
5	Does the Neighbourhood Plan determine the use of small areas at local level, OR is it a minor modification of a Plan subject to Art. 3.2? (Art. 3.3)	Y	The Neighbourhood Plan proposes to allocate land for development. The policies and protective designations that it contains will be used to determine planning applications within the neighbourhood area and will therefore influence development principles at a local level.
6	Does the Neighbourhood Plan set the framework for future development consent of projects (not just in annexes to the EIA Directive)? (Art. 3.4)	Y	The Neighbourhood Plan proposes to allocate land for development. The policies and protective designations that it contains will, if adopted, form part of the development plan for the neighbourhood area and will therefore form part of the framework (alongside the Local Plan) used to determine planning applications.
7	Is the Neighbourhood Plan's sole purpose to serve the national defence or civil emergency, OR is it a financial or budget Plan OR is it co-financed by structural funds or EAGGF programmes 2000 to 2006/7? (Art. 3.8, 3.9)	N	The Neighbourhood Plan does not have a sole purpose which falls within any of these categories.

	Assessment Criteria	Y/N	Assessment
8	Is it likely to have a significant effect on the environment? (Art. 3.5)	N	<p>The Cossington Neighbourhood Plan will be applicable only within the boundary of Cossington Parish Council as confirmed by the neighbourhood area designation.</p> <p>The policies of the draft Neighbourhood Plan seek to:</p> <ul style="list-style-type: none"> • Establish development principles to establish the acceptability of the location of future development, including a small housing site allocation, area of local separation and limits to development. • Establish principles to protect existing employment sites and support new employment opportunities subject to criteria. • Includes protective and proactive environmental policies including designated protected local green spaces and open spaces, protecting biodiversity sites and trees, protecting heritage assets and protecting landscape views. • Other policies are unlikely to have a significant environmental effects as they relate to site specific matters such as design, community facilities, and transport or they include criteria that are broadly consistent with the existing national policy approach.

3.4 Figure 1 sets out that where the answer to 5 or 6 is 'Yes', an assessment of the likely significant effects on the environment should be made. See Table 2 for this assessment.

Table 2: The Environmental Assessment of Plans and Programmes Regulations 2004 Schedule 1 – Criteria for Determining the Likely Significance of Effects on the Environment

Significant effect criteria	Assessment
<p>1. The characteristics of the plans, having regard to:</p>	
<p>1a. the degree to which the plan sets a framework for projects and other activities, either with regard to the location, nature, size and operating conditions or by allocating resources;</p>	<p>The Neighbourhood Plan, if made, would form part of the statutory development plan; therefore, it would contribute to the future development consent of projects. However, the Neighbourhood Plan sits within a wider framework set by the National Planning Policy Framework (NPPF) and the adopted Charnwood Local Plan. The Neighbourhood Plan helps to set a framework for projects which are local in nature and must conform to the wider framework set at a strategic level.</p> <p>No likely significant environmental effect.</p>
<p>1b. the degree to which the plan influences other plans and programmes including those in a hierarchy;</p>	<p>The Neighbourhood Plan is required to be in conformity with the NPPF and the strategic policies in the adopted Local Plan. The Neighbourhood Plan therefore has a lower hierarchical position in relation to the rest of the Development Plan and seeks to respond to, rather than influence these. Additionally, neighbourhood plan policies only have impact within the designated neighbourhood area.</p> <p>No likely significant environmental effect.</p>
<p>1c. the relevance of the plan for the integration of environmental considerations, in particular with a view to promoting sustainable development;</p>	<p>The Neighbourhood Plan has been drafted in accordance with the principles of sustainable development set out in the NPPF. The Neighbourhood Plan contains policies on a multitude of policy areas, the main environmental impacts of which are detailed in Table 1. Neighbourhood Plan policies are required to be in conformity with national and local policies as required by the legally defined 'Basic Conditions'. The Neighbourhood Plan is also required to contribute to the achievement of sustainable development to enable it to be approved at examination and "made" by the Borough Council. Development would also be subject to the policies in the Charnwood Local Plan; therefore, all environmental considerations will be taken into account.</p>

Significant effect criteria	Assessment
	<p>The plan includes positive policies for the promotion of sustainable development and the social, environmental and economic objectives of the plan, which inform the policy content, are set out in page 10 of the plan.</p> <p>No likely significant environmental effect.</p>
<p>1d. environmental problems relevant to the plan; and</p>	<p>The neighbourhood plan area contains no SSSI's and approximately 5 Local Wildlife Sites (see mapping https://webmap.charnwood.gov.uk/CharnwoodWebMap/).</p> <p>The neighbourhood plan sets out protective policies including a specified policies to conserve and enhance biodiversity and heritage assets; protective local green space and open space designations, protective landscape view designations and to mitigate flood risk.</p> <p>No likely significant environmental effect.</p>
<p>1e. the relevance of the plan for the implementation of Community legislation on the environment (e.g. plans linked to waste-management or water protection).</p>	<p>The Neighbourhood Plan will have to comply with national and local planning policies and European legislation in order to meet the 'Basic Conditions'. The Neighbourhood Plan has to be in conformity with the Charnwood Local Plan Core Strategy, which has had regard to European Community legislation on the environment.</p> <p>No likely significant environmental effect.</p>
<p>2. Characteristics of the effects and of the area likely to be affected, having regard, in particular, to:</p>	
<p>2a. the probability, duration, frequency and reversibility of the effects;</p>	<p>The neighbourhood plan has a proposed plan period up to 2037 and includes a commitment to monitor and review the plan. If it considered in the future that the plan does have negative effects, provisions are included in the legislation that makes it possible to revoke a neighbourhood plan.</p> <p>The policies in the neighbourhood plan, as set out in a section 1d, are generally protective. The development plan, including the neighbourhood plan and the local plan, is read in its entirety and therefore matters not covered by the neighbourhood plan are likely to be covered elsewhere in the development plan. This provides adequate control in terms of reversibility.</p>

Significant effect criteria	Assessment
2b. the cumulative nature of the effects;	<p>No likely significant environmental effect.</p> <p>The cumulative effects of the neighbourhood plan which may occur will be limited. The plan proposes a single small housing allocation and otherwise includes generally protective planning policies as set out in section 1d. If it is found to be the case that unanticipated negative cumulative effect result from the plan, there is scope for reversibility as set out in section 2a.</p> <p>No likely significant environmental effect.</p>
2c. the transboundary nature of the effects;	<p>All effects of the neighbourhood plan will be local in nature as the policies are only applicable to the neighbourhood area. The policies of the plan are generally protective in nature and will therefore reduce the scope for any limited impact upon surrounding parishes. The plan has a single housing site allocation which is not proximal to the parish boundary.</p> <p>No likely significant environmental effect.</p>
2d. the risks to human health or the environment (e.g. due to accidents);	<p>There are no significant risks to human health or the environment. The Plan may improve human health by protecting areas which are important to the local community for recreation, along with supporting the provision of suitable homes to meet local needs.</p> <p>No likely significant environmental effect.</p>
2e. the magnitude and spatial extent of the effects (geographical area and size of the population likely to be affected);	<p>The Neighbourhood Plan relates to the parish of Cossington and generally aims to concentrate development within the defined limits to development. The plan includes generally protective policies, and therefore the magnitude and spatial extent of the effects are likely to be small.</p> <p>No likely significant environmental effect.</p>
2f. the value and vulnerability of the area likely to be affected due to: <ol style="list-style-type: none"> 1. special natural characteristics or cultural heritage; 2. exceeded environmental quality standards or limit values; 	<ol style="list-style-type: none"> 1. As set out in the assessment for criteria 1c and 1d in this table, the neighbourhood plan seeks to address the three tiers of sustainable development which includes policies that will seek to enhance the natural environment and cultural heritage of the area. 2. The neighbourhood plan sets out several policies to exceed environmental quality standards, including support for enhanced design, biodiversity provision, and the protection of green spaces.

Significant effect criteria	Assessment
3. intensive land-use; and	<p>3. As set out in the assessment for criteria 2e, the neighbourhood plan generally aims to concentrate development within the defined limits to development. More intensive land use is therefore intended to be concentrated in areas that are already intensely developed relative to the surrounding countryside.</p> <p>No likely significant environmental effect.</p>
2g. the effects on areas or landscapes which have a recognised national, Community or international protection status.	<p>Cossington Parish does not contain a statutory landscape designation at national level. Cossington Parish is within the Soar Valley character area as identified in the Charnwood Landscape Character Assessment (2012) (guidelines at pages 47-57 of the assessment). The neighbourhood plan includes generally protective policies including the identification of important views.</p> <p>No likely significant environmental effect.</p>

- 3.5 Following the flow diagram in Figure 1, with the assessment made in Tables 1 and 2, this Screening Report concludes that a full Strategic Environmental Assessment is not required. No significant environmental effects are likely to arise from the Cossington Neighbourhood Plan Pre Submission Version (February 2022).
- 3.6 A subsequent addendum to this screening report will only be required should any significant changes be proposed to the neighbourhood plan.
- 3.7 The views of the relevant consultation bodies (Historic England, Natural England and the Environment Agency) have been received and are included in Section 5 of this document.

4. Habitats Regulations Assessment

- 4.1 Alongside the SEA screening process there is also a need to assess whether the Neighbourhood Plan would have an adverse impact upon internationally designated wildlife sites, as required by the European Habitats Directive.
- 4.2 The Charnwood Local Plan 2011 to 2028 Core Strategy was accompanied by a Habitats Regulations Assessment (HRA) Screening Report³ to examine whether the plan would have a significant effect upon any European (Natura 2000) site. The final report, published in March 2013, concluded that the Core Strategy *“is not likely to have a significant effect upon any European site, including River Mease SAC and Rutland Water SPA/Ramsar site, either alone or in combination with other plans or projects, and therefore an Appropriate Assessment is not required.”*
- 4.3 There are no European sites within the boundaries of Charnwood Borough; however, the Screening Report did examine the River Mease SAC, which lies to the west of the Borough, and the Rutland Water SPA and Ramsar site, which lies to the east.
- 4.4 The HRA Screening Report considered that the Core Strategy would be unlikely to have a significant effect upon these sites due to:
- i) A lack of pathway for effects arising from development in Charnwood to reach and affect the River Mease SAC; and
 - ii) The level of management measures implemented by Leicestershire and Rutland Wildlife Trust in partnership with Anglian Water for the Rutland Water SPA/Ramsar site.
- 4.5 The HRA Screening Report concluded that, either alone or in combination with other plans or projects, the Core Strategy is not likely to have a significant effect upon any European site.

³https://www.charnwood.gov.uk/files/documents/sd10_draft_charnwood_core_strategy_habitats_regulations_assessment_screening_record_2013/SD-10+-+Draft+Charnwood+Core+Strategy+-+Habitat+Regulations+Assessment+Screening+Record+%282013%29.pdf

4.6 This report also considers Chapter 8 of Part 6 of the Conservation of Habitats and Species Regulations 2017⁴, as required by the Basic Conditions, and responds to regulation 105 (1-6) below:

- (1) – This report concludes that there no requirement for a full SEA/HRA in relation to the Cossington Neighbourhood Plan.
- (2) – Responses of the statutory consultees are provided in Section 5 of this report.
- (3) – This report will form part of the suite of consultation documents as part of Charnwood Borough Council’s Regulation 16 consultation.
- (4) – It is anticipated, subject to the responses of the statutory consultees in Section 5 of this report, that Regulation 107 does not apply as the neighbourhood plan is considered to have no likely significant effects on sites applicable to HRA.
- (5) – This report will be the subject of consultation with the general public and statutory consultees.
- (6) – The Screening report has determined that the neighbourhood plan will not impact any sites applicable to HRA.

4.7 To conclude, the Neighbourhood Plan is required to be in conformity with the Core Strategy. Given this requirement and the limited scale of development proposed in the Neighbourhood Plan, it is not considered that the Neighbourhood Plan will further affect any European site in addition to the impacts identified in the HRA Screening Report undertaken in 2013 for the Core Strategy. This screening report meets the basic condition as per paragraph 4.6 Therefore, it is considered that an Appropriate Assessment is not required.

4.8 The views of the relevant consultation bodies (Historic England, Natural England and the Environment Agency) were sought and Section 5 of this document includes their comments.

5. Conclusion

5.1 The Environment Agency, Natural England and Historic England were consulted on the SEA screening on 30 January 2023 as required by legislation and the following responses were received:

Consultee	Response
Environment Agency	<p>From: Wakefield, Nick <nick.wakefield@environment-agency.gov.uk> Sent: Friday, March 10, 2023 11:23 AM To: Emma Crowe <clerk@cossingtonparishcouncil.gov.uk> Cc: EMDenquiries <EMDenquiries@environment-agency.gov.uk> Subject: FW: FEMD-301653, SP, Due back ASAP Importance: High</p>

⁴ <https://www.legislation.gov.uk/ukxi/2017/1012/part/6/chapter/8/made>

Consultee	Response
	<p>Dear Emma,</p> <p>Thank you for your email dated 30 January 2023 and which has been forwarded to myself.</p> <p>Whilst the Environment Agency does not have statutory role to play in the SEA screening process I am able to confirm that in our discretionary opinion an SEA would not be required for the Cossington Neighbourhood Plan.</p> <p>Thank you Regards Nick</p>
<p>Natural England</p>	<p>Dear Emma,</p> <p>Planning consultation: Cossington Neighbourhood Plan – SEA and HRA Screening Assessment</p> <p>Thank you for your consultation on the above dated 30 January 2023.</p> <p>Natural England is a non-departmental public body. Our statutory purpose is to ensure that the natural environment is conserved, enhanced, and managed for the benefit of present and future generations, thereby contributing to sustainable development.</p> <p>Natural England welcomes the Screening Report which assesses the requirement for Strategic Environmental Assessment (SEA) and Habitats Regulations Assessment (HRA) for the Cossington Neighbourhood Plan.</p> <p>I can confirm that Natural England agrees with this report's conclusion that it is not likely there will be significant environmental effects arising from the policies in the plan, which have not already been accounted for within the adopted local plan. Therefore, the Cossington Neighbourhood Plan does not require a Strategic Environmental Assessment (SEA) to be undertaken.</p> <p>Natural England also agrees that the Plan would be unlikely to result in any significant effect to European Sites, either alone or in combination, and therefore an appropriate assessment under the Habitats Regulations is not required.</p> <p>Aside from this, Natural England has no specific comments at this stage. We would be happy to comment further should the need arise but if in the meantime you have any queries please do not hesitate to contact us. For any queries relating to the specific advice in this letter please contact me on 02080268500. For any new consultations, or to provide further information on this</p>

Consultee	Response
	<p>consultation please send your correspondences to consultations@naturalengland.org.uk.</p> <p>Yours sincerely Roslyn Deeming Senior Planning Adviser East Midlands</p>
<p>Historic England</p>	<p>Dear Mr Wilkins,</p> <p>I am writing in relation to the following:</p> <p>SEA/SA/IIA: Strategic Environmental Assessment/ Sustainability Appraisal/ Integrated Impact Assessment Cossington Neighbourhood Plan [Case Ref. PL00792702; HE File Ref. N/A; Your Reference. N/A]</p> <p>Please see our included advice for your plan.</p> <p>Yours Sincerely Ehssen Mahmood Chaudhry on behalf of Clive Fletcher Business Officer E-mail: Ehssen.MahmoodChaudhry@historicengland.org.uk</p> <p>Attachment:</p> <p>Dear Mr Wilkins,</p> <p>Neighbourhood Plan for Cossington Neighbourhood Plan</p> <p>Thank you for consulting Historic England about your Neighbourhood Plan.</p> <p>The area covered by your Neighbourhood Plan includes a number of important designated heritage assets. In line with national planning policy, it will be important that the strategy for this area safeguards those elements which contribute to the significance of these assets so that they can be enjoyed by future generations of the area.</p> <p>If you have not already done so, we would recommend that you speak to the planning and conservation team at your local planning authority together with the staff at the county council archaeological advisory service who look after the Historic Environment Record. They should be able to provide details of the designated heritage assets in the area together with locally-important buildings, archaeological remains and landscapes. Some Historic Environment Records may also be available on-line via the</p>

Consultee	Response
	<p data-bbox="451 237 1398 376">Heritage Gateway (www.heritagegateway.org.uk <http://www.heritagegateway.org.uk>). It may also be useful to involve local voluntary groups such as the local Civic Society or local historic groups in the production of your Neighbourhood Plan.</p> <p data-bbox="451 421 1398 560">Historic England has produced advice which your community might find helpful in helping to identify what it is about your area which makes it distinctive and how you might go about ensuring that the character of the area is retained. These can be found at:</p> <p data-bbox="451 604 1177 674">https://historicengland.org.uk/advice/planning/plan-making/improve-your-neighbourhood/</p> <p data-bbox="451 712 1398 925">You may also find the advice in “Planning for the Environment at the Neighbourhood Level” useful. This has been produced by Historic England, Natural England, the Environment Agency and the Forestry Commission. As well as giving ideas on how you might improve your local environment, it also contains some useful further sources of information. This can be downloaded from:</p> <p data-bbox="451 969 1398 1039">http://webarchive.nationalarchives.gov.uk/20140328084622/http://cdn.environment-agency.gov.uk/LIT_6524_7da381.pdf</p> <p data-bbox="451 1077 1398 1330">If you envisage including new housing allocations in your plan, we refer you to our published advice available on our website, “Housing Allocations in Local Plans” as this relates equally to neighbourhood planning. This can be found at https://content.historicengland.org.uk/images-books/publications/historic-environment-and-site-allocations-in-local-plans/heag074-he-and-site-allocation-local-plans.pdf</p> <p data-bbox="451 1368 1398 1438">If you have any queries about this matter or would like to discuss anything further, please do not hesitate to contact me.</p> <p data-bbox="451 1480 683 1550">Yours sincerely, C. Fletcher</p> <p data-bbox="451 1592 991 1700">Clive Fletcher Principal Adviser, Historic Places clive.fletcher@HistoricEngland.org.uk</p> <p data-bbox="451 1738 1182 1771">Follow-up email from Charnwood Borough Council:</p>

Consultee	Response
	<p>Hi Ehssen,</p> <p>Thank you for your response. Can you confirm that the correct comments have been submitted, and relate to the SEA Screening, as typically a standard response is provided referencing the organisation's position with respect to the requirement of an SEA.</p> <p>Kind Regards, Seb Wilkins Senior Planning Officer (Local Plans)</p> <p>Response from Historic England:</p> <p>Good afternoon Mr Wilkins.</p> <p>Thank you for your email. I can confirm that the correct response was sent: our Principal Advisor, Clive, advised that the housing allocations associated with your plan are uncontentious and so a standard response would be suitable. However, if you feel that you require additional comments regarding your plan/SEA request, do please get back in touch with me or contact Clive as he handled this case: Clive.Fletcher@HistoricEngland.org.uk</p> <p>I hope that this will be of help to you.</p> <p>Best wishes, Ehssen</p>

5.2 Given the consultation responses, this SEA/ HRA screening report has determined that there is no requirement for a full Strategic Environmental Assessment or Habitats Regulations Assessment on the regulation 16 version of the plan, therefore no further screening is required.

5.3 Following the consultation, a statement of reasons is attached as Appendix A and has been sent to the above consultees in accordance with the regulations⁵.

⁵ <https://www.legislation.gov.uk/ukxi/2004/1633/regulation/11/made>

Appendix A – Statement of Reasons



Cossington Parish Neighbourhood Plan - Published 19th October 2023

STRATEGIC ENVIRONMENTAL ASSESSMENT (SEA) SCREENING DETERMINATION UNDER THE ENVIRONMENTAL ASSESSMENT OF PLANS AND PROGRAMMES REGULATIONS 2004

Charnwood Borough Council undertook a Strategic Environmental Assessment (SEA) Screening (April 2023) to determine the requirement for SEA for the Submission Cossington Parish Neighbourhood Plan.

The relevant statutory bodies (The Environment Agency, Natural England and Historic England) were consulted on the SEA Screening Report as part of the Regulation 16 consultation and no specific comments were made. Following this consultation, the Submission Cossington Parish Neighbourhood Plan was examined by an independent examiner who concluded at paragraph 44 of his report that the SEA was legally compliant and the Neighbourhood Plan compatible with European regulations. The examiner recommended several changes to the Plan none of which allocate additional land for development or proposed a significant change in policy approach.

Following consultation with the relevant statutory bodies and considering the examiner's recommendations, Charnwood Borough Council has determined that a SEA of the Cossington Parish Neighbourhood Plan is not required as it is not likely to have significant environmental effects. As such, it is the opinion of Charnwood Borough Council that the Cossington Parish Neighbourhood Plan is in accordance with the provisions of European Directive 2001/42/EC as incorporated into United Kingdom law by the Environmental Assessment of Plans and Programmes Regulations 2004. The reasons for this decision are:

Statement of Reasons

- The Neighbourhood Plan has been written to be in general conformity with the Charnwood Local Plan Core Strategy 2011-2028 and emerging draft local plan. The environmental credentials of the Core Strategy have been assessed through reports such as Sustainability Appraisal and Habitats Regulations Assessment. The Neighbourhood Plan does not alter the development strategy set out in the Core Strategy or emerging draft local plan.
- The policies in the Plan are considered to have a generally neutral/ positive environmental impact at a local level, particularly through the inclusion of local design considerations or protective designations.

- The analysis undertaken in the Cossington Parish Neighbourhood Plan SEA Screening Report (April 2023) supports the conclusion that a SEA is not required and this has been confirmed through consultation with the statutory consultees.
- The examiner's recommendations did not significantly alter the policies of the plan or allocate additional land for development.

A copy of the SEA Screening Report is available for inspection:

- Online - [Cossington Neighbourhood Plan - Charnwood Borough Council](#)
- At the Council Offices, Southfield Road, Loughborough (email localplans@charnwood.gov.uk to arrange this)